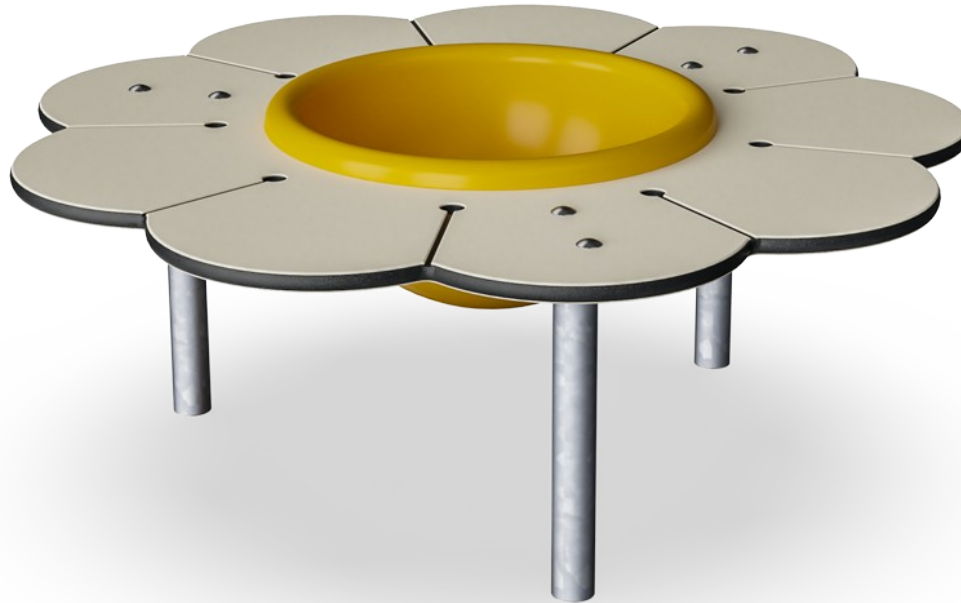


# Daisy Desk with Bowl

M26003



Item no. M26003-3418P

## General Product Information

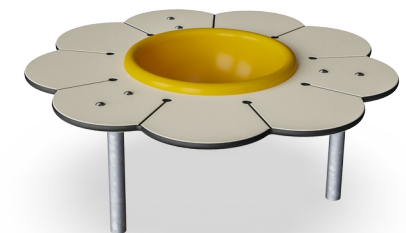
Dimensions LxWxH	99x99x38 cm
Age group	6m+
Play capacity (users)	3
Colour options	



The Daisy Desk with bowl immediately attracts and welcomes infants and toddlers with its age appropriate size and cute floral theme. The desk provides an ergonomically perfect place to work with loose parts or creative materials, together with friends or care givers. The yellow bowl is a perfect container for materials. It can be lifted and emptied, a favourite activity for

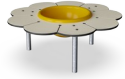
young children. The Daisy Desk with Bowl encourages social play: the roundings of the desk each welcome a player. The round shape encourages eye contact and thus cooperation and conversation. The budding social skills in infants are stimulated by the fact that they can see all the other children thanks to the round shape of the Daisy Desk. The Daisy Desk with

Bowl offers toddlers an opportunity to break out from the wilder action in playgrounds.



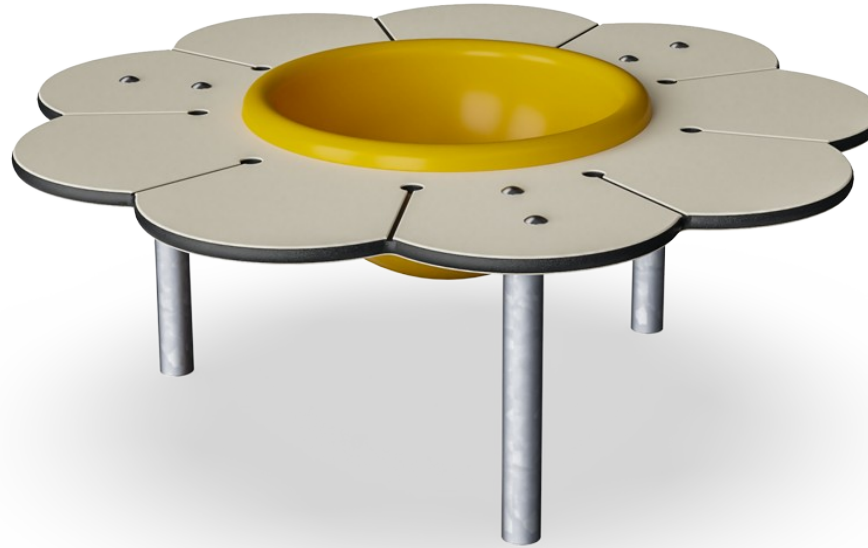
# Daisy Desk with Bowl

M26003



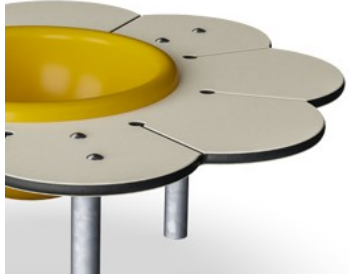
## Splash basin

**Social-Emotional:** meeting point for cooperation and sharing. **Cognitive:** construction play storage – playing with sand here promotes thinking skills.



# Daisy Desk with Bowl

M26003



Panels of 19mm EcoCore™. EcoCore™ is a highly durable, eco friendly material, which is not only recyclable after use, but also consists of material produced from +95% recycled post consumer material from food packing waste.



Sand basin is made of Polycarbonate (PC). Basin is moulded in one piece to ensure high durability in all climates around the world.



The steel surfaces are hot dip galvanised inside and outside with lead free zinc. The galvanisation has excellent corrosion resistance in outside environments and requires low maintenance.

Item no. M26003-3418P

## Installation Information

Max. fall height	0 cm
Safety surfacing area	12.5 m <sup>2</sup>
Total installation time	1.8
Excavation volume	0.10 m <sup>3</sup>
Concrete volume	0.00 m <sup>3</sup>
Footing depth (standard)	64 cm
Shipment weight	28 kg
Anchoring options	In-ground ✓ Surface ✓

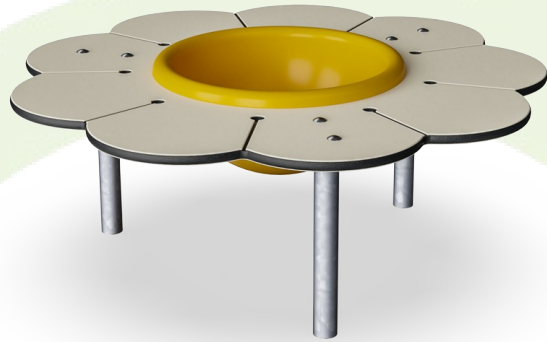
## Warranty Information

EcoCore HDPE	Lifetime
Hot dip galvanised steel	Lifetime
Spare parts guaranteed	10 years



# Sustainability Data

M26003



Cradle to Gate A1-A3	Total CO <sub>2</sub> emission	CO <sub>2</sub> e/kg	Recycled materials
	kg CO <sub>2</sub> e	kg CO <sub>2</sub> e/kg	%
<b>M26003-3418P</b>	54.82	2.02	65.42

The overall framework applied for these factors is the Environmental Product Declaration (EPD), which quantifies "environmental information on the life cycle of a product and enable comparisons between products fulfilling the same function" (ISO, 2006). This follows the structure and applies a Life-Cycle Assessment approach to the entire Product stage from raw material through manufacturing (A1-A3))

**Kompan A/S**  
 C.F. Tietgens Boulevard 32C  
 DK-5220 Odense SØ  
 Denmark



## Verification of CO<sub>2</sub> calculation of: Themed play systems



Data version no. 2023-10-05

The CO<sub>2</sub> calculation and data are in compliance with the principles of a carbon footprint impact according to the GHG protocol (Greenhouse Gas Protocol), Scope 3, cradle to gate related to all individual components in the product category: "Themed play systems" represented by item no.: MSC641100-3717P.

(Scope 3 emissions include emission sources in the upstream and downstream value chain).

**Date: 30. October 2023 | Valid until: 30. October 2025**

Verified by:

Julie Marie Vejsgaard Larsen, LCA & EPD Consultant

Verification based on report: Validation of CO<sub>2</sub> calculation of 9 categories of Kompan product line, version 1.0, prepared by: Bureau Veritas HSE, Denmark: Julie M. V. Larsen.

**Publication date: 30. October 2023**

By Bureau Veritas HSE  
 www.bureauveritas.dk  
 +45 7731 1000

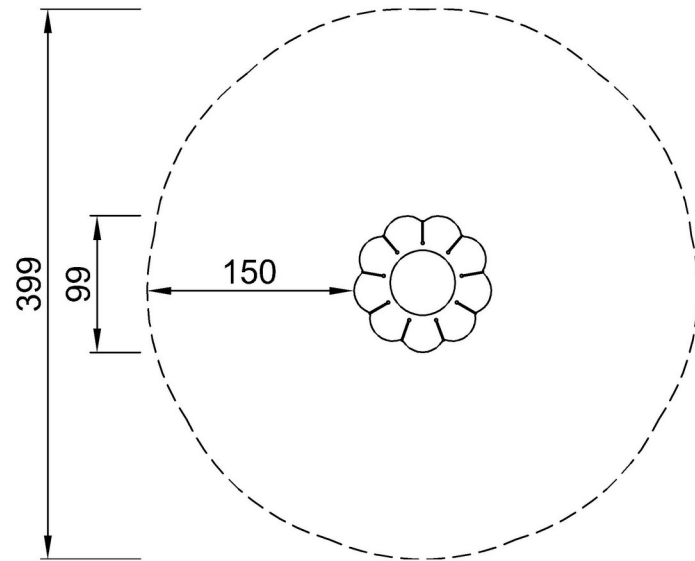


# Daisy Desk with Bowl

M26003

\* Max fall height | \*\* Total height | \*\*\* Safety surfacing area

\* Max fall height | \*\* Total height



[Click to see TOP VIEW](#)

[Click to see SIDE VIEW](#)