

LOOP Corner

TPP29520

Item no. TPP29520-0001

General Product Information

Dimensions LxWxH 140x140x40 cm

Age group

Play capacity (users)

Color options



The 90-degree Loop Corner module combines with Loop Line to delimit a ball court or a sandbox while also providing seating. Loop Corner is also designed for use as a number of differently shaped benches. For example 4 modules can be combined to create a square, while 3 Loop Arc modules form a circle.

LOOP Corner

TPP29520



The Loops modular elements are made of rotation molded polyethylene (PE) with a thickness of 6-7mm. The Loops are UV-resistant, have excellent impact strength and are usable within a large temperature span.



The product molds are textured through abrasive blasting, enhancing surface friction and reducing slipperiness ensuring a safer experience.



The Loops come in 10 standard colors, offering a variety of options to personalize your product and ensure a perfect fit for your intended space.

Item no. TPP29520-0001

Installation Information

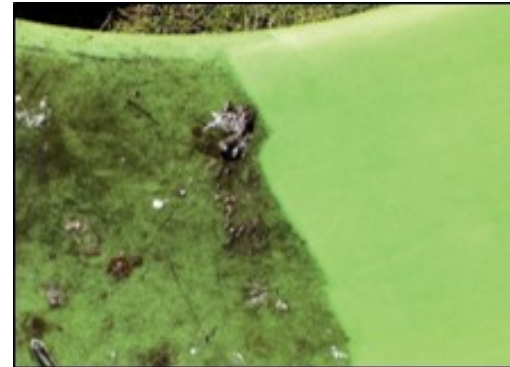
Total installation time	0.0
Excavation volume	0.00 m ³
Concrete volume	0.00 m ³
Footing depth (standard)	0 cm
Shipment weight	22 kg
Anchoring options	



The Loops are available in a recycled version made from 100% recycled materials. 85% of the plastic is sourced from internal waste and production surplus, while remaining 15% comes from polyethylene bags. The recycled version comes in an anthracite color.



The Loops can be anchored to the ground by filling them with water or sand using integrated plugs. Alternatively, they can be secured using surface or ground brackets.



This product withstands most cleaning agents and chemicals and can be cleaned using a high-pressure cleaner. The color can be revived using vinyl cleaner or similar.