


LOOP Line

TPP29530



LOOP Line is made to function independently as well as in combination. It combines with LOOP Arc to form a triangle, curving snake forms or any number of other customised solutions. Combined with LOOP Corner it forms rectangles to use for ball courts, elevated beds or sand boxes, where seating is the added bonus.

Item no. TPP29530-0001	
General Product Information	
Dimensions LxWxH	40x200x40 cm
Age group	
Play capacity (users)	
Colour options	

LOOP Line

TPP29530



The Loops modular elements are made of rotation molded polyethylene (PE) with at thickness of 6-7mm. The Loops are UV-resistant, have excellent impact strength and are usable within a large temperature span.



The product molds are textured through abrasive blasting, enhancing surface friction and reducing slipperiness ensuring a safer experience.



The Loops come in 10 standard colors, offering a variety of options to personalize your product and ensure a perfect fit for your intended space.

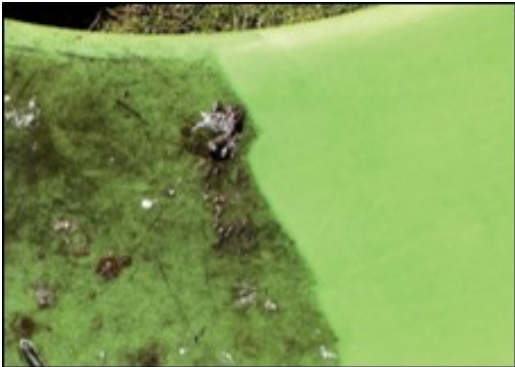
Item no. TPP29530-0001	
Installation Information	
Total installation time	0.0
Excavation volume	0.00 m³
Concrete volume	0.00 m³
Footing depth (standard)	0 cm
Shipment weight	22 kg
Anchoring options	In-ground ✓ Surface ✓
Warranty Information	
Supplier warranty applies	



The Loops are available in a recycled version made from 100% recycled materials. 85% of the plastic is sourced from internal waste and production surplus, while remaining 15% comes from polyethylene bags. The recycled version comes in an anthracite color.



The Loops can be anchored to the ground by filling them with water or sand using integrated plugs. Alternatively, they can be secured using surface or ground brackets.



This product withstands most cleaning agents and chemicals and can be cleaned using a high-pressure cleaner. The color can be revived using vinyl cleaner or similar.