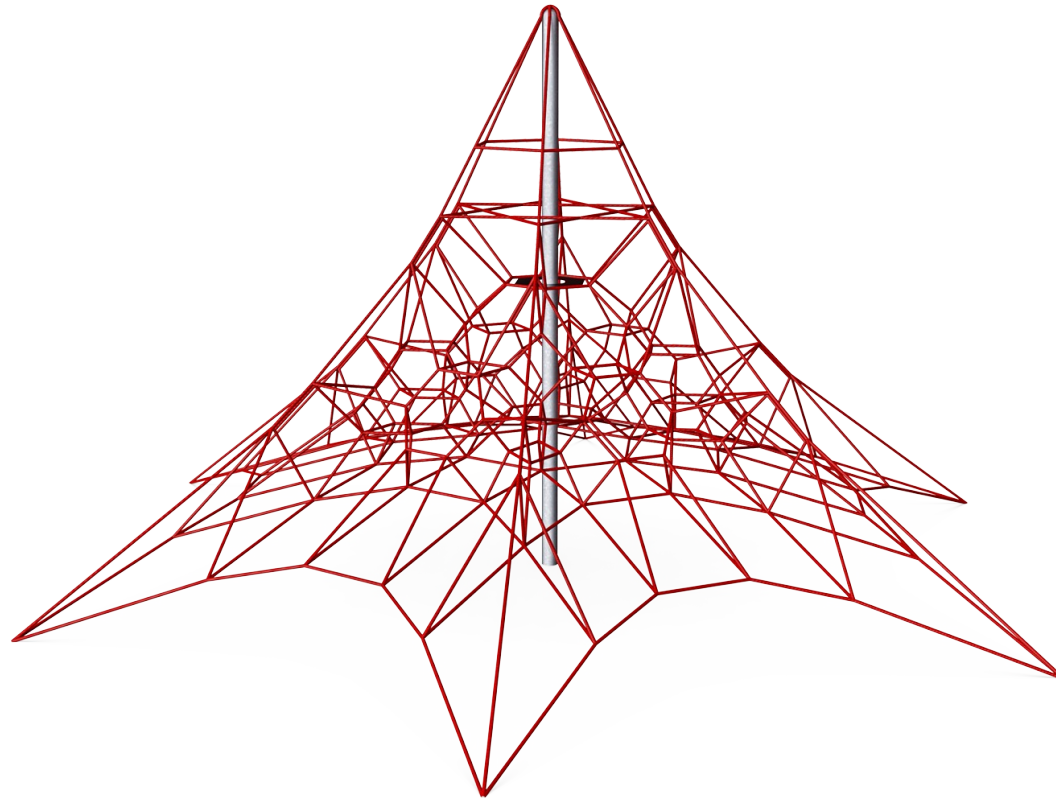
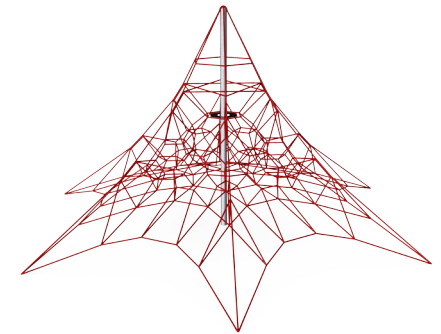
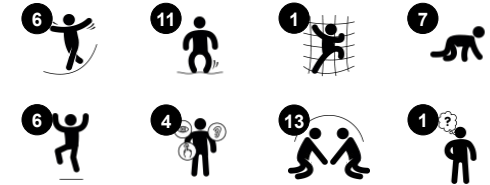


# Small Hexagonal Spacenet

COR36331



Item no. COR363311-1101	
<b>General Product Information</b>	
Dimensions LxWxH	780x780x393 cm
Age group	3+
Play capacity (users)	34
Color options	



The Small Hexagonal Spacenet encourages children to climb up high with its sturdy, bouncy ropes. The feeling of achievement when having climbed to the top is phenomenal making children come back again and again to have more of the bouncy climbing fun. Climbing the bouncy, interdependent meshes of the transparent net is challenging fun. Additionally

it trains fundamental motor skills like spatial awareness and sense of balance: These skills are necessary to judge distances and for instance navigate traffic safely. The swaying must make for training of major muscle groups when children climb and cling onto the moving meshes: arms push and pull, legs push and the core provides stability. Apart from being great

fun, the Small Hexagonal Spacenet trains courage and self regulation, skills necessary for children's social-emotional development.

# Small Hexagonal Spacenets

COR36331



Ropes of UV-stabilized PES rope strands with inner steel cable reinforcement. The polyester yarn is made from +95% post-consumer materials and is inductively melted onto each strand. The ropes are highly wear-and vandalism-resistant and can be replaced at site if needed.



Corocord 'S' clamps are used as universal connections in Corocord products. 8mm stainless steel rods with rounded edges are pressed around the ropes with a special hydraulic press, making them the ideal connector: safe, durable and vandalism-proof, all while allowing the typical movement of rope play structures.



Corocord membranes consist of friction-proof rubberized material of conveyor belt quality with excellent UV resistance. Tested and compliant with REACH requirements for PAH. Embedded is a four-layered armouring made of woven polyester. The armouring and the two surface layers result in a total thickness of 7.5 mm.

Item no. COR363311-1101

### Installation Information

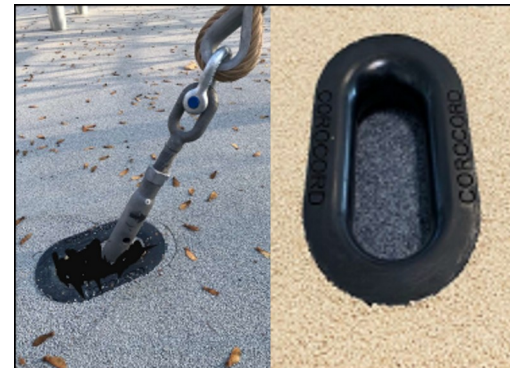
Max. fall height	100 cm
Safety surfacing area	71.0 m <sup>2</sup>
Total installation time	14.3
Excavation volume	7.00 m <sup>3</sup>
Concrete volume	4.90 m <sup>3</sup>
Footing depth (standard)	110 cm
Shipment weight	491 kg
Anchoring options	In-ground ✓



In the centre of the net is the mast, made of high quality seamless steel. The structure of the mast as an oscillating support is statically favourable and equalizes the oscillations in the net. The masts are hot dip galvanised as standard, with the design option of additional powder coating.



Through KOMPAN Variant Team, you can choose between additional 7 rope colours and customize your solution. The assortment is a wide span of colours ranking from elegant and expressive black or natural and toned-down hemp colour, to a range of attractive and eye-catching signal colours.

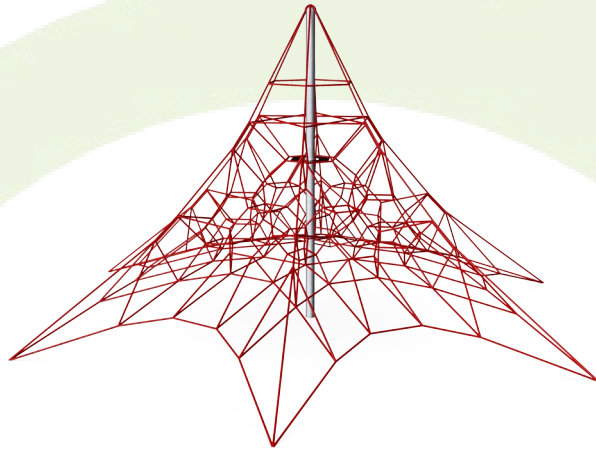


For installations using rubber surfacing the turnbuckle protectors are to be ordered separately.



# Sustainability Data

COR36331



Cradle to Gate A1-A3	Total CO <sub>2</sub> emission	CO <sub>2</sub> e/kg	Recycled materials
	kg CO <sub>2</sub> e	kg CO <sub>2</sub> e/kg	%
<b>COR363311-1101</b>	1,169.60	3.11	54.50

The overall framework applied for these factors is the Environmental Product Declaration (EPD), which quantifies "environmental information on the life cycle of a product and enable comparisons between products fulfilling the same function" (ISO, 2006). This follows the structure and applies a Life-Cycle Assessment approach to the entire Product stage from raw material through manufacturing (A1-A3))

**Kompan A/S**  
 C.F. Tietgens Boulevard 32C  
 DK-5220 Odense SØ  
 Denmark



## Verification of CO<sub>2</sub> calculation of: Corocord



Data version no. 2023-10-05

The CO<sub>2</sub> calculation and data are in compliance with the principles of a carbon footprint impact according to the GHG protocol (Greenhouse Gas Protocol), Scope 3, cradle to gate related to all individual components in the product category: "Corocord" represented by item no.: COR314011-1101.

(Scope 3 emissions include emission sources in the upstream and downstream value chain).

**Date: 30. October 2023 | Valid until: 30. October 2025**

Verified by:

Julie Marie Vejsgaard Larsen, LCA & EPD Consultant

Verification based on report: Validation of CO<sub>2</sub> calculation of 9 categories of Kompan product line, version 1.0, prepared by: Bureau Veritas HSE, Denmark: Julie M. V. Larsen.

**Publication date: 30. October 2023**

By Bureau Veritas HSE  
 www.bureauveritas.dk  
 +45 7731 1000

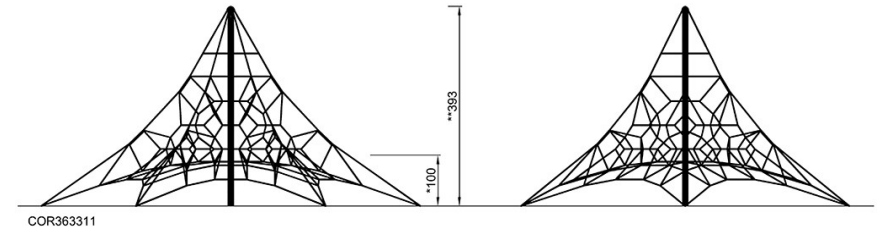
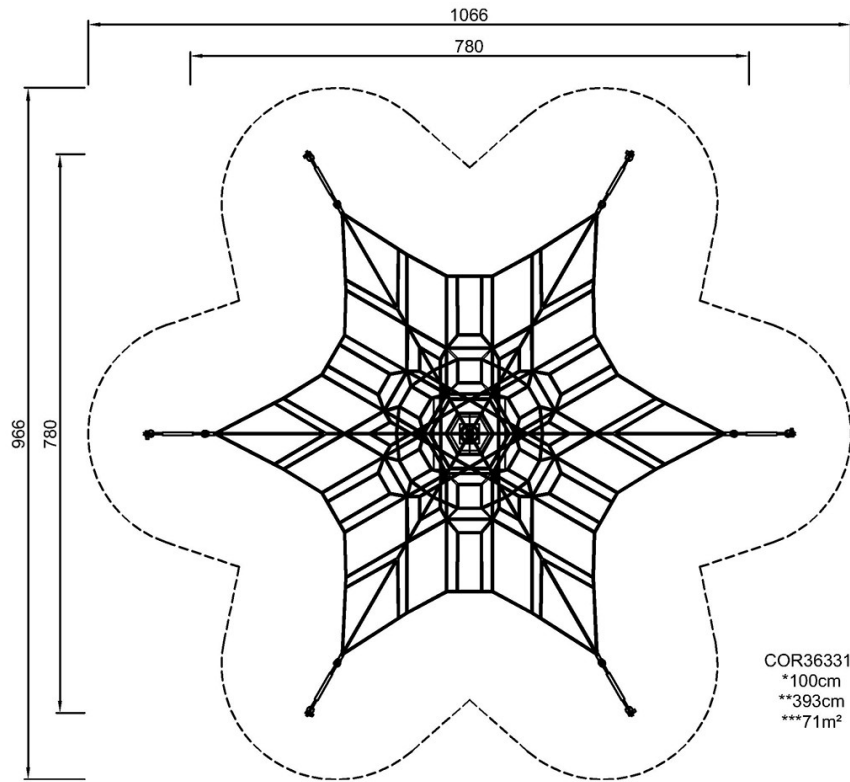


# Small Hexagonal Spacenet

COR36331

\* Max fall height | \*\* Total height | \*\*\* Safety surfacing area

\* Max fall height | \*\* Total height



Attention! Foundation anchor blocks exceeds safety zone area. See installation instructions.

[Click to see TOP VIEW](#)

[Click to see SIDE VIEW](#)