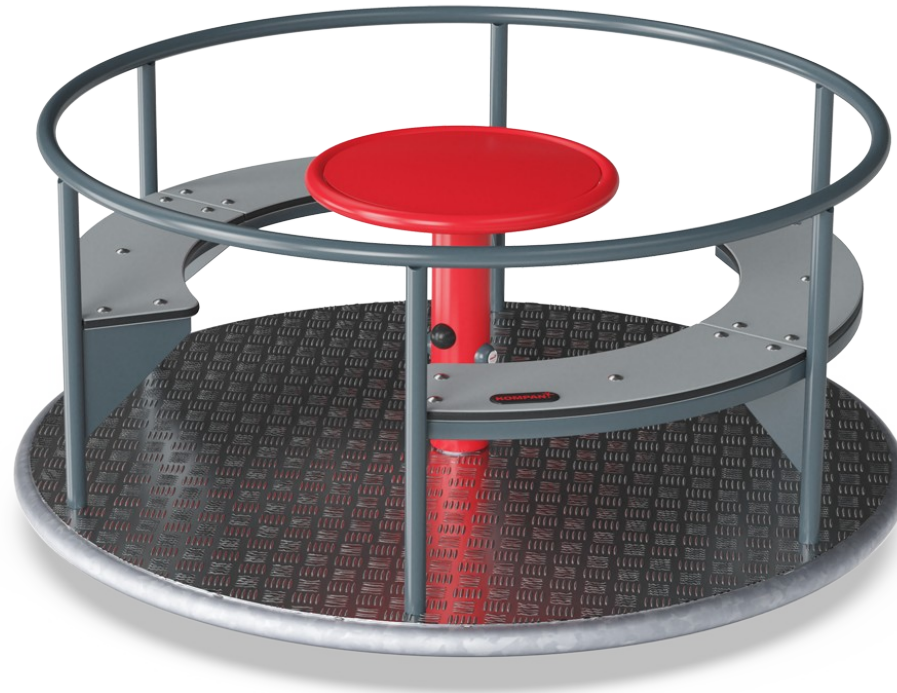


# Carousel with Bench

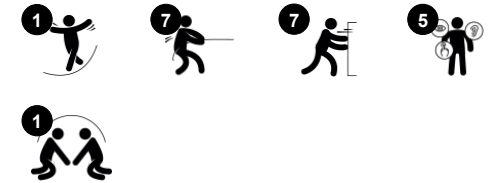
KPL114



Item no. KPL114-0902

## General Product Information

Dimensions LxWxH	155x155x71 cm
Age group	2+
Play capacity (users)	8
Colour options	



With its turntable centre and two benches, it radiates social spinning play, and children and adults cannot get enough of that. The spinning can be started by pushing or pulling the carousel into motion from the outside. Or, when seated, users can use the table as a stable base to turn the carousel from. The rounded shape makes room for users, both seated and

standing. Spinning on the carousel trains the vestibular system and the whole sense of balance which is fundamental for walking, running and even being able to sit still and concentrate. When the sense of balance is under-developed, children can't focus and also effects their posture when sitting or standing.

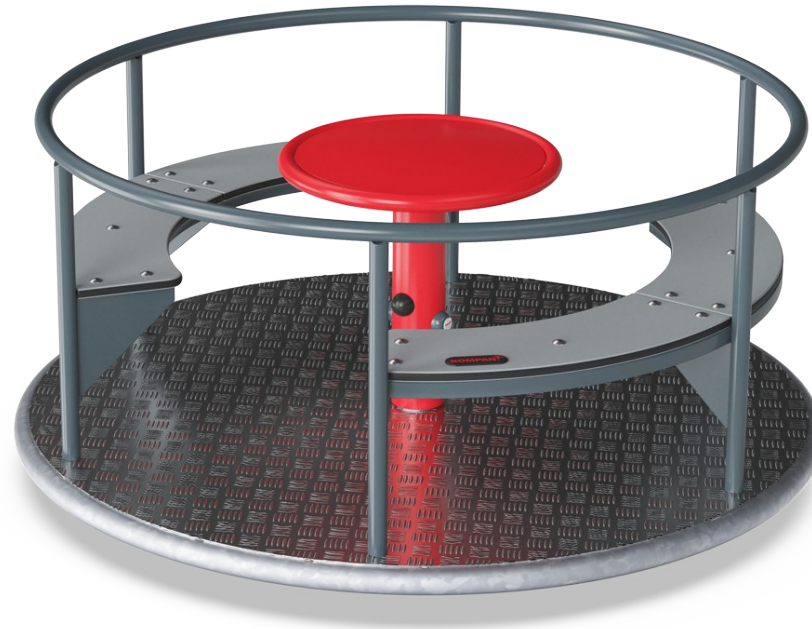
# Carousel with Bench

KPL114



## Center table

**Physical:** training of hand, arm and core muscles when turning the carousel. **Social-Emotional:** cooperation when spinning. Consideration of others when deciding speed of spin. **Cognitive:** understanding of 'cause and effect' and logical thinking for younger children.



## Carousel bench

**Social-Emotional:** great gathering points placed oppositely to make eye contact possible. This facilitates the cooperation in spinning the carousel.



## Handrails and side poles

**Physical:** pushing or pulling the carousel strengthens arm and leg muscles. **Social-Emotional:** pushing and pulling others facilitates cooperation and empathy: when to stop, how to take turns etc.



## 0

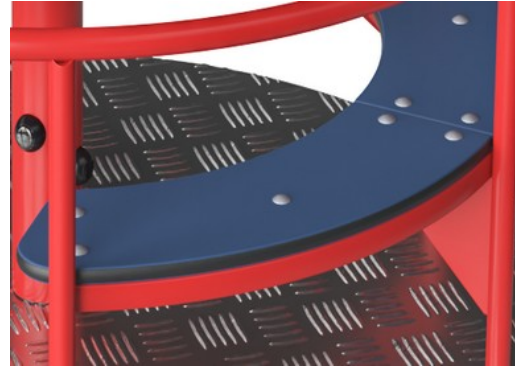
**Physical:** the rotation develops the sense of balance and space, children use their muscle strength and strengthen their cardio. **Social-Emotional:** listening and negotiating how slow or fast to go, children develop empathy and cooperation skills.

# Carousel with Bench

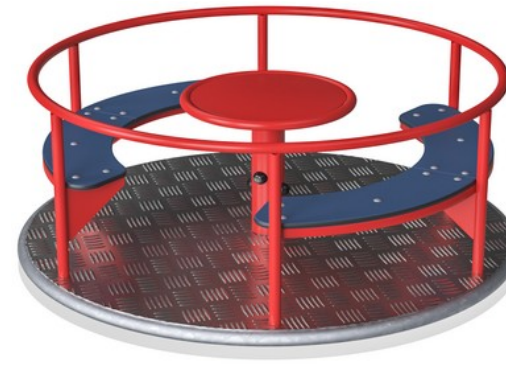
KPL114



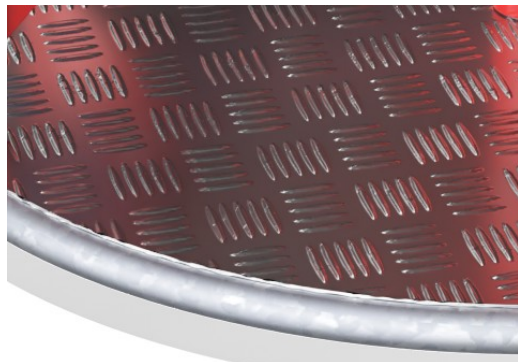
The steel surfaces are hot-dip galvanised inside and outside with lead free zinc and with powder coated top-finish. The galvanisation has excellent corrosion resistance in outside environments and requires low maintenance.



Seats are made of 19mm EcoCore™. EcoCore™ is a highly durable, eco-friendly material, which is not only recyclable after use but also consists of a core produced from 100% recycled material.



A heavy-duty engineered bearing system with two single row deep groove high-quality ball bearings with rubber seals. The fully closed bearing construction is lifetime lubricated and located above ground.



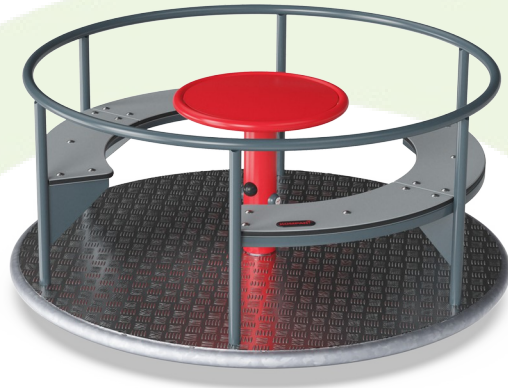
Deck plate of 3mm thick, high-quality aluminium with 2mm texture pattern. This aluminium plate maintains safety requirements and requires low maintenance.

Item no. KPL114-0902	
<b>Installation Information</b>	
Max. fall height	100 cm
Safety surfacing area	24.2 m <sup>2</sup>
Total installation time	4.1
Excavation volume	0.56 m <sup>3</sup>
Concrete volume	0.50 m <sup>3</sup>
Footing depth (standard)	100 cm
Shipment weight	193 kg
Anchoring options	In-ground ✓
<b>Warranty Information</b>	
Aluminium Deck	15 years
Bearing Construction	5 years
Galvanised Steel	Lifetime
HPL Decks	15 years
Spare Parts Guarantee	10 years



# Sustainability Data

KPL114



Cradle to Gate A1-A3	Total CO <sub>2</sub> emission	CO <sub>2</sub> e/kg	Recycled materials
	kg CO <sub>2</sub> e	kg CO <sub>2</sub> e/kg	%
<b>KPL114-0902</b>	527.35	3.20	48.01

The overall framework applied for these factors is the Environmental Product Declaration (EPD), which quantifies "environmental information on the life cycle of a product and enable comparisons between products fulfilling the same function" (ISO, 2006). This follows the structure and applies a Life-Cycle Assessment approach to the entire Product stage from raw material through manufacturing (A1-A3))

**Kompan A/S**  
 C.F. Tietgens Boulevard 32C  
 DK-5220 Odense SØ  
 Denmark



## Verification of CO<sub>2</sub> calculation of: Freestanding play equipment



Data version no. 2023-10-05

The CO<sub>2</sub> calculation and data are in compliance with the principles of a carbon footprint impact according to the GHG protocol (Greenhouse Gas Protocol), Scope 3, cradle to gate related to all individual components in the product category: "Freestanding play equipment" represented by item no.: GXY916012-3417.

(Scope 3 emissions include emission sources in the upstream and downstream value chain).

**Date: 30. October 2023 | Valid until: 30. October 2025**

**Verified by:**

Julie Marie Vejsgaard Larsen, LCA & EPD Consultant

Verification based on report: Validation of CO<sub>2</sub> calculation of 9 categories of Kompan product line, version 1.0, prepared by: Bureau Veritas HSE, Denmark: Julie M. V. Larsen.

**Publication date: 30. October 2023**

**By Bureau Veritas HSE**  
 www.bureauveritas.dk  
 +45 7731 1000

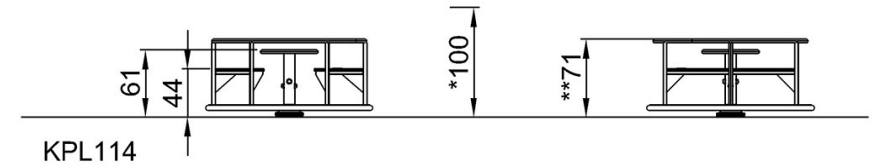
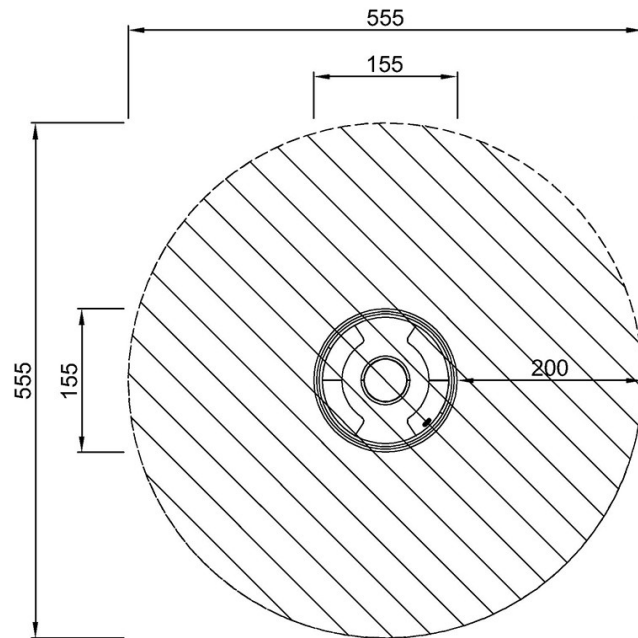


# Carousel with Bench

KPL114

\* Max fall height | \*\* Total height | \*\*\* Safety surfacing area

\* Max fall height | \*\* Total height



KPL114  
\*100cm  
\*\*71cm  
\*\*\*24.2m<sup>2</sup>

[Click to see TOP VIEW](#)

[Click to see SIDE VIEW](#)