

# Balance Station

FSW227



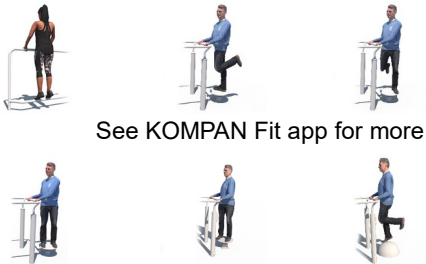
The Balance station trains ankle strength and stability with the four items in the station having different difficulty levels that allow for progression and a challenge for every user type. At the same time, the placement of the four stations around the ring promotes moderate social interaction. The wobble boards train ankle control and flexibility and is present

in two difficulty levels. One that is stable and limited in its range of motion and one that is livelier and more dynamic. Rotation can be used for rotational flexibility of the torso and for lower limb balance and control standing on one or two feet. The half ball provides a fixed and stable platform to train ankle strength and flexibility.

Item no. FSW22700-0902

### General Product Information

Dimensions LxWxH 202x198x124 cm  
Age group 13+  
Play capacity (users) 4  
Colour options



See KOMPAN Fit app for more



# Balance Station

FSW227



The double ROSTA element is made of casted iron and hot-dip galvanised before being painted. This ensures that the ROSTA element is a maintenance-free, elastic joint which can move in 250 degrees in any direction. Both wobbles have different stiffness and differences of 45%.



The bearings used in the twist are slide bearings. These are made from extremely strong polyoxymethylene which is low wearing, highly mechanical, moisture absorbant and provides high abrasion resistance.



The half ball is  $\varnothing 500 \times 250$ . The material is SBR granular rubber, recycled SBR (Styrene Butadiene Monomer, Synthetic Rubber) UV stabilised to a maximum without the use of heavy metal stabilisers, for optimal grip during jumping and stepping exercises under all weather circumstances.



The  $\varnothing 414$ mm top plate is made from 15mm Ekogrip®, a 15mm PE plate with a 3mm top-layer of thermoplastic rubber with non-skid effect. The height is 217mm and the range of motion is  $\pm 90^\circ$ , with a EPDM rubber stop at each end.



Handrail intended as grips during exercises are made of hot-dip galvanised steel  $\varnothing 38$ mm, a great diameter for a good grip and to support the wrist. The height of the handrail is 940mm from the top of the HPL plate. The distance between the rails is 900mm.



The information sign is made of a PA6 (Polyamide) and shows the most relevant exercises. When users scan the QR code, this will link them to an animated illustration of the exercise and offers the possibility of downloading the KOMPAN Fitness App, which is programmed with many more exercise alternatives.

Item no. FSW22700-0902

## Installation Information

|                          |                          |
|--------------------------|--------------------------|
| Max. fall height         | 25 cm                    |
| Safety surfacing area    | 18.0 m <sup>2</sup>      |
| Total installation time  | 4.7                      |
| Excavation volume        | 0.43 m <sup>3</sup>      |
| Concrete volume          | 0.21 m <sup>3</sup>      |
| Footing depth (standard) | 90 cm                    |
| Shipment weight          | 233 kg                   |
| Anchoring options        | In-ground ✓<br>Surface ✓ |

## Warranty Information

|                       |          |
|-----------------------|----------|
| Bearing Construction  | 5 years  |
| Galvanised Steel      | Lifetime |
| Post                  | 10 years |
| ROSTA Element         | 2 years  |
| Spare Parts Guarantee | 10 years |



# Sustainability Data

FSW227



| Cradle to Gate A1-A3 | Total CO <sub>2</sub> emission | CO <sub>2</sub> e/kg    | Recycled materials |
|----------------------|--------------------------------|-------------------------|--------------------|
|                      | kg CO <sub>2</sub> e           | kg CO <sub>2</sub> e/kg | %                  |
| FSW22700-0902        | 333.58                         | 2.05                    | 62.10              |

The overall framework applied for these factors is the Environmental Product Declaration (EPD), which quantifies "environmental information on the life cycle of a product and enable comparisons between products fulfilling the same function" (ISO, 2006). This follows the structure and applies a Life-Cycle Assessment approach to the entire Product stage from raw material through manufacturing (A1-A3))

**Kompan A/S**  
C.F. Tietgens Boulevard 32C  
DK-5220 Odense SØ  
Denmark



### Verification of CO<sub>2</sub> calculation of: Fitness



Data version no. 2023-10-05

The CO<sub>2</sub> calculation and data are in compliance with the principles of a carbon footprint impact according to the GHG protocol (Greenhouse Gas Protocol), Scope 3, cradle to gate related to all individual components in the product category: "Fitness" represented by item no.: FAZ10100-0900.

(Scope 3 emissions include emission sources in the upstream and downstream value chain).

**Date: 30. October 2023 | Valid until: 30. October 2025**  
**Verified by:**

Julie Marie Vejsgaard Larsen, LCA & EPD Consultant

Verification based on report: Validation of CO<sub>2</sub> calculation of 9 categories of Kompan product line, version 1.0, prepared by: Bureau Veritas HSE, Denmark: Julie M. V. Larsen.

**Publication date: 30. October 2023**

**By Bureau Veritas HSE**  
www.bureauveritas.dk  
+45 7731 1000

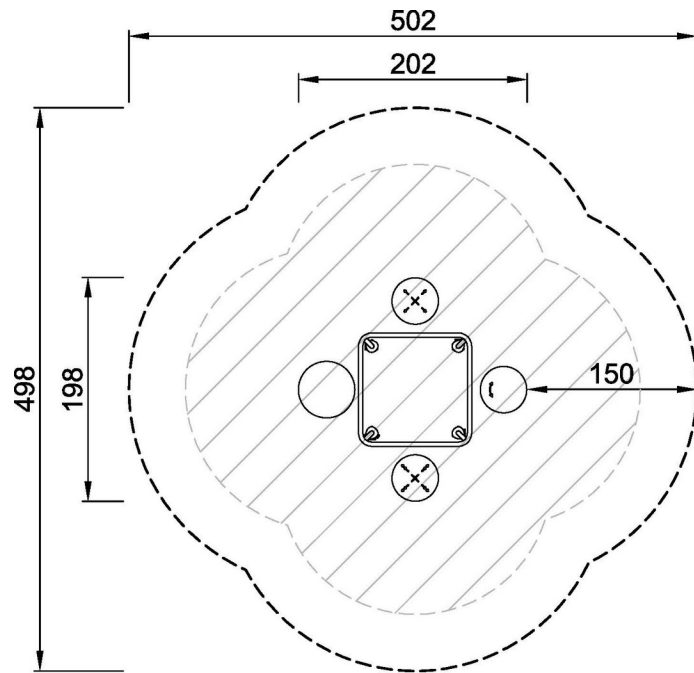


# Balance Station

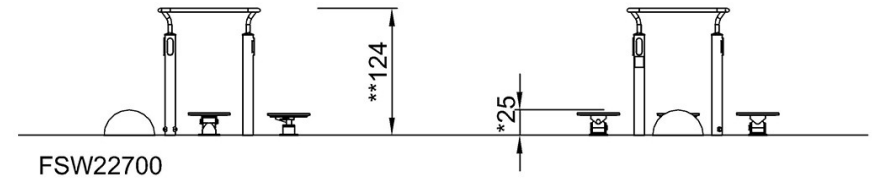
FSW227

\* Max fall height | \*\* Total height | \*\*\* Safety surfacing area

\* Max fall height | \*\* Total height



FSW22700  
\*25cm  
\*\*124cm  
\*\*\*18m<sup>2</sup>  
1:100



[Click to see TOP VIEW](#)

[Click to see SIDE VIEW](#)