

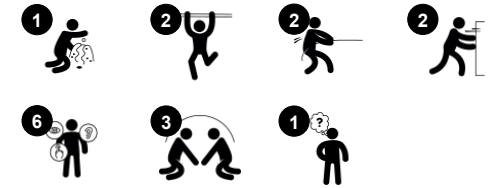
Rider

PCE50121

KOMPAN
Let's play



产品编号 PCE50121-0603	
产品信息概览	
长宽高尺寸	120x179x237 cm
适用年龄段	2+
容纳人数	9
颜色选择	



The whimsical look of the Rider attracts children's curiosity. Irresistible, they just have to try it out! Due to the fine sensory and gross motor activities of the Rider, retention is ensured: the density of play activities in a cosy space is obvious. By the children or adults pushing or pulling, the Rider can be turned to face different ways. This trains major muscles

and the spatial awareness. It also provides variety in play. The seat in the middle also functions as a table, and the steering wheel turns it into a vehicle, stimulating the children's imagination. The huge rounded window not only provides a great lookout to the outside, it also distorts the sound of the voice, a great attraction and cause and effect function,

developing the children's logical thinking.



Rider

PCE50121



Bubble Window

社交情感：内外部之间的社交互动。**认知能力：**声音的扭曲培养逻辑思维。



旋转轮

认知能力：可操作的物体可以激发对因果关系的理解。



长凳

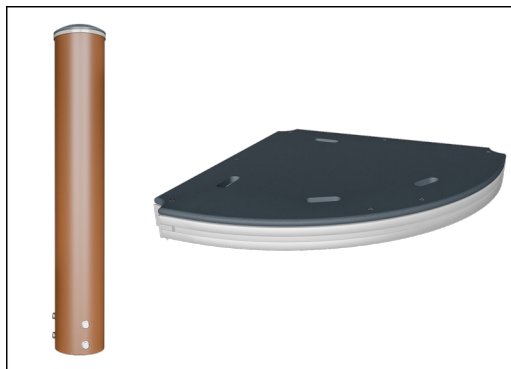
社交情感：聚会、合作或休息，这些都可训练社交技能。

Rider

PCE50121



ELEMENTS 的弧形面板由 UV 稳定的可回收 PE 模制而成，具有多种内建游戏功能选项，提供卓越的面板解决方案。直面板由 KOMPAN 19mm PE EcoCore™ 制成，这是一种高度耐用，环保且可回收的材料。



ELEMENTS 系列中的平台底板由 17.8 毫米厚的高压层压板制成，由独特设计的铝制框架支撑。通过铝制接头可以加装多个附件。主立柱由优质的预镀锌钢制成，表面涂有粉末涂层。柱顶采用防紫外线的尼龙（PA6）盖帽封闭。



ELEMENTS 产品提供三种不同的颜色组合：经典系列的蓝色和绿色，繁花系列的橙色和黄色，自然系列的柠檬色和绿色。

产品编号 PCE50121-0603

安装信息

最大跌落高度	30 cm
安全面积	18.1 m ²
安装总时长	6.6
开挖量	0.06 m ³
混凝土使用量	0.00 m ³
标准入地深度	60 cm
运输重量	161 kg
固定选项	地表 ✓ 入地 ✓

质保信息

弧形面板	10 年
EcoCore HDPE	终身质保
HPL	15 年
立柱	10 年
承保零部件	10 年



Sustainability Data

PCE50121



从原材料到成品

CO₂ 排放总量

kg CO₂e

CO₂ 排放量 / 千克

kg CO₂e/kg

回收的原料

%

PCE50121-0603

330.02

2.93

36.63

这些因素采用的总体框架为环保产品声明 (EPD), 该声明可量化“产品生命周期的环保信息, 并对相同功能的产品进行对比” (ISO, 2006)。在遵循该框架的同时, 对从原材料到制造的整个产品阶段 (A1-A3) 应用生命周期评估法。

Kompan A/S

C.F. Tietgens Boulevard 32C
DK-5220 Odense SØ
Denmark



Verification of CO₂ calculation of: Play systems



Data version no. 2023-10-05

The CO₂ calculation and data are in compliance with the principles of a carbon footprint impact according to the GHG protocol (Greenhouse Gas Protocol), Scope 3, cradle to gate related to all individual components in the product category: "Play systems" represented by item no.: PCM200321-0950.

(Scope 3 emissions include emission sources in the upstream and downstream value chain).

Date: 30. October 2023 | Valid until: 30. October 2025

Verified by:

Julie Marie Vejsgaard Larsen, LCA & EPD Consultant

Verification based on report: Validation of CO₂ calculation of 9 categories of Kompan product line, version 1.0, prepared by: Bureau Veritas HSE, Denmark: Julie M. V. Larsen.

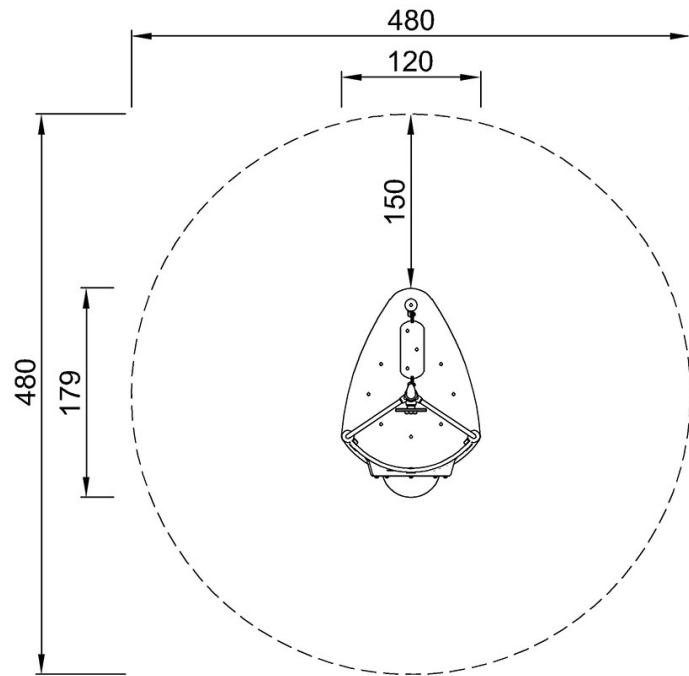
Publication date: 30. October 2023

By Bureau Veritas HSE
www.bureauveritas.dk
+45 7731 1000

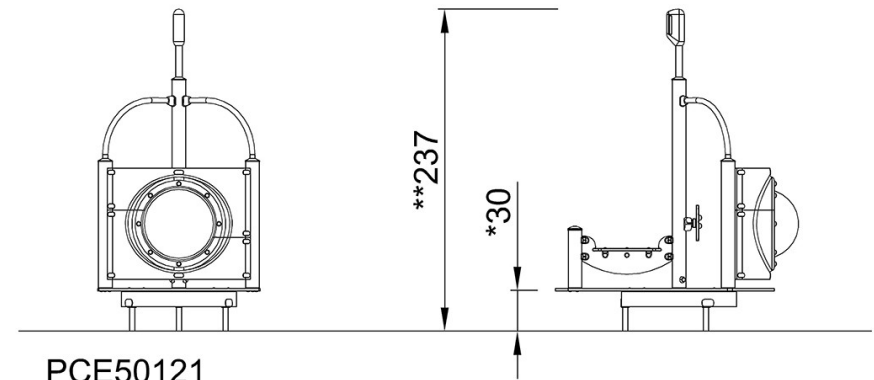


最大跌落高度 | 总高度 | 安全区域

最大跌落高度 | 总高度



PCE50121
*30cm
**237cm
***18.1m²



PCE50121

[点击查看俯视图](#)

[点击查看侧面图](#)