
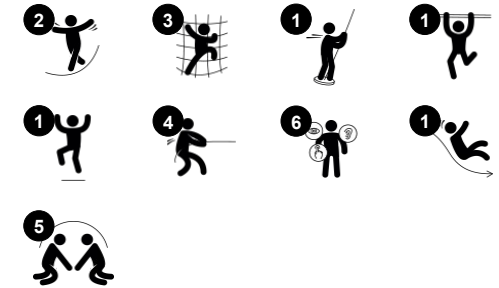


Double Tower with Spider Net and Bridge, ADA

NRO2009



Item no. NRO2009-1021	
General Product Information	
Dimensions LxWxH	822x679x417 cm
Age group	4+
Play capacity (users)	27
Colour options	



The Double Tower with Spider Net is an irresistible play attraction for children. With its varied play corners and diverse physical play activities, it attracts children again and again, for a long time. The spider web net trains the children's cross-coordination, balance, and spatial awareness with its inclined net rungs which are all crucial life skills. The balance

beam and fireman's pole both appeal to dare-devils with their stomach-tickling height and speed. These play events train the balance and sense of space. Furthermore, the fireman's pole activity train children's bone density, by jumping down. This is particularly important as children grow muscle mass primarily in their early years. The accessible stairway leads

users with a range of abilities up to the slide. Going down, users are lopped back to the stair entrance, which is also a meeting place.



Double Tower with Spider Net and Bridge, ADA

NRO2009



Net bridge

Physical: children develop spatial awareness in the open net. **Social-Emotional:** interaction with children outside, socialising. Cooperation and consideration, e.g. when passing others.



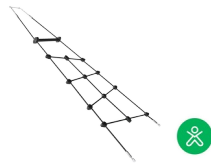
Side desk

Social-Emotional: fine meeting place and a space creator. Sharing and cooperation from both sides to create a social scenario that supports communication and cooperation.



Fireman's pole

Physical: supports coordination, arm and core muscles. Landing strengthens bone density. **Social-Emotional:** turn-taking and risk-taking.



Climbing net

Physical: the inclined net supports the upward climbing movement of the body. The net supports cross-body coordination, which impacts coordination of the right and left part of brain, fundamental for other skills such as the ability to read. The asymmetry of the net challenges the children's climbing.



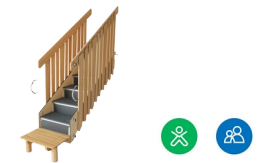
Slide

Physical: develops spatial awareness, sense of balance and trains core muscles when sitting upright going down. **Social-Emotional:** empathy stimulated by turn-taking.



Vertical spider net

Physical: supports cross coordination, cooperation of left and right brain half. Strengthens core, arm and leg muscles. **Social-Emotional:** supports social abilities such as cooperation and communication when letting others cross the net.



Accessible stairway

Physical: climbing the accessible stairway is for all and supports cross coordination as well as arm and leg muscles. **Social-Emotional:** room for active breaks and adult helpers. An inclusive space.

Double Tower with Spider Net and Bridge, ADA

NRO2009



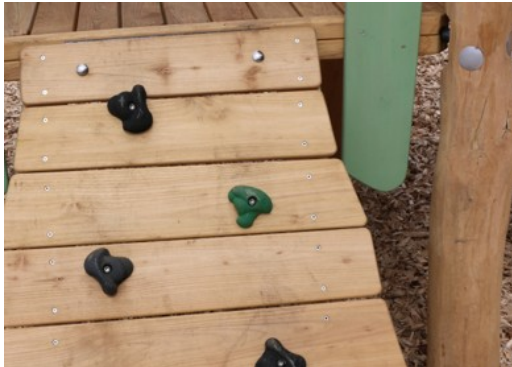
All organic Robinia products by KOMPAN are made of Robinia wood which is sourced from sustainable plantation farms. On request it can be supplied as FSC® Certified (FSC® C004450).



The paint used for coloured components is water-based, which is environmentally friendly and has excellent UV resistance. The paint is compliant with Australian Standards.



The Robinia products come in a number of standard colour options. The wood can also be supplied as untreated or with brown painted with a pigment that maintains the wood colour.



The product/activities are preassembled from the factory to ensure all safety requirements are considered.



The hardware is made of stainless steel or galvanised steel to ensure durable connections that has high corrosion resistance.

Item no. NRO2009-1021

Installation Information

Max. fall height	209 cm
Safety surfacing area	68.2 m ²
Total installation time	36.4
Excavation volume	2.29 m ³
Concrete volume	0.32 m ³
Footing depth (standard)	100 cm
Shipment weight	1,856 kg
Anchoring options	In-ground ✓

Warranty Information

Robinia Wood	15 years
Ropes & Nets	10 years
Spare Parts Guarantee	10 years
Stainless Steel Components	Lifetime



Sustainability Data

NRO2009



Cradle to Gate A1-A3	Total CO ₂ emission	CO ₂ e/kg	Recycled materials
	kg CO ₂ e	kg CO ₂ e/kg	%
NRO2009-1021	944.37	0.65	7.50

The overall framework applied for these factors is the Environmental Product Declaration (EPD), which quantifies "environmental information on the life cycle of a product and enable comparisons between products fulfilling the same function" (ISO, 2006). This follows the structure and applies a Life-Cycle Assessment approach to the entire Product stage from raw material through manufacturing (A1-A3))

Kompan A/S
 C.F. Tietgens Boulevard 32C
 DK-5220 Odense SØ
 Denmark



Verification of CO₂ calculation of: Nature play



Data version no. 2023-10-05

The CO₂ calculation and data are in compliance with the principles of a carbon footprint impact according to the GHG protocol (Greenhouse Gas Protocol), Scope 3, cradle to gate related to all individual components in the product category: "Nature play" represented by item no.: NRO409-0621.

(Scope 3 emissions include emission sources in the upstream and downstream value chain).

Date: 30. October 2023 | Valid until: 30. October 2025

Verified by:

Julie Marie Vejsgaard Larsen, LCA & EPD Consultant

Verification based on report: Validation of CO₂ calculation of 9 categories of Kompan product line, version 1.0, prepared by: Bureau Veritas HSE, Denmark: Julie M. V. Larsen.

Publication date: 30. October 2023

By Bureau Veritas HSE
 www.bureauveritas.dk
 +45 7731 1000

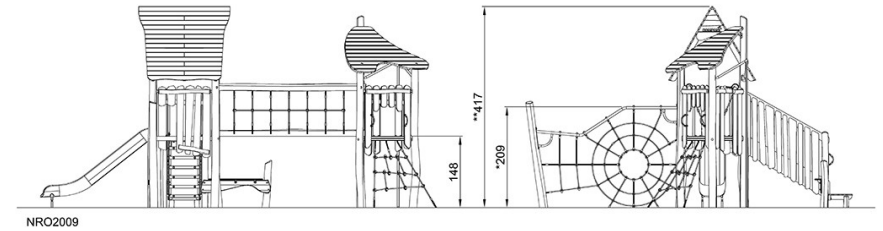
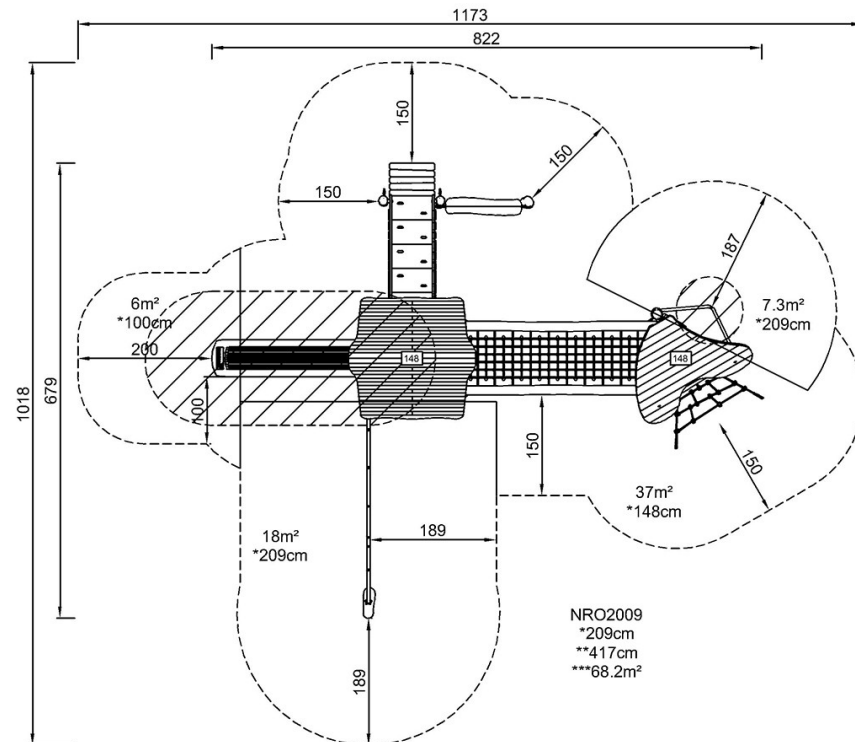


Double Tower with Spider Net and Bridge, ADA

NRO2009

* Max fall height | ** Total height | *** Safety surfacing area

* Max fall height | ** Total height



[Click to see TOP VIEW](#)

[Click to see SIDE VIEW](#)