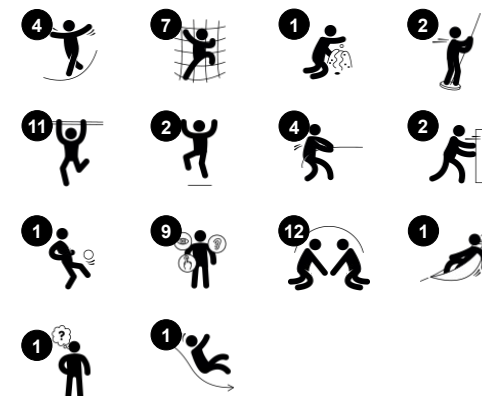


# QUEENSBORO Play & Agility Tower

PCX2102



| Item no. PCX210200-0901     |  |
|-----------------------------|--|
| General Product Information |  |
| Dimensions LxWxH            | 893x649x440 cm   |
| Age group                   | 5 - 12   |
| Play capacity (users)       | 52   |
| Colour options              | <span style="color: green;">●</span> <span style="color: red;">●</span> <span style="color: green;">●</span> |



The Queensboro offers a wide variety of play activities including climbing, sliding and other challenging physical activities, such as overhead ladders for monkey walks, balance beams and bars in different heights for agility training. The platform has egresses via banister bars, a slide and a fireman's pole. Challenging activities stimulating children's courage and

self esteem. The entrances include a wide stairway and the climbing wall with a fast and a more challenging side. The variety of activities ensure play for everyone. Apart from being great fun, climbing, sliding and walking along the monkey bars or balance beam trains children's muscles as well as their motor skills such as cross-body coordination and balance.

# QUEENSBORO Play & Agility Tower

PCX2102



## Overhead ladder

**Physical:** develops children's upper body muscles and arm strength, cross coordination and spatial awareness. This is especially important due to sedentary lifestyles and back-pain in children. **Social-Emotional:** chill and socialize on top of the overhead ladder, training cooperation.



## Talk tube

**Social-Emotional:** encourages communication and social interaction. **Cognitive:** evokes curiosity and stimulates an understanding of cause and effect and object permanence: objects and persons exist also when out of sight.



## Pattern panel

**Social-Emotional:** communication and cooperation exploring the maze with friends. **Cognitive:** stimulates memory when memorizing maze routes. Learning about perspective when looking at things at a certain distance.



## Hammock

**Physical:** coordination and sense of balance when swaying. **Social-Emotional:** meeting, pushing friends gently back and forth, turn-taking.



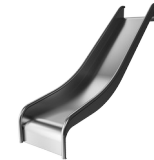
## Fireman's pole

**Physical:** coordination is supported when going down, as well as arm and core muscles. Landing strengthens bone density, which is built for life in early childhood. **Social-Emotional:** turn-taking and risk-taking.



## Climbing wall

**Physical:** develops children's cross coordination, eye-hand coordination, and muscle strength when climbing. **Social-Emotional:** two-sided climb invites cooperation.



## Slide

**Physical:** sliding develops spatial awareness and a sense of balance. Furthermore, the core muscles are trained when sitting upright going down. **Social-Emotional:** empathy stimulated by turn-taking.

# QUEENSBORO Play & Agility Tower

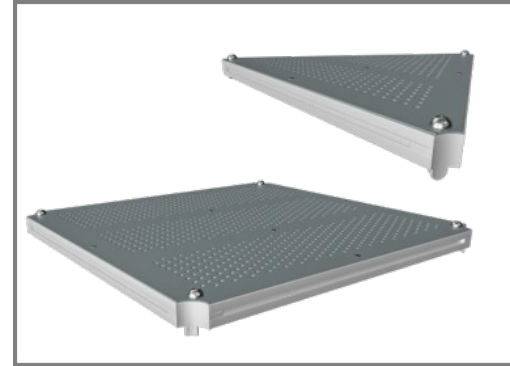
PCX2102



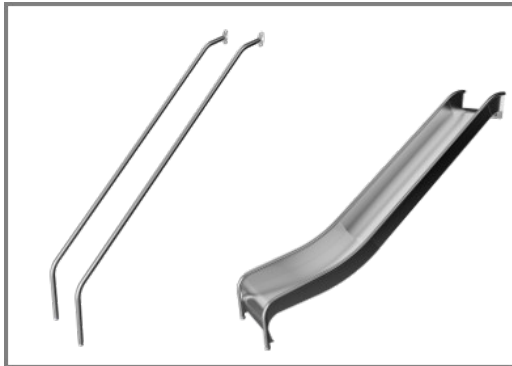
All steel components are made of high quality materials. The posts have an alloy with improved tensile and yield strength according to the NYCP material specification. The painted aluminum post caps are riveted to the top of the post.



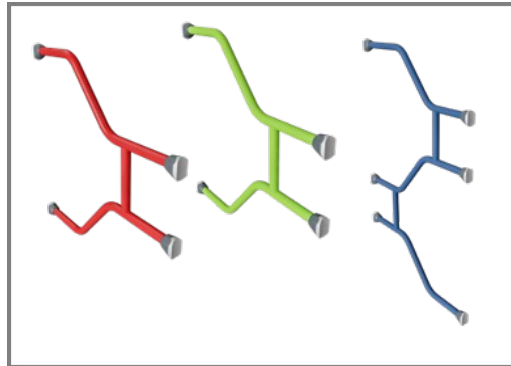
All panels and one-piece welded steel grids are made of low carbon steel and corrosion treated by hot dip galvanization or metallization with a minimum thickness according to NYCP material specification.



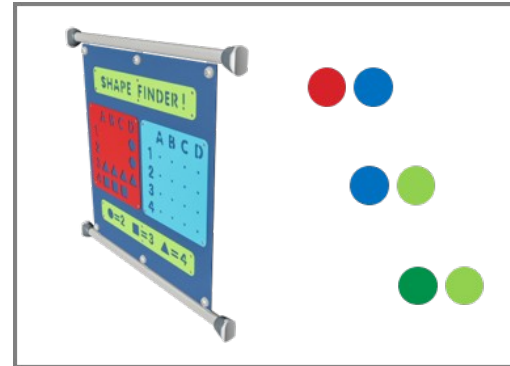
All decks are made of perforated low carbon steel plates supported by aluminum profiles with no unsupported area larger than four square feet. After metallization the decks are coated with a polyurea non-slip surface which provides extremely good wear and tear resistance.



The stainless steel activities are made of high quality stainless steel. The steel is glass blasted after manufacturing to ensure a smooth gliding surface.



The steel surfaces are hot dip galvanized inside and outside with lead free zinc. The galvanization has excellent corrosion resistance in outside environments and requires low maintenance.



The products are designed in three different standard color combinations: Red and light blue, Light blue and lime green, Green and lime green. The layouts of the play structures can be customized through the KOMPAN Variant Team.

Item no. PCX210200-0901

### Installation Information

|                          |                     |
|--------------------------|---------------------|
| Max. fall height         | 276 cm              |
| Safety surfacing area    | 67.3 m <sup>2</sup> |
| Total installation time  | 40.8                |
| Excavation volume        | 1.07 m <sup>3</sup> |
| Concrete volume          | 0.22 m <sup>3</sup> |
| Footing depth (standard) | 85 cm               |
| Shipment weight          | 1,953 kg            |
| Anchoring options        | In-ground ✓         |

### Warranty Information

|                        |          |
|------------------------|----------|
| EcoCore HDPE           | Lifetime |
| HDG post               | Lifetime |
| HPL decks              | 15 years |
| Ropes & nets           | 10 years |
| Spare parts guaranteed | 10 years |

| Elevated activities 0 | Accessible elevated activities | Accessible ground level activities | Accessible ground level play types |
|-----------------------|--------------------------------|------------------------------------|------------------------------------|
| Present               | 8                              | 6                                  | 5                                  |
| Required              | 4                              | 3                                  | 3                                  |

**CSA  
Z614**  
compliant

# Sustainability Data

PCX2102



| Cradle to Gate A1-A3  | Total CO <sub>2</sub> emission | CO <sub>2</sub> e/kg    | Recycled materials |
|-----------------------|--------------------------------|-------------------------|--------------------|
|                       | kg CO <sub>2</sub> e           | kg CO <sub>2</sub> e/kg | %                  |
| <b>PCX210200-0901</b> | 4,908.70                       | 3.40                    | 46.80              |

The overall framework applied for these factors is the Environmental Product Declaration (EPD), which quantifies "environmental information on the life cycle of a product and enable comparisons between products fulfilling the same function" (ISO, 2006). This follows the structure and applies a Life-Cycle Assessment approach to the entire Product stage from raw material through manufacturing (A1-A3))

**Kompan A/S**  
 C.F. Tietgens Boulevard 32C  
 DK-5220 Odense SØ  
 Denmark



## Verification of CO<sub>2</sub> calculation of: Play systems



Data version no. 2023-10-05

The CO<sub>2</sub> calculation and data are in compliance with the principles of a carbon footprint impact according to the GHG protocol (Greenhouse Gas Protocol), Scope 3, cradle to gate related to all individual components in the product category: "Play systems" represented by item no.: PCM200321-0950.

(Scope 3 emissions include emission sources in the upstream and downstream value chain).

**Date: 30. October 2023 | Valid until: 30. October 2025**

Verified by:

Julie Marie Vejsgaard Larsen, LCA & EPD Consultant

Verification based on report: Validation of CO<sub>2</sub> calculation of 9 categories of Kompan product line, version 1.0, prepared by: Bureau Veritas HSE, Denmark: Julie M. V. Larsen.

**Publication date: 30. October 2023**

By Bureau Veritas HSE  
 www.bureauveritas.dk  
 +45 7731 1000

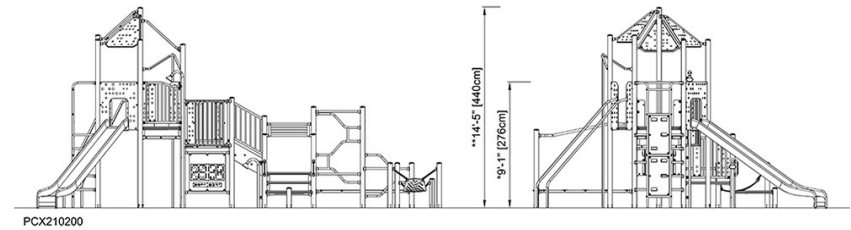
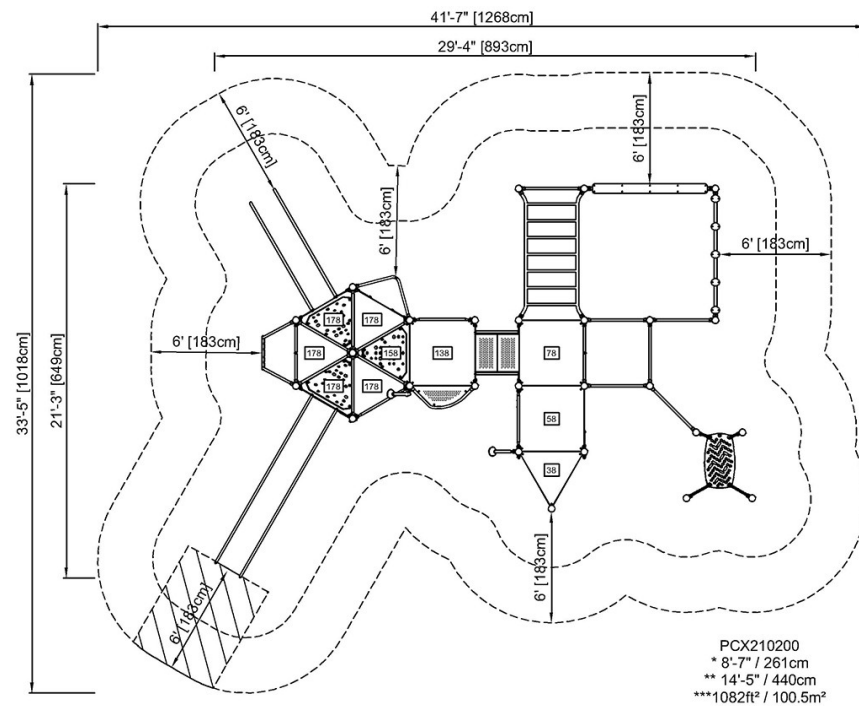


# QUEENSBORO Play & Agility Tower

PCX2102

\* Max fall height | \*\* Total height | \*\*\* Safety surfacing area

\* Max fall height | \*\* Total height



[Click to see TOP VIEW](#)

[Click to see SIDE VIEW](#)