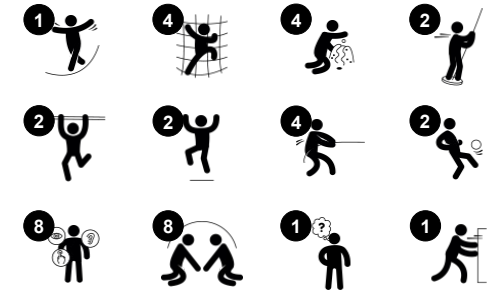


Fire Station with Hose Tower

PCM52221



| Item no. PCM52221-0901 | |
|-----------------------------|------------------------------------|
| General Product Information | |
| Dimensions LxWxH | 676x465x470 cm |
| Age group | 4+ |
| Play capacity (users) | 20 |
| Colour options | ● |



The Fire Station with Hose Tower is a play magnet for children with its dramatic theme that inspires imaginative play again and again. The richly varied play activities on all levels of the play unit inspire children to play, move and imagine together, again and again. The socialise-and-explore play features on ground level, with a wealth of tactile moving play

details inspire countless dramatic play scenarios. These tactile play details connect children in play under, around and on the play unit. The elevated level of the platform is reachable by an accessible stairway, and up here the view and wild fireman's pole appeal to dare-devils with its thrilling ride to the ground. Additional egress variation is offered with a

curved slide and banister bars. A multitude of ways in, with climbing wall, stairs and ladders makes the unit richly varied in play challenge and thrill. These are known elements in attracting and keeping children in the playground, and not least, making them visit the playground again and again.



Fire Station with Hose Tower

PCM52221



Rope climber

Physical: children develop cross coordination when climbing and upper body muscles when pulling themselves upwards in the support ropes. **Social-Emotional:** place for meeting, taking a break and socializing.



Theme

Cognitive: suggests a theme and supports dramatic play, which stimulates language and communication skills.



Banister bars

Physical: supports coordination, arm and core muscles. Landing strengthens bone density **Social-Emotional:** turn-taking and risk-taking.



Curved slide

Physical: develops spatial awareness, sense of balance and trains core muscles when sitting upright going down. **Social-Emotional:** empathy stimulated by turn-taking.



Megaphone

Social-Emotional: inspires communication and turn-taking skills. **Cognitive:** distortion of sound evokes curiosity and stimulates an understanding of cause and effect.



Turnable Maze Panel

Social-Emotional: cooperating on completing the maze trains turn-taking and cooperation skills. **Cognitive:** figuring out how to turn the maze to make the balls fit into the goals trains logical thinking skills. The game character supports understanding and strategic thinking. **Creative:** leaving the balls in new positions allow children to leave a mark in the playground.



Fireman's pole

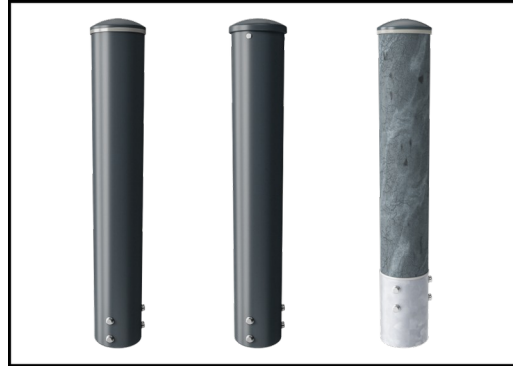
Physical: supports coordination, arm and core muscles. Landing strengthens bone density. **Social-Emotional:** turn-taking and risk-taking.

Fire Station with Hose Tower

PCM52221



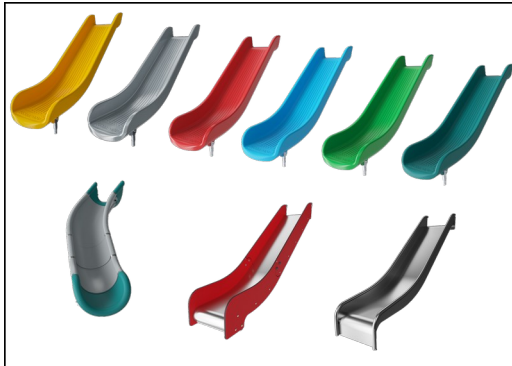
Panels of 19mm EcoCore™. EcoCore™ is a highly durable, eco-friendly material, which is not only recyclable after use but also consists of a core produced from 100% recycled material.



Main posts with hot dip galvanised steel footings are available in different materials: Pre-galvanised inside and outside with powder coated top finish steel posts. Lead free aluminum with color anodised top finish. TexMade posts of 95% post-consumer recycled PE and textile waste.



All decks are supported by unique designed low-carbon aluminum profiles with multiple attachment options. The grey colored molded decks are made of 75% post-consumer waste PP material with a non-skid pattern and texture surface.



The slides can be chosen in six different colours and three materials: Straight or curved one-piece moulded PE slides, made from 33% recycled post-consumer materials in different colours. Combined EcoCore™ sides and stainless-steel. Full stainless steel in one piece design for more vandalism proof solutions.



Ropes of UV-stabilized PES rope strands with inner steel cable reinforcement. The polyester yarn is made from +95% post-consumer materials and is inductively melted onto each strand.



KOMPAN GreenLine versions are designed with ultimate environmentally friendly materials with lowest possible CO2e emission factor. TexMade post, EcoCore™ panels of 95% post-consumer recycled waste and molded PP decks.

Item no. PCM52221-0901

Installation Information

| | |
|--------------------------|--------------------------|
| Max. fall height | 238 cm |
| Safety surfacing area | 54.5 m ² |
| Total installation time | 33.8 |
| Excavation volume | 0.73 m ³ |
| Concrete volume | 0.12 m ³ |
| Footing depth (standard) | 90 cm |
| Shipment weight | 1,186 kg |
| Anchoring options | Surface ✓ In-ground ✓ |

Warranty Information

| | |
|-----------------------|----------|
| EcoCore HDPE | Lifetime |
| Post | 10 years |
| PP Decks | 10 years |
| Ropes & Nets | 10 years |
| Spare Parts Guarantee | 10 years |

Sustainability Data

PCM52221



| Cradle to Gate A1-A3 | Total CO ₂ emission | CO ₂ e/kg | Recycled materials |
|----------------------|--------------------------------|-------------------------|--------------------|
| | kg CO ₂ e | kg CO ₂ e/kg | % |
| PCM52221-0901 | 1,516.44 | 1.82 | 70.38 |

The overall framework applied for these factors is the Environmental Product Declaration (EPD), which quantifies "environmental information on the life cycle of a product and enable comparisons between products fulfilling the same function" (ISO, 2006). This follows the structure and applies a Life-Cycle Assessment approach to the entire Product stage from raw material through manufacturing (A1-A3))

Kompan A/S
 C.F. Tietgens Boulevard 32C
 DK-5220 Odense SØ
 Denmark



Verification of CO₂ calculation of: Play systems



Data version no. 2023-10-05

The CO₂ calculation and data are in compliance with the principles of a carbon footprint impact according to the GHG protocol (Greenhouse Gas Protocol), Scope 3, cradle to gate related to all individual components in the product category: "Play systems" represented by item no.: PCM200321-0950.

(Scope 3 emissions include emission sources in the upstream and downstream value chain).

Date: 30. October 2023 | Valid until: 30. October 2025

Verified by:

Julie Marie Vejsgaard Larsen, LCA & EPD Consultant

Verification based on report: Validation of CO₂ calculation of 9 categories of Kompan product line, version 1.0, prepared by: Bureau Veritas HSE, Denmark: Julie M. V. Larsen.

Publication date: 30. October 2023

By Bureau Veritas HSE
 www.bureauveritas.dk
 +45 7731 1000

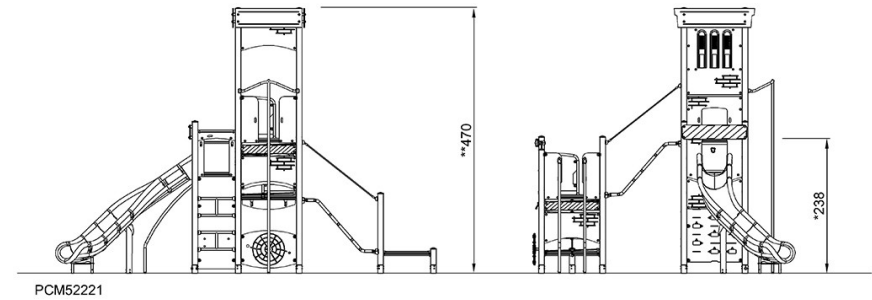
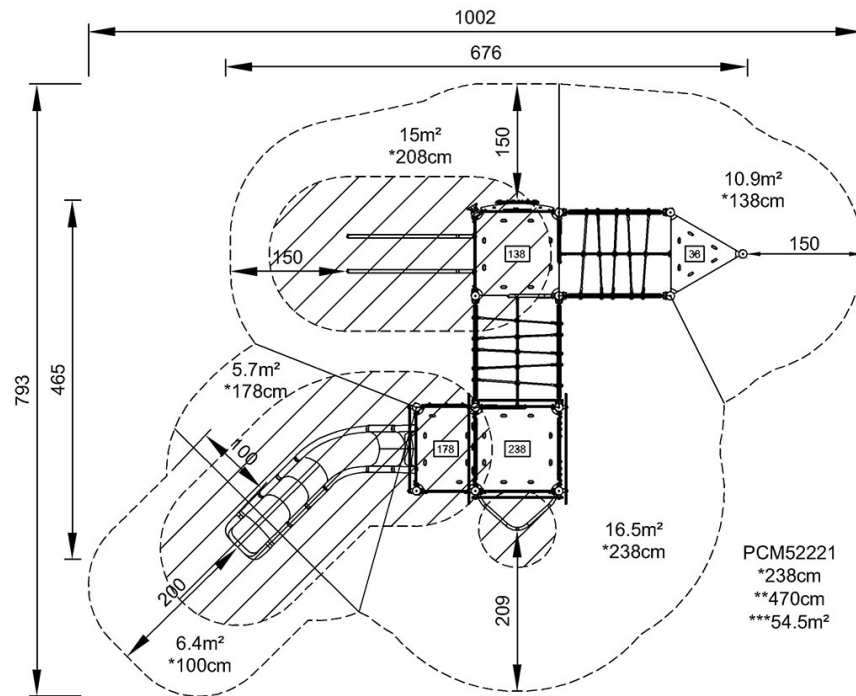


Fire Station with Hose Tower

PCM52221

* Max fall height | ** Total height | *** Safety surfacing area

* Max fall height | ** Total height



[Click to see TOP VIEW](#)

[Click to see SIDE VIEW](#)