

# Manhattan Mega Deck




PCX3001

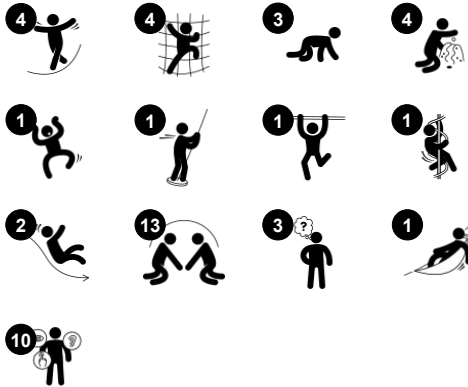


Here comes the ultimate play experience for preschoolers! The Manhattan Mega Deck delivers maximum play value with its maze of play activities. Supporting children's development cognitively, socially and of course physically. The desk, mailbox and flower panel are nice frames for dramatic play, support story telling and language skills. The panel with

faces supports emotional development, whereas the geometric shapes and numbers support educational learning and encourage children to learn about the world around them. Muscle strength is trained when climbing up the rappels or the curly climber. Crawling through the tunnel supports cross coordination, while jumping down the balance beam is

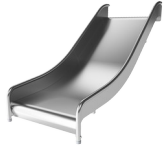
important in terms of building strong bones. Sliding and swaying in the hammock stimulate balance.

Item no. PCX300100-0602	
General Product Information	
Dimensions LxWxH	807x785x357 cm
Age group	2 - 5
Play capacity (users)	48
Colour options	  



# Manhattan Mega Deck

PCX3001



## Wide slide

**Physical:** sliding develops spatial awareness and a sense of balance. Furthermore, the core muscles are trained when sitting upright going down. **Social-Emotional:** invites socializing, supports parent-child and peer-to-peer play. **Cognitive:** young children develop their understanding of space, speed and distances when sliding down quickly.



## Rock climber

**Physical:** supports cross coordination and leg, arm and hand strength. **Social-Emotional:** the inclination makes climbing feel secure, especially for younger children.



## Hammock

**Physical:** coordination and sense of balance when swaying. **Social-Emotional:** meeting, pushing friends gently back and forth, turn-taking. **Cognitive:** for toddlers cause and effect understanding.



## Mailbox panel

**Social-Emotional:** spurs group play and conversations with its two-sidedness. **Cognitive:** suggests a theme and supports dramatic play, which stimulates language and communication skills.



## Curly climber

**Physical:** coordination and proprioception are supported when placing arms and legs correctly for going down. Sense of balance when rotating. Arm muscles for holding tight. **Social-Emotional:** empathy stimulated by turn-taking. **Cognitive:** logical thinking when placing arms and legs right for rotating downwards.



## Talk tube

**Social-Emotional:** encourages communication and social interaction. **Cognitive:** evokes curiosity and stimulates an understanding of cause and effect and object permanence: objects and persons exist also when out of sight.



## Tunnel

**Physical:** the children crawl through the tunnel, developing motor skills such as cross-body coordination and proprioception. **Social-Emotional:** turn-taking when passing each other.

# Manhattan Mega Deck

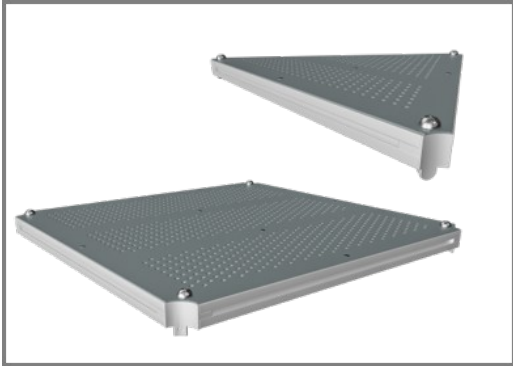
PCX3001



All steel components are made of high quality materials. The posts have an alloy with improved tensile and yield strength according to the NYCP material specification. The painted aluminum post caps are riveted to the top of the post.

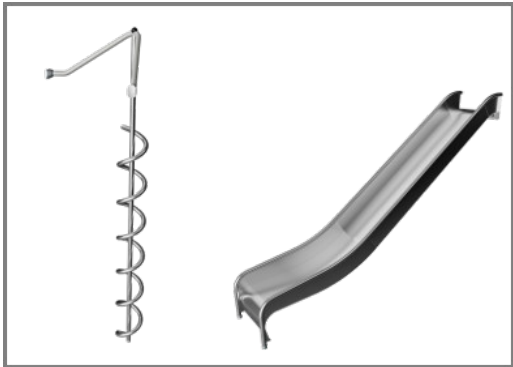


All panels and one-piece welded steel grids are made of low carbon steel and corrosion treated by hot dip galvanization or metallization with a minimum thickness according to NYCP material specification.



All decks are made of perforated low carbon steel plates supported by aluminum profiles with no unsupported area larger than four square feet. After metallization the decks are coated with a polyurea non-slip surface which provides extremely good wear and tear resistance.

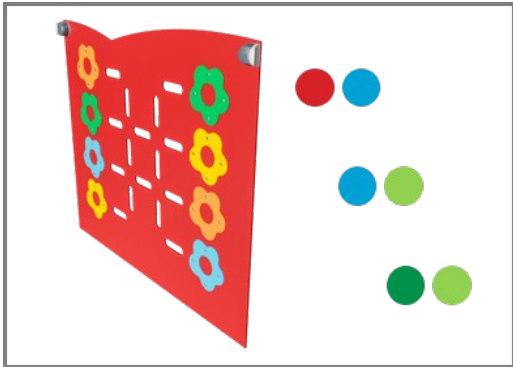
Item no. PCX300100-0602	
Installation Information	
Max. fall height	206 cm
Safety surfacing area	98.2 m²
Total installation time	48.1
Excavation volume	0.75 m³
Concrete volume	0.08 m³
Footing depth (standard)	60 cm
Shipment weight	2,484 kg
Anchoring options	In-ground ✓
Warranty Information	
HPL decks	15 years
Painted steel panels	10 years
Post	10 years
Ropes & nets	10 years
Spare parts guaranteed	10 years



The stainless steel activities are made of high quality stainless steel. The steel is glass blasted after manufacturing to ensure a smooth gliding surface.



Climbing Grips are a KOMPAN customized design, based on professionally designed climbing grips for optimal play value. The base material is polyester.



The products are designed in three different standard color combinations: Red and light blue, Light blue and lime green, Green and lime green. The layouts of the play structures can be customized through the KOMPAN Variant Team.

Elevated activities 11	Accessible elevated activities	Accessible ground level activities	Accessible ground level play types
Present	11	4	3
Required	6	4	3

**CSA  
Z614**  
compliant

# Sustainability Data

PCX3001



Cradle to Gate A1-A3	Total CO <sub>2</sub> emission	CO <sub>2</sub> e/kg	Recycled materials
	kg CO <sub>2</sub> e	kg CO <sub>2</sub> e/kg	%
PCX300100-0602	5,301.99	3.01	47.99

The overall framework applied for these factors is the Environmental Product Declaration (EPD), which quantifies "environmental information on the life cycle of a product and enable comparisons between products fulfilling the same function" (ISO, 2006). This follows the structure and applies a Life-Cycle Assessment approach to the entire Product stage from raw material through manufacturing (A1-A3))

## Kompan A/S

C.F. Tietgens Boulevard 32C  
DK-5220 Odense SØ  
Denmark



## Verification of CO<sub>2</sub> calculation of: Play systems



Data version no. 2023-10-05

The CO<sub>2</sub> calculation and data are in compliance with the principles of a carbon footprint impact according to the GHG protocol (Greenhouse Gas Protocol), Scope 3, cradle to gate related to all individual components in the product category: "Play systems" represented by item no.: PCM200321-0950.

(Scope 3 emissions include emission sources in the upstream and downstream value chain).

**Date: 30. October 2023 | Valid until: 30. October 2025**

**Verified by:**

Julie Marie Vejsgaard Larsen, LCA & EPD Consultant

Verification based on report: Validation of CO<sub>2</sub> calculation of 9 categories of Kompan product line, version 1.0, prepared by: Bureau Veritas HSE, Denmark: Julie M. V. Larsen.

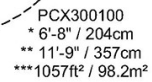
**Publication date: 30. October 2023**

By Bureau Veritas HSE  
www.bureauveritas.dk  
+45 7731 1000



## PCX3001

\* Max fall height | \*\* Total height | \*\*\* Safety surfacing area



5 / 02/05/2025

PCX300100

*Data is subject to change without prior notice.*