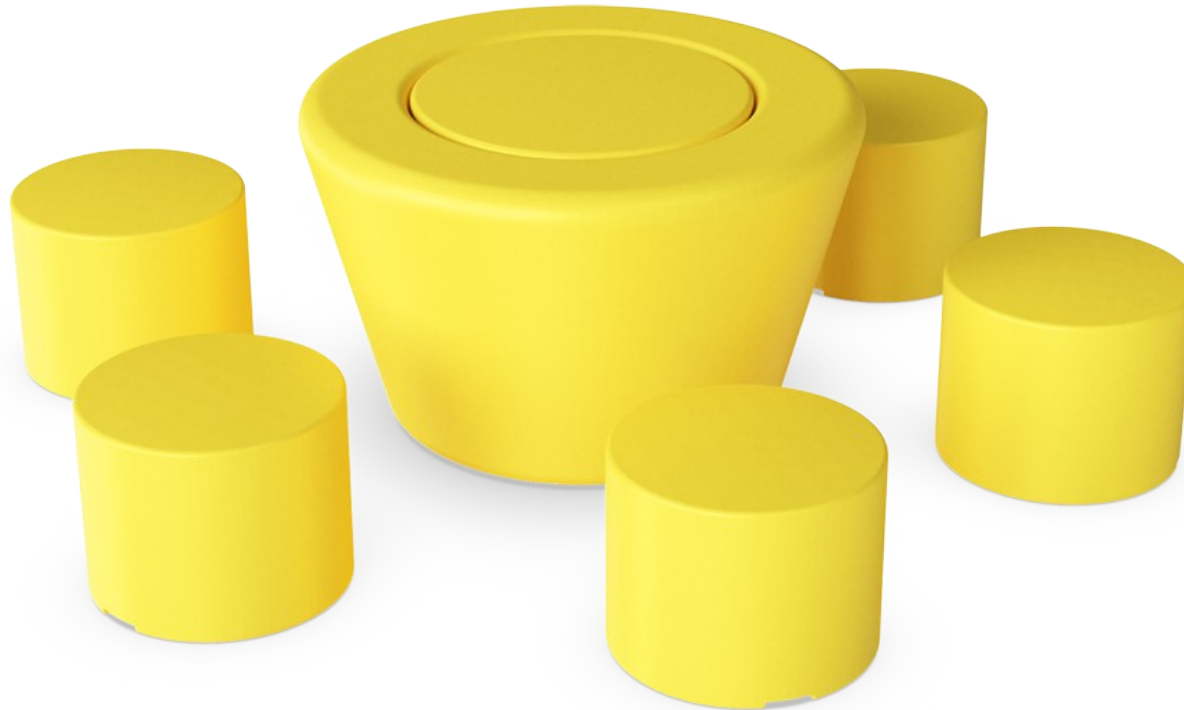


LOOP Picnic 500

TPP29620



Item no. TPP29620-0005

General Product Information

Dimensions LxWxH 250x224x70 cm

Age group

Play capacity (users)

Colour options



Sit, enjoy and talk! The combination of Loop Cone at the centre of 6 surrounding HopOp 500 opens up new opportunities for creating small, informal seating groups. A table-and-bench set where form, material and colour unite to form fun furniture. LOOP Picnic HopOp 500 constitutes an alternative to traditional table-and-bench sets.

LOOP Picnic 500

TPP29620



The Loops modular elements are made of rotation molded polyethylene (PE) with a thickness of 6-7mm. The Loops are UV-resistant, have excellent impact strength and are usable within a large temperature span.



The product molds are textured through abrasive blasting, enhancing surface friction and reducing slipperiness ensuring a safer experience.



The Loops come in 10 standard colors, offering a variety of options to personalize your product and ensure a perfect fit for your intended space.

Item no. TPP29620-0005

Installation Information

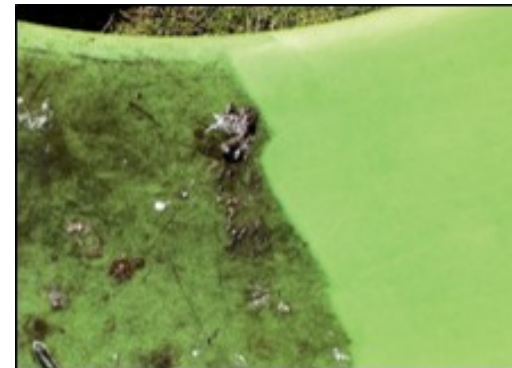
| | |
|--------------------------|--------------------------|
| Total installation time | 0.0 |
| Excavation volume | 0.00 m ³ |
| Concrete volume | 0.00 m ³ |
| Footing depth (standard) | 0 cm |
| Shipment weight | 62 kg |
| Anchoring options | In-ground ✓ Surface ✓ |



The Loops are available in a recycled version made from 100% recycled materials. 85% of the plastic is sourced from internal waste and production surplus, while remaining 15% comes from polyethylene bags. The recycled version comes in an anthracite color.



The Loops can be anchored to the ground by filling them with water or sand using integrated plugs. Alternatively, they can be secured using surface or ground brackets.



This product withstands most cleaning agents and chemicals and can be cleaned using a high-pressure cleaner. The color can be revived using vinyl cleaner or similar.