


LOOP Table, inground

TPP29506



The LOOP circle offers a number of seating- and utility options. Loop Table adds a new set of functions, creating a small, colourful bench-and-table set.

Ideal for schools, playgrounds and other urban recreational spaces.

Item no. TPP29506-0001	
General Product Information	
Dimensions LxWxH	70x70x73 cm
Age group	
Play capacity (users)	
Colour options	

LOOP Table, inground

TPP29506



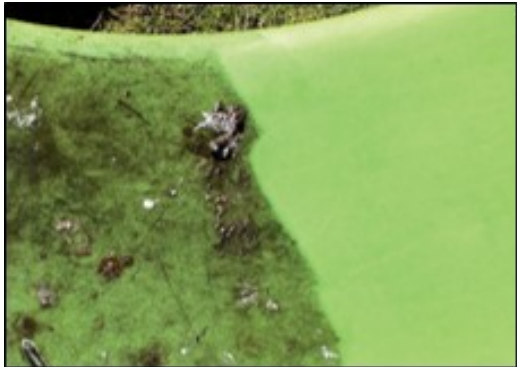
The Loops modular elements are made of rotation molded polyethylene (PE) with at thickness of 6-7mm. The Loops are UV-resistant, have excellent impact strength and are usable within a large temperature span.



The Loops come in 10 standard colors, offering a variety of options to personalize your product and ensure a perfect fit for your intended space.



The Loops are available in a recycled version made from 100% recycled materials. 85% of the plastic is sourced from internal waste and production surplus, while remaining 15% comes from polyethylene bags. The recycled version comes in an anthracite color.



This product withstands most cleaning agents and chemicals and can be cleaned using a high-pressure cleaner. The color can be revived using vinyl cleaner or similar.

Item no. TPP29506-0001	
Installation Information	
Total installation time	0.0
Excavation volume	0.00 m³
Concrete volume	0.00 m³
Footing depth (standard)	0 cm
Shipment weight	8 kg
Anchoring options	In-ground ✓
Warranty Information	
Supplier warranty applies	