

Brooklyn Mega Deck




PCX2001

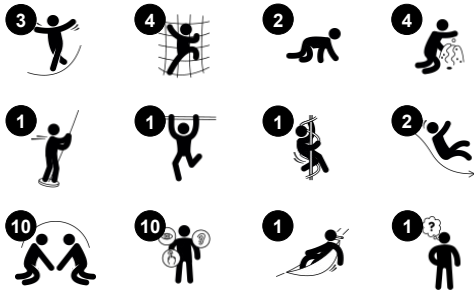


The Brooklyn Mega Deck creates a great frame of play for many children – and on more levels. Different access, egress and ground level activities are provided to ensure a high level of varied play benefits for everyone. Social interaction and language skills are stimulated when communicating from the bridge or through the window with peers on ground level,

when using the talk tubes, sliding together or playing dramatic play using the desk and mailbox panel. Besides supporting social and cognitive skills, the structure supports physical skills, such as cross coordination when walking the balance beam, climbing up the pipe ladder or the inclined wall. Cross coordination trains the cooperation of left and right hemispheres of

the brain, which is necessary for cognitive tasks such as being able to read.

Item no. PCX200100-0602	
General Product Information	
Dimensions LxWxH	807x647x357 cm
Age group	2 - 5
Play capacity (users)	36
Colour options	  



Brooklyn Mega Deck

PCX2001



Desk with bowl and sieve

Social-Emotional: children can gather and store materials, cooperate and take a break together. **Creative:** sand can be shifted through the sieve, for understanding of cause and effect and object permanence.



Talk tube

Social-Emotional: encourages communication and social interaction. **Cognitive:** evokes curiosity and stimulates an understanding of cause and effect and object permanence: objects and persons exist also when out of sight.



Mailbox panel

Social-Emotional: spurs group play and conversations with its two-sidedness. **Cognitive:** suggests a theme and supports dramatic play, which stimulates language and communication skills.



Curly climber

Physical: coordination and proprioception are supported when placing arms and legs correctly for going down. Sense of balance when rotating. Arm muscles for holding tight. **Social-Emotional:** empathy stimulated by turn-taking. **Cognitive:** logical thinking when placing arms and legs right for rotating downwards.



Hammock

Physical: coordination and sense of balance when swaying. **Social-Emotional:** meeting, pushing friends gently back and forth, turn-taking. **Cognitive:** for toddlers cause and effect understanding.



Wide slide

Physical: sliding develops spatial awareness and a sense of balance. Furthermore, the core muscles are trained when sitting upright going down. **Social-Emotional:** invites socializing, supports parent-child and peer-to-peer play. **Cognitive:** young children develop their understanding of space, speed and distances when sliding down quickly.



Rock climber

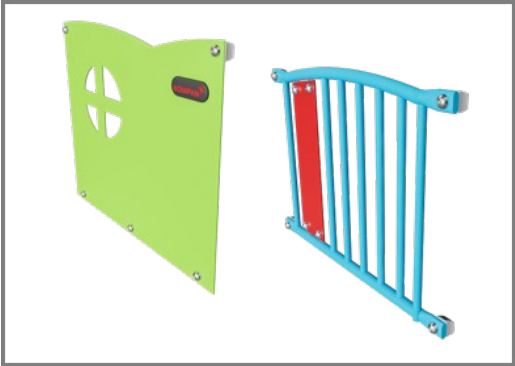
Physical: supports cross coordination and leg, arm and hand strength. **Social-Emotional:** the inclination makes climbing feel secure, especially for younger children.

Brooklyn Mega Deck

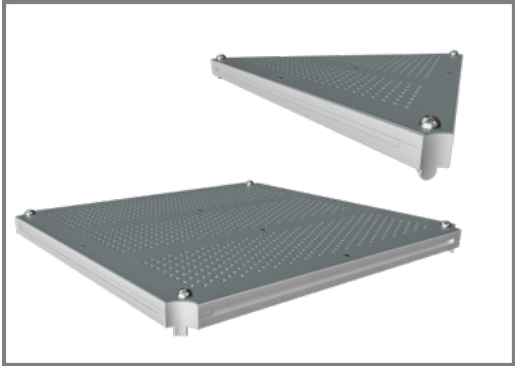
PCX2001



All steel components are made of high quality materials. The posts have an alloy with improved tensile and yield strength according to the NYCP material specification. The painted aluminum post caps are riveted to the top of the post.

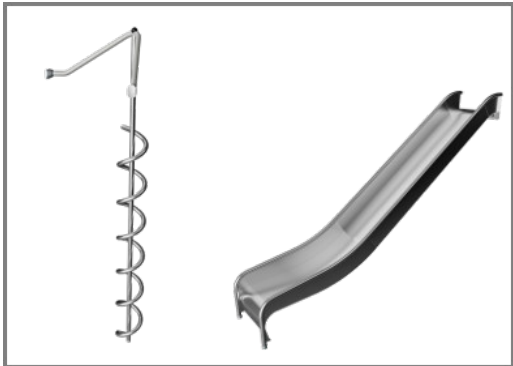


All panels and one-piece welded steel grids are made of low carbon steel and corrosion treated by hot dip galvanization or metallization with a minimum thickness according to NYCP material specification.



All decks are made of perforated low carbon steel plates supported by aluminum profiles with no unsupported area larger than four square feet. After metallization the decks are coated with a polyurea non-slip surface which provides extremely good wear and tear resistance.

Item no. PCX200100-0602	
Installation Information	
Max. fall height	206 cm
Safety surfacing area	82.1 m ²
Total installation time	35.8
Excavation volume	0.58 m ³
Concrete volume	0.08 m ³
Footing depth (standard)	60 cm
Shipment weight	1,820 kg
Anchoring options	In-ground ✓
Warranty Information	
HPL decks	15 years
Painted steel panels	10 years
Post	10 years
Ropes & nets	10 years
Spare parts guaranteed	10 years



The stainless steel activities are made of high quality stainless steel. The steel is glass blasted after manufacturing to ensure a smooth gliding surface.



Climbing Grips are a KOMPAN customized design, based on professionally designed climbing grips for optimal play value. The base material is polyester.



The product is designed in three different standard color combinations: Red and light blue, Light blue and lime green, Green and lime green. The layouts of the play structures can be customized through the KOMPAN Variant Team.

Elevated activities 4	Accessible elevated activities	Accessible ground level activities	Accessible ground level play types
Present	4	2	2
Required	2	1	1

**CSA
Z614**
compliant

Sustainability Data

PCX2001



Cradle to Gate A1-A3	Total CO ₂ emission	CO ₂ e/kg	Recycled materials
	kg CO ₂ e	kg CO ₂ e/kg	%
PCX200100-0602	3,902.72	3.08	47.97

The overall framework applied for these factors is the Environmental Product Declaration (EPD), which quantifies "environmental information on the life cycle of a product and enable comparisons between products fulfilling the same function" (ISO, 2006). This follows the structure and applies a Life-Cycle Assessment approach to the entire Product stage from raw material through manufacturing (A1-A3))

Kompan A/S

C.F. Tietgens Boulevard 32C
DK-5220 Odense SØ
Denmark



Verification of CO₂ calculation of: Play systems



Data version no. 2023-10-05

The CO₂ calculation and data are in compliance with the principles of a carbon footprint impact according to the GHG protocol (Greenhouse Gas Protocol), Scope 3, cradle to gate related to all individual components in the product category: "Play systems" represented by item no.: PCM200321-0950.

(Scope 3 emissions include emission sources in the upstream and downstream value chain).

Date: 30. October 2023 | Valid until: 30. October 2025

Verified by:

Julie Marie Vejsgaard Larsen, LCA & EPD Consultant

Verification based on report: Validation of CO₂ calculation of 9 categories of Kompan product line, version 1.0, prepared by: Bureau Veritas HSE, Denmark: Julie M. V. Larsen.

Publication date: 30. October 2023

By Bureau Veritas HSE
www.bureauveritas.dk
+45 7731 1000

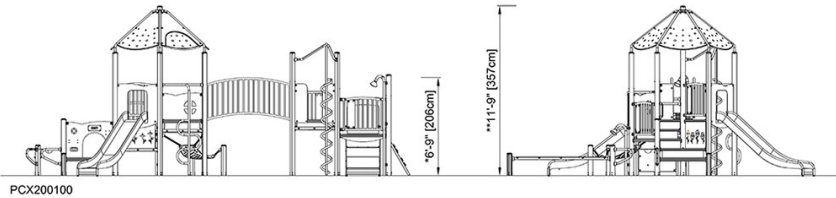
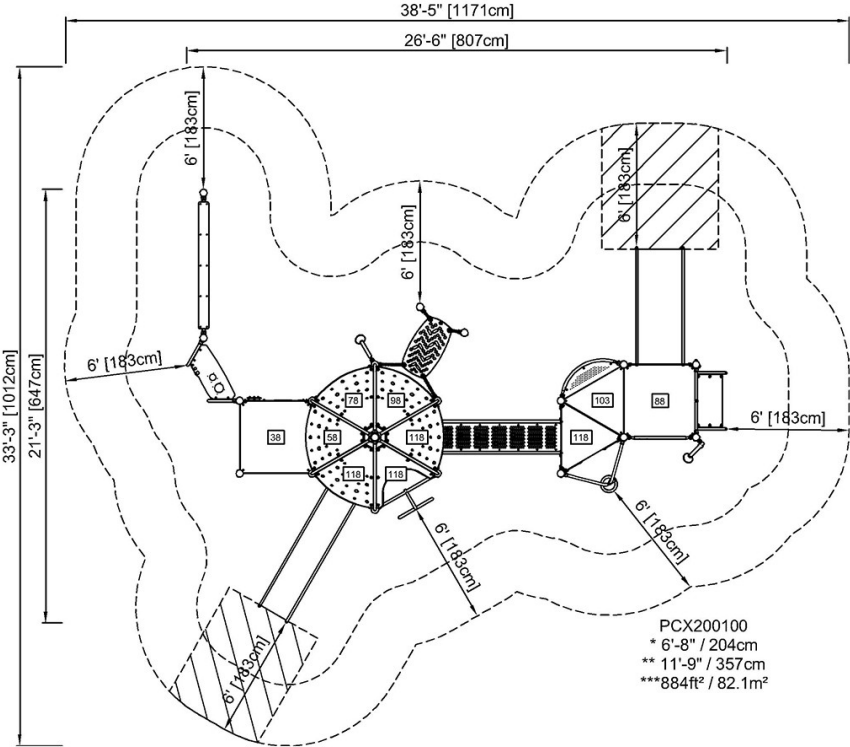


Brooklyn Mega Deck

PCX2001

* Max fall height | ** Total height | *** Safety surfacing area

* Max fall height | ** Total height



[Click to see TOP VIEW](#)

[Click to see SIDE VIEW](#)