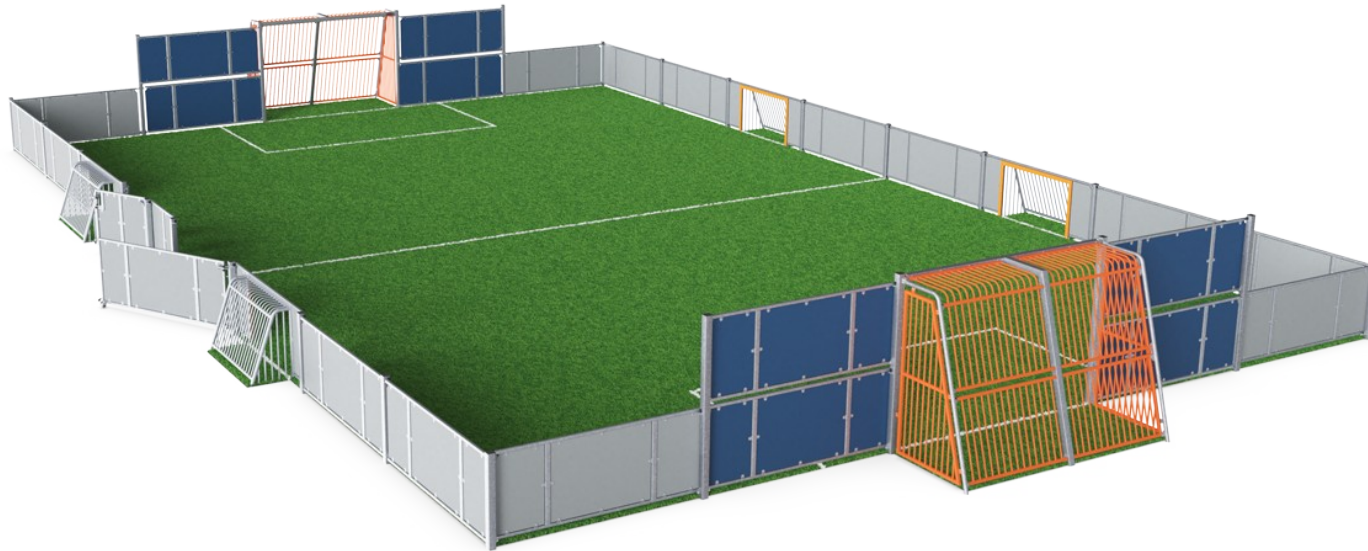


MUGA, 14x23m, Low 1m, Plate Design

FRE600302

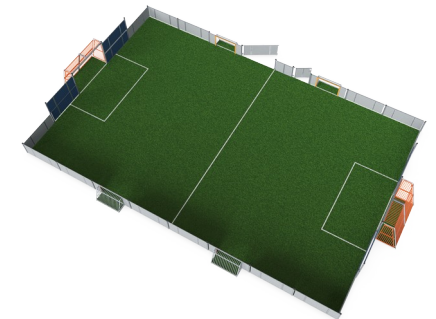
KOMPANI
Let's play



Item no. FRE600302-0904

General Product Information

| | |
|-----------------------|------------------|
| Dimensions LxWxH | 2254x1411x210 cm |
| Age group | 3+ |
| Play capacity (users) | - |
| Colour options | |



The EcoCore™ is a highly durable, eco-friendly material, which is not only recyclable after use, but also consists of a core produced from 100% recycled material. The core has a thickness of 15 mm and is representing 80% of the total material. The fully flat inside gives the best bounce experience when playing, this flat wall becomes a part of the game and means

the game can flow whilst adding another dimension that can challenge and develop players' tactical vision of the game. The 3 m x 2 m Multi Goal follows the goal size of FIFA Futsal and IHF Handball regulations.



MUGA, 14x23m, Low 1m, Plate Design

FRE600302



The HDPE panels are made with +95% recycled post-consumer material from e.g., food packing waste. Available in Night Sky Blue, Grey and Orange but multiple colours can be requested. To increase the design and play value you can also choose HDPE panels with patterns or logo's engraved.



All steel components are manufactured from carbon steel, welding's according EN ISO 5817 & Hot dip galvanised (HDG) according to ISO1461. This process ensures good protection in all circumstances.



The Mini Goals are 147 x 90cm and the distance between the vertical Ø 21.3mm tubes is 68mm, small enough to keep all balls in play. The goal is framed with coloured HDPE strips to highlight the target.

Item no. FRE600302-0904

Installation Information

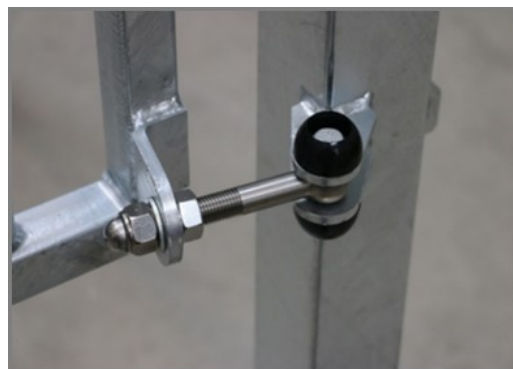
| | |
|--------------------------|--------------------------|
| Max. fall height | 0 cm |
| Safety surfacing area | 0.0 m ² |
| Total installation time | 64.9 |
| Excavation volume | 2.37 m ³ |
| Concrete volume | 1.64 m ³ |
| Footing depth (standard) | 85 cm |
| Shipment weight | 3,076 kg |
| Anchoring options | In-ground ✓ Surface ✓ |

Warranty Information

| | |
|------------------------|----------|
| EcoCore HDPE | Lifetime |
| HDG post | Lifetime |
| Spare parts guaranteed | 10 years |



Each panel has 4 Thermoplastic Vulcanizates plugs connecting the panels to the posts. The plugs reduce the vibration and therefore reduce the noise level. The plugs will also simplify installation as they come with pre-assembled nuts.



The hinges on the entrance gate are 16mm and made of Stainless Steel, the handle can be accessed from both inside and outside of the pitch but is constructed in such a way that it remains fully flat on the inside of the MUGA.

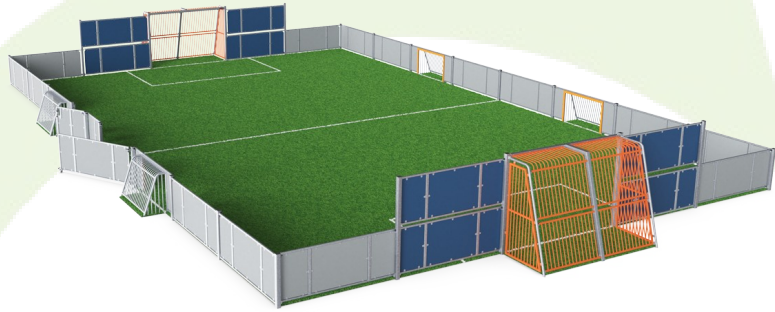


The HDPE panels are connected with M8 stainless steel bolts to 42.5 x 40 x 3mm welded flanges. These connections are not visible from the inside and create a strong and safe connection.



Sustainability Data

FRE600302



| Cradle to Gate A1-A3 | Total CO ₂ emission | CO ₂ e/kg | Recycled materials |
|-----------------------|--------------------------------|-------------------------|--------------------|
| | kg CO ₂ e | kg CO ₂ e/kg | % |
| FRE600302-0904 | 5,034.00 | 1.90 | 65.51 |

The overall framework applied for these factors is the Environmental Product Declaration (EPD), which quantifies "environmental information on the life cycle of a product and enable comparisons between products fulfilling the same function" (ISO, 2006). This follows the structure and applies a Life-Cycle Assessment approach to the entire Product stage from raw material through manufacturing (A1-A3))

Kompan A/S
 C.F. Tietgens Boulevard 32C
 DK-5220 Odense SØ
 Denmark



Verification of CO₂ calculation of: Sport



Data version no. 2023-10-05

The CO₂ calculation and data are in compliance with the principles of a carbon footprint impact according to the GHG protocol (Greenhouse Gas Protocol), Scope 3, cradle to gate related to all individual components in the product category: "Sport" represented by item no: FRE600202-0901.

(Scope 3 emissions include emission sources in the upstream and downstream value chain).

Date: 30. October 2023 | Valid until: 30. October 2025

Verified by:

Julie Marie Vejsgaard Larsen, LCA & EPD Consultant

Verification based on report: Validation of CO₂ calculation of 9 categories of Kompan product line, version 1.0, prepared by: Bureau Veritas HSE, Denmark: Julie M. V. Larsen.

Publication date: 30. October 2023

By Bureau Veritas HSE
 www.bureauveritas.dk
 +45 7731 1000

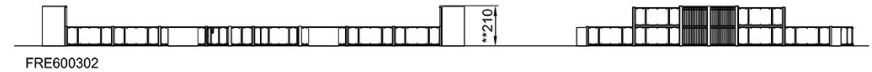
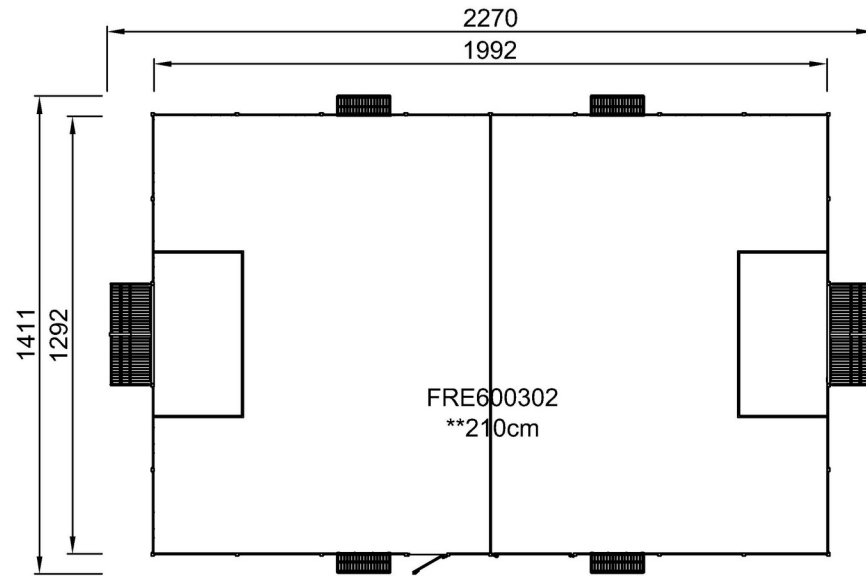


MUGA, 14x23m, Low 1m, Plate Design

FRE600302

* Max fall height | ** Total height | *** Safety surfacing area

* Max fall height | ** Total height



[Click to see TOP VIEW](#)

[Click to see SIDE VIEW](#)