

Suspension Bridge



NRO870

KOMPAN
Let's play



The Suspension Bridge is fun and helps with children's development at the same time. Young children learn to maintain their balance, strengthen bone density and develop their core muscles. The bridge is fun to run or jump across by itself, or as part of a larger group of play items. It is made of natural Robinia timber, which provides an organic structure that can

either blend into or stand out from your surroundings. Children can touch and feel the timber while playing, observing how nature inspiration interacts with the built environment.

Item no. NRO870-1001	
General Product Information	
Dimensions LxWxH	215x126x140 cm
Age group	2+
Play capacity (users)	2
Colour options	 



Suspension Bridge

NRO870



Trekking bridge

Physical: the wobbly bridge trains balance and coordination as well as spatial awareness: when children cross the bridge by running or jumping. **Social-Emotional:** turn-taking and consideration when passing each other. Cooperation and socialising with others in and around the bridge.



Suspension Bridge

NRO870



All organic Robinia products by KOMPAN are made of Robinia wood which is sourced from sustainable plantation farms. On request it can be supplied as FSC® Certified (FSC® C004450).

The Robinia wood can be supplied as untreated raw wood or painted with a brown coloured transparent pigment that maintains the golden wood colour of the wood.

Item no. NRO870-1001	
Installation Information	
Max. fall height	30 cm
Safety surfacing area	19.4 m²
Total installation time	6.0
Excavation volume	0.28 m³
Concrete volume	0.05 m³
Footing depth (standard)	100 cm
Shipment weight	295 kg
Anchoring options	In-ground ✓ Surface ✓
Warranty Information	
Robinia Wood	15 years
Spare Parts Guarantee	10 years
Stainless Steel Components	Lifetime



Sustainability Data

NRO870



Cradle to Gate A1-A3	Total CO ₂ emission	CO ₂ e/kg	Recycled materials
	kg CO ₂ e	kg CO ₂ e/kg	%
NRO870-1001	48.95	0.22	1.92

The overall framework applied for these factors is the Environmental Product Declaration (EPD), which quantifies "environmental information on the life cycle of a product and enable comparisons between products fulfilling the same function" (ISO, 2006). This follows the structure and applies a Life-Cycle Assessment approach to the entire Product stage from raw material through manufacturing (A1-A3))

Kompan A/S
C.F. Tietgens Boulevard 32C
DK-5220 Odense SØ
Denmark



Verification of CO₂ calculation of: Nature play



Data version no. 2023-10-05

The CO₂ calculation and data are in compliance with the principles of a carbon footprint impact according to the GHG protocol (Greenhouse Gas Protocol), Scope 3, cradle to gate related to all individual components in the product category: "Nature play" represented by item no.: NRO409-0621.

(Scope 3 emissions include emission sources in the upstream and downstream value chain).

Date: 30. October 2023 | Valid until: 30. October 2025
Verified by:

Julie Marie Vejsgaard Larsen, LCA & EPD Consultant

Verification based on report: Validation of CO₂ calculation of 9 categories of Kompan product line, version 1.0, prepared by: Bureau Veritas HSE, Denmark: Julie M. V. Larsen.

Publication date: 30. October 2023

By Bureau Veritas HSE
www.bureauveritas.dk
+45 7731 1000

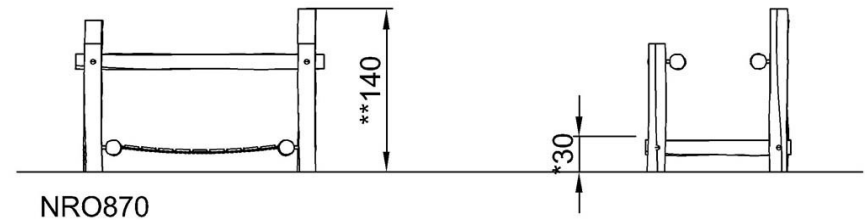
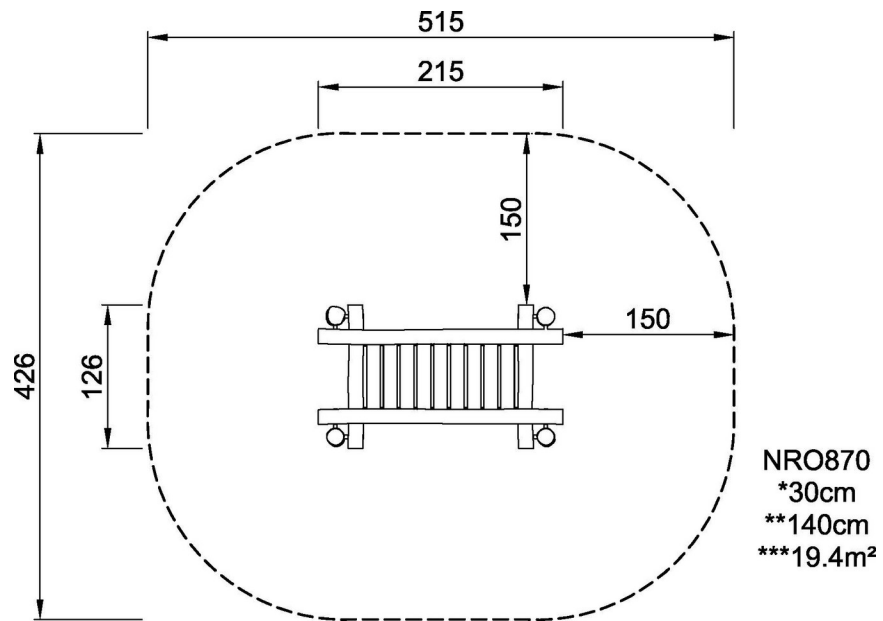


Suspension Bridge

NRO870

* Max fall height | ** Total height | *** Safety surfacing area

* Max fall height | ** Total height



[Click to see TOP VIEW](#)

[Click to see SIDE VIEW](#)