

# LOOP Table, Inground

TPP29506



Item no. TPP29506-0001

## General Product Information

Dimensions LxWxH 70x70x73 cm

Age group

Play capacity (users)

Colour options



The LOOP circle offers a number of seating- and utility options. Loop Table adds a new set of functions, creating a small, colourful bench-and-table set.

Ideal for schools, playgrounds and other urban recreational spaces.

# LOOP Table, Inground

TPP29506



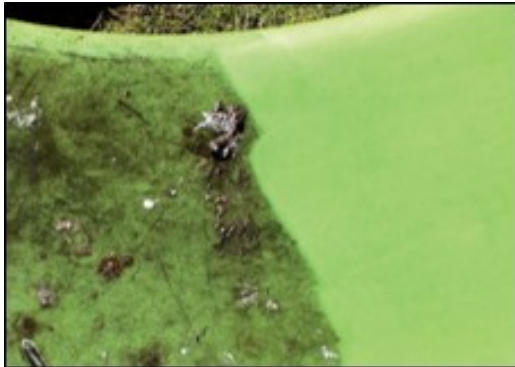
The Loops modular elements are made of rotation molded polyethylene (PE) with a thickness of 6-7mm. The Loops are UV-resistant, have excellent impact strength and are usable within a large temperature span.



The Loops come in 10 standard colors, offering a variety of options to personalize your product and ensure a perfect fit for your intended space.



The Loops are available in a recycled version made from 100% recycled materials. 85% of the plastic is sourced from internal waste and production surplus, while remaining 15% comes from polyethylene bags. The recycled version comes in an anthracite color.



This product withstands most cleaning agents and chemicals and can be cleaned using a high-pressure cleaner. The color can be revived using vinyl cleaner or similar.

Item no. TPP29506-0001

## Installation Information

Total installation time	0.0
Excavation volume	0.00 m <sup>3</sup>
Concrete volume	0.00 m <sup>3</sup>
Footing depth (standard)	0 cm
Shipment weight	8 kg
Anchoring options	In-ground ✓