


Town House with Cafe

PCM52331



Item no. PCM52331-0901	
General Product Information	
Dimensions LxWxH	19'5"x10'2"x11'11"
Age group	2 - 5
Play capacity (users)	20
Color options	



The countless play activities of the Town House with Cafe inspire children to play, move and imagine together, for long, again and again. The socialise-and-explore play features on ground level, with table and bench as well as a wealth of tactile moving play details offer countless dramatic play scenarios. This also connects children in play under, around and on

the play unit. The elevated level of the platform is reachable by an accessible stairway, and up here the view and a nice selection of tactile details attract children to play. The high slide is an attractive and stomach tickling experience which additionally trains the children's spatial awareness, their sense of balance and their core stability. These are important fundamentals

in movement confidence. Thus, this play unit offers physical, social-emotional and cognitive-creative play benefits in one wildly attractive play unit that children will want to visit again and again.

Town House with Cafe

PCM52331



Accessible stairway

Physical: climbing the accessible stairway is for all and supports cross coordination as well as arm and leg muscles. For young children, walking stairs and alternating feet is developed. **Social-Emotional:** room for active breaks and adult helpers. An inclusive space.



Theme

Cognitive: suggests a theme and supports dramatic play, which stimulates language and communication skills.



Balcony

Social-Emotional: the balcony invites meetings and interaction with people on ground level.



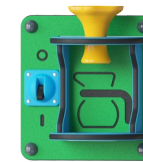
Oven and hob

Social-Emotional: invites cooperation and communication due to the two-sidedness. **Cognitive:** stimulates language and communication skills with its tangible theme. **Creative:** children can leave their mark, placing the oven knobs in different positions.



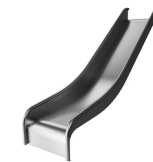
Bench

Social-Emotional: invites socializing and cooperation. Allows for a break with friends.



Coffee Maker

Social-Emotional: trains cooperation and turn-taking as children put materials into the coffee funnel. **Cognitive:** passing materials through the funnel and sieve supports children's logical thinking skills. Toddlers train their object permanence understanding: that materials can still exist when out of sight. Themes support dramatic play, which is known to stimulate language skills.



Slide

Physical: sliding develops spatial awareness and a sense of balance. Furthermore, the core muscles are trained when sitting upright going down. **Social-Emotional:** empathy stimulated by turn-taking.

Town House with Cafe

PCM52331



Panels of 19mm EcoCore™. EcoCore™ is a highly durable, eco friendly material, which is not only recyclable after use, but also consists of a core produced from 100% recycled material.



Main posts with hot dip galvanized steel footing are available in different materials: Pre-galvanized inside and outside with powder coated top finish steel posts. Lead free aluminum with color anodized top finish. TexMade posts of 95% post-consumer recycled PE and textile waste.



All decks are supported by uniquely designed low-carbon aluminum profiles with multiple attachment options. The grey-colored molded decks are made of 75% post-consumer ocean waste PP material with a non-skid pattern and texture surface.

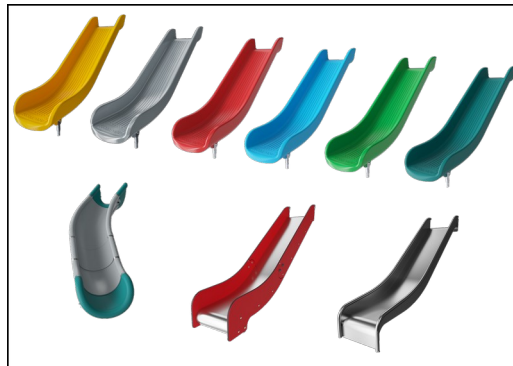
Item no. PCM52331-0901

Installation Information

Max. fall height	4'10"
Safety surfacing area	506ft ²
Total installation time	27.9
Excavation volume	0.71yd ³
Concrete volume	0.03yd ³
Footing depth (standard)	2'11"
Shipment weight	1949lbs
Anchoring options	Surface ✓ In-ground ✓

Warranty Information

EcoCore HDPE	Lifetime
Hollow PE Parts	10 Years
Post	10 Years
PP Decks	10 Years
Spare Parts Availability	10 Years



The slides can be chosen in six different colors and three materials: Straight or curved one-piece molded PE slides. Combined EcoCore™ sides and stainless steel. Full stainless steel in a one-piece design for more vandalism-proof solutions.



KOMPAN GreenLine versions are constructed with the most environmentally friendly materials with the lowest possible CO2e emission factor. TexMade posts, EcoCore™ panels of 100% post-consumer recycled ocean waste, and molded PP decks.

Elevated activities	Accessible elevated activities	Accessible ground level activities	Accessible ground level play types
Present			
Required			

Sustainability Data

PCM52331



Cradle to Gate A1-A3	Total CO ₂ emission	CO ₂ e/kg	Recycled materials
	kg CO ₂ e	kg CO ₂ e/kg	%
PCM52331-0901	1,004.00	1.49	73.89

The overall framework applied for these factors is the Environmental Product Declaration (EPD), which quantifies "environmental information on the life cycle of a product and enable comparisons between products fulfilling the same function" (ISO, 2006). This follows the structure and applies a Life-Cycle Assessment approach to the entire Product stage from raw material through manufacturing (A1-A3))

Kompan A/S
 C.F. Tietgens Boulevard 32C
 DK-5220 Odense SØ
 Denmark



Verification of CO₂ calculation of: Play systems



Data version no. 2023-10-05

The CO₂ calculation and data are in compliance with the principles of a carbon footprint impact according to the GHG protocol (Greenhouse Gas Protocol), Scope 3, cradle to gate related to all individual components in the product category: "Play systems" represented by item no.: PCM200321-0950.

(Scope 3 emissions include emission sources in the upstream and downstream value chain).

Date: 30. October 2023 | Valid until: 30. October 2025

Verified by:

Julie Marie Vejsgaard Larsen, LCA & EPD Consultant

Verification based on report: Validation of CO₂ calculation of 9 categories of Kompan product line, version 1.0, prepared by: Bureau Veritas HSE, Denmark: Julie M. V. Larsen.

Publication date: 30. October 2023

By Bureau Veritas HSE
 www.bureauveritas.dk
 +45 7731 1000



Town House with Cafe

PCM52331

* Max fall height | ** Total height | *** Safety surfacing area

* Max fall height | ** Total height

[Click to see TOP VIEW](#)

[Click to see SIDE VIEW](#)