

# LOOP Corner

TPP29520

产品编号 TPP29520-0001

## 产品信息概览

长宽高尺寸 140x140x40 cm

适用年龄段

容纳人数

颜色选择



90 度的 Loop Corner 与 Loop Line 相结合，可划分出一个球场或沙坑，同时还可提供座位。Loop Corner 还可设计成多种不同形状的长凳。例如，4 个模块可组合成一个正方形，而 3 个 Loop Arc 模块可组合成一个圆形。

# LOOP Corner

TPP29520



The Loops modular elements are made of rotation molded polyethylene (PE) with a thickness of 6-7mm. The Loops are UV-resistant, have excellent impact strength and are usable within a large temperature span.



The product molds are textured through abrasive blasting, enhancing surface friction and reducing slipperiness ensuring a safer experience.



The Loops come in 10 standard colors, offering a variety of options to personalize your product and ensure a perfect fit for your intended space.

产品编号 TPP29520-0001

## 安装信息

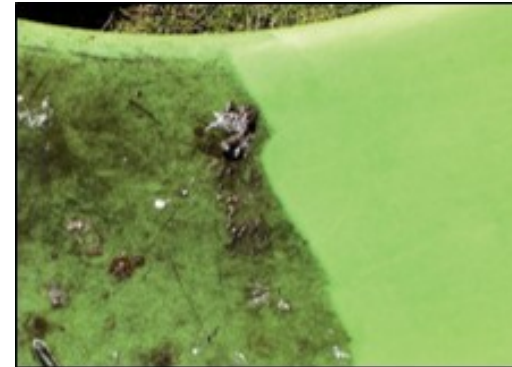
安装总时长	0.0
开挖量	0.00 m <sup>3</sup>
混凝土使用量	0.00 m <sup>3</sup>
标准入地深度	0 cm
运输重量	22 kg
固定选项	入地 ✓ 地表 ✓



The Loops are available in a recycled version made from 100% recycled materials. 85% of the plastic is sourced from internal waste and production surplus, while remaining 15% comes from polyethylene bags. The recycled version comes in an anthracite color.



The Loops can be anchored to the ground by filling them with water or sand using integrated plugs. Alternatively, they can be secured using surface or ground brackets.



This product withstands most cleaning agents and chemicals and can be cleaned using a high-pressure cleaner. The color can be revived using vinyl cleaner or similar.