

# Mule

NRO101



Item no. NRO101-0401

### General Product Information

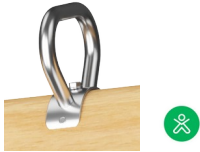
Dimensions LxWxH	44x75x65 cm
Age group	3+
Play capacity (users)	1
Colour options	 



What sets this springtoy apart from others is its beautiful hand-crafted Robinia timber. Children can touch and learn what natural timber looks and feels like, all the while having fun on what is a playground classic.

# Mule

NRO101



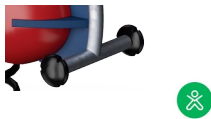
## Handhold

**Physical:** opens more hold positions and ensures good grip, necessary for rocking intensely which trains hand and arm muscles.



## Double seating option

**Social-Emotional:** rocking together supports cooperation skills, and physical contact with others is great for children's wellbeing, measurable in lower cortisol levels.



## Foot support

**Physical:** the footrest supports intensive rocking, which stimulates the senses of balance and space, fundamental for managing the world securely.



## Rocking spring

**Physical:** response to movements adds to spatial awareness and sense of balance which are fundamental motor skills.

**Cognitive:** trains the understanding of cause and effect: when I move my body, the spring responds with movement.

# Mule

NRO101



All organic Robinia products by KOMPAN are made of Robinia wood which is sourced from sustainable plantation farms. On request it can be supplied as FSC® Certified (FSC® C004450).

Footsteps are made of high-quality stainless steel and equipped with moulded on PUR footrests. The PUR footrests are designed with grooves to make the surface slip-resistant.

KOMPAN's springs are manufactured from high-quality spring steel. The springs are cleaned by phosphating before being painted with epoxy primer and polyester powder coating. The springs are fixed by unique anti-pinch fittings for maximum safety and longevity.

Item no. NRO101-0401	
<b>Installation Information</b>	
Max. fall height	60 cm
Safety surfacing area	6.8 m <sup>2</sup>
Total installation time	2.1
Excavation volume	0.16 m <sup>3</sup>
Concrete volume	0.00 m <sup>3</sup>
Footing depth (standard)	41 cm
Shipment weight	51 kg
Anchoring options	In-ground ✓ Surface ✓
<b>Warranty Information</b>	
Robinia Wood	15 years
Spare Parts Guarantee	10 years
Springs	5 years
Stainless Steel Components	Lifetime



The Robinia wood can be supplied as untreated raw wood or painted with a brown coloured transparent pigment that maintains the golden wood colour of the wood.



# Sustainability Data

NRO101



Cradle to Gate A1-A3	Total CO <sub>2</sub> emission	CO <sub>2</sub> e/kg	Recycled materials
	kg CO <sub>2</sub> e	kg CO <sub>2</sub> e/kg	%
NRO101-0401	61.12	1.31	18.23

The overall framework applied for these factors is the Environmental Product Declaration (EPD), which quantifies "environmental information on the life cycle of a product and enable comparisons between products fulfilling the same function" (ISO, 2006). This follows the structure and applies a Life-Cycle Assessment approach to the entire Product stage from raw material through manufacturing (A1-A3))

**Kompan A/S**  
 C.F. Tietgens Boulevard 32C  
 DK-5220 Odense SØ  
 Denmark



## Verification of CO<sub>2</sub> calculation of: Nature play



Data version no. 2023-10-05

The CO<sub>2</sub> calculation and data are in compliance with the principles of a carbon footprint impact according to the GHG protocol (Greenhouse Gas Protocol), Scope 3, cradle to gate related to all individual components in the product category: "Nature play" represented by item no.: NRO409-0621.

(Scope 3 emissions include emission sources in the upstream and downstream value chain).

**Date: 30. October 2023 | Valid until: 30. October 2025**

**Verified by:**

Julie Marie Vejsgaard Larsen, LCA & EPD Consultant

Verification based on report: Validation of CO<sub>2</sub> calculation of 9 categories of Kompan product line, version 1.0, prepared by: Bureau Veritas HSE, Denmark: Julie M. V. Larsen.

**Publication date: 30. October 2023**

**By Bureau Veritas HSE**  
 www.bureauveritas.dk  
 +45 7731 1000

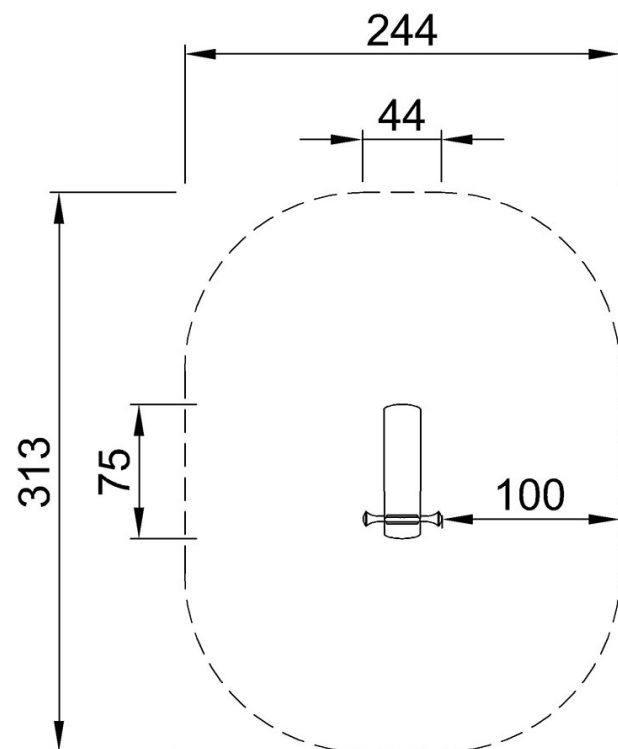


# Mule

NRO101

\* Max fall height | \*\* Total height | \*\*\* Safety surfacing area

\* Max fall height | \*\* Total height



NRO101  
\*60cm  
\*\*65cm  
\*\*\*6.8m<sup>2</sup>



NRO101

[Click to see TOP VIEW](#)

[Click to see SIDE VIEW](#)