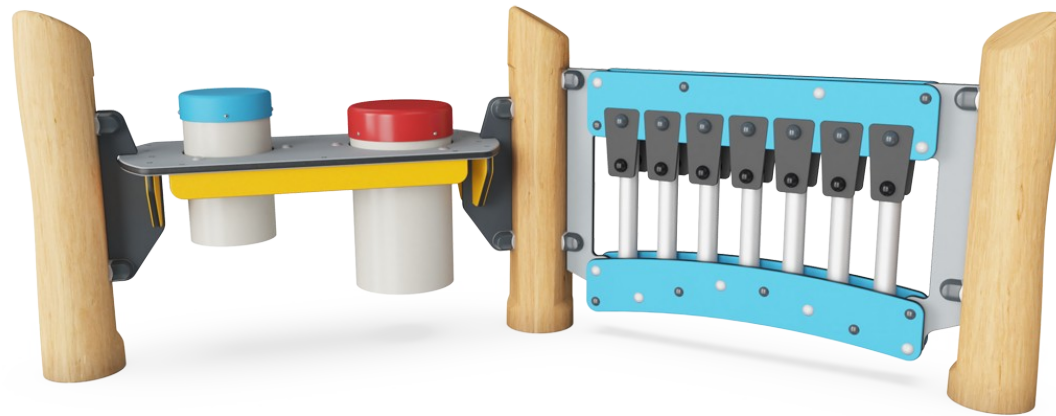


Music Play Panel 2

NRO613



Item no. NRO613-1001	
General Product Information	
Dimensions LxWxH	209x97x83 cm
Age group	1+
Play capacity (users)	6
Colour options	



The Music Play Panel 2 attracts children immensely with its colorful combinations of rhythm, sounds and tones. They will come back again and again to be part of creative play, on their own or with friends and teachers. The music pipes offer sensory variations with a tonal sound outcome. Children train the hand-eye coordination which is crucial to control of

movement and e.g. handwriting. The black rubber flaps can be plunked, or pipes beaten and tunes created. This trains logical as well as creative thinking and invites cooperation and social play. The Percussion Panel is an immense play invitation for children: The drums can be played alone or together. There is room for many users to congregate around them.

This encourages social interaction and co-creation when drumming rhythms and singing along. It also stimulates cognition and creativity as children create rules and rhythms together or individually.



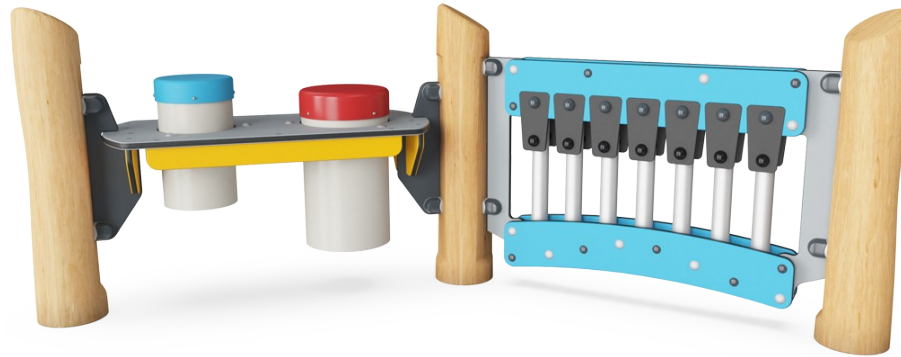
Music Play Panel 2

NRO613



Music tubes

Social-Emotional: invite social interaction and co-creation for more children, on both sides. **Cognitive:** understanding of cause and effect when striking tubes. **Creative:** the creation of different intensity and tonality stimulates creative skills.



Two sides

Social-Emotional: the low height and the transparency of the panel invites cooperation and communication.



Rubber flaps

Social-Emotional: the two rows of flaps invite cooperation and co-creation. **Cognitive:** 'Cause and effect' understanding when discovering sound from flaps hitting tubes.



Tonality

Cognitive: creative thinking when combining tones into tunes. **Creative:** composing new tonal combinations stimulates creativity.

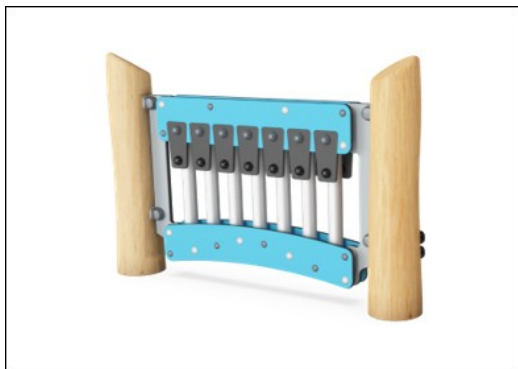


Drums

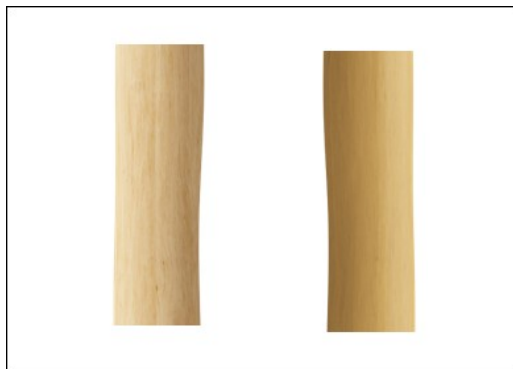
Social-Emotional: cooperation and co-creation, parallel and group play. **Cognitive:** cause and effect understanding when creating sounds, supports a sense of rhythm, essential for pre-reading. **Creative:** creating and leaving a mark with sound.

Music Play Panel 2

NRO613



All organic Robinia products by KOMPAN are made of Robinia wood which is sourced from sustainable plantation farms. On request it can be supplied as FSC® Certified (FSC® C004450).



All Robinia products can be supplied as untreated raw wood or painted with a brown coloured transparent pigment that maintains the golden wood colour of the wood.



There are multiple footing options for all products: Surface anchoring with steel footings and expansion bolts, or wood in-ground or steel in-ground footings.

Item no. NRO613-1001

Installation Information

Max. fall height	0 cm
Safety surfacing area	14.9 m ²
Total installation time	4.8
Excavation volume	0.38 m ³
Concrete volume	0.00 m ³
Footing depth (standard)	100 cm
Shipment weight	168 kg
Anchoring options	In-ground ✓ Surface ✓

Warranty Information

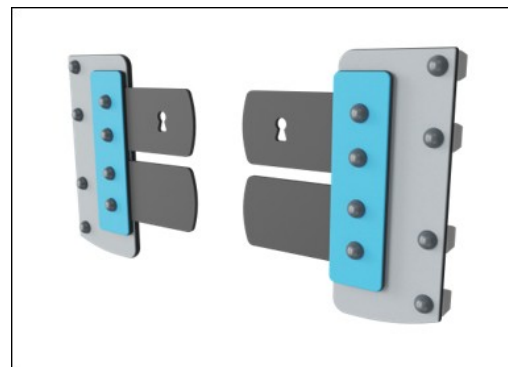
EcoCore HDPE	Lifetime
Galvanised Steel	Lifetime
Movable Parts	2 years
Robinia Wood	15 years
Spare Parts Guarantee	10 years



Panels of 19mm EcoCore™. EcoCore™ is a highly durable, eco-friendly material, which is not only recyclable after use but also consists of a core produced from 100% recycled material.



The Xylophone music panel consists of HDPE material in 19mm EcoCore™. The pipes are made of die-cast aluminium specially alloyed for outdoor environments. The percussion panel includes two Conga Drums with PP tubes and top in coloured ABS.

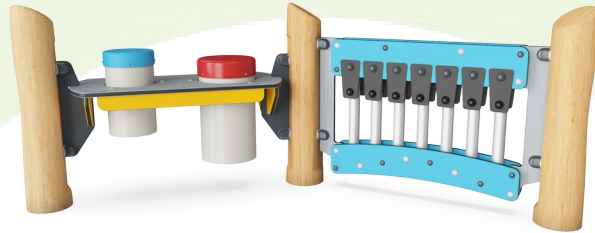


Membranes consist of friction-proof rubberised material of conveyor belt quality with excellent UV resistance which is then embedded in a four-layered armouring made of woven polyester. The armouring and the two surface layers result in a total thickness of 9 mm.



Sustainability Data

NRO613



Cradle to Gate A1-A3	Total CO ₂ emission	CO ₂ e/kg	Recycled materials
	kg CO ₂ e	kg CO ₂ e/kg	%
NRO613-1001	89.96	0.72	15.58

The overall framework applied for these factors is the Environmental Product Declaration (EPD), which quantifies "environmental information on the life cycle of a product and enable comparisons between products fulfilling the same function" (ISO, 2006). This follows the structure and applies a Life-Cycle Assessment approach to the entire Product stage from raw material through manufacturing (A1-A3))

Kompan A/S
 C.F. Tietgens Boulevard 32C
 DK-5220 Odense SØ
 Denmark



Verification of CO₂ calculation of: Themed play systems



Data version no. 2023-10-05

The CO₂ calculation and data are in compliance with the principles of a carbon footprint impact according to the GHG protocol (Greenhouse Gas Protocol), Scope 3, cradle to gate related to all individual components in the product category: "Themed play systems" represented by item no.: MSC641100-3717P.

(Scope 3 emissions include emission sources in the upstream and downstream value chain).

Date: 30. October 2023 | Valid until: 30. October 2025

Verified by:

Julie Marie Vejsgaard Larsen, LCA & EPD Consultant

Verification based on report: Validation of CO₂ calculation of 9 categories of Kompan product line, version 1.0, prepared by: Bureau Veritas HSE, Denmark: Julie M. V. Larsen.

Publication date: 30. October 2023

By Bureau Veritas HSE
 www.bureauveritas.dk
 +45 7731 1000

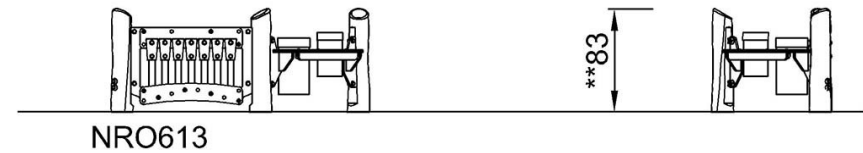
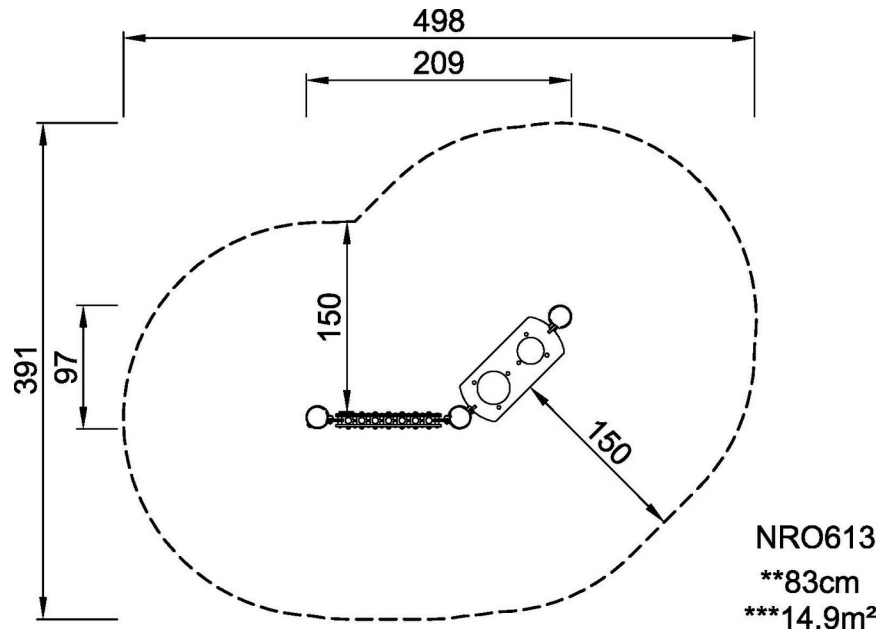


Music Play Panel 2

NRO613

* Max fall height | ** Total height | *** Safety surfacing area

* Max fall height | ** Total height



[Click to see TOP VIEW](#)

[Click to see SIDE VIEW](#)