


Home & Garden

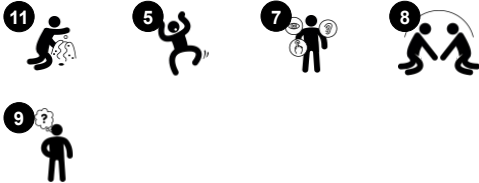
MSV601



The Home and Garden hold an eternal attraction. They are recognizable and close to the toddler world. The Garden side has a door bell, a flag that can be hoisted up and down, a post box, a string with play sphere, a green see-through peep hole and a pot, which can be removed from its holder. The Home side has an indoor post box, shoes with laces, a switch, a

green see-through peep hole, a blue tube to pass items through to the other side, and a mirror. A Play Book text with curriculum supportive games can be ordered.

Item no. MSV60100-0201	
General Product Information	
Dimensions LxWxH	153x120x121 cm
Age group	6m+
Play capacity (users)	8
Colour options	



Home & Garden

MSV601



Bell

Cognitive: understanding cause and effect when ringing bell. **Creative:** leaving a mark in creating a sound rhythm when ringing or knocking the bell.



Funnel

Social-Emotional: trains cooperation and turn-taking as children put materials into the funnel. **Cognitive:** the passing of materials through funnels supports the children's logical thinking and for younger children the understanding of object permanence: that materials don't vanish but run through at the other end.



Pot

Cognitive: the pot can be removed, stimulating cause and effect understanding. Filling and emptying the pot stimulates logical thinking and the understanding of concepts such as empty and full. **Creative:** placing the pot in other areas of the play space in creative ways can support symbolic and creative thinking.



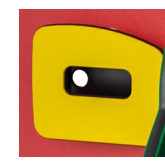
String with knobs

Social-Emotional: turn-taking and cooperation are supported when pulling the string from side to side with friends or caregiver. **Cognitive:** an understanding of object permanence is supported when the knob disappears and reappears when pulled. **Creative:** leaving the knob in different positions can support symbolic and creative thinking.



Flap door

Physical: tactile stimulation from leaning the body through rubber doors. **Cognitive:** suggests a theme and supports dramatic play, which stimulates language and communication skills.



Post box

Social-Emotional: peep-holes and two sided activities support cooperation, turn-taking and social play skills. **Cognitive:** rubber flap adds tactile variation that helps children to understand the characteristics of different materials and their uses. Putting things in post-box stimulates an understanding of object permanence: that objects may still exist when out of sight.



Shoelaces

Cognitive: tactile variation helps children to understand the characteristics of different materials and their uses. Logical thinking and memory skills are supported when tying laces correctly.

Home & Garden

MSV601



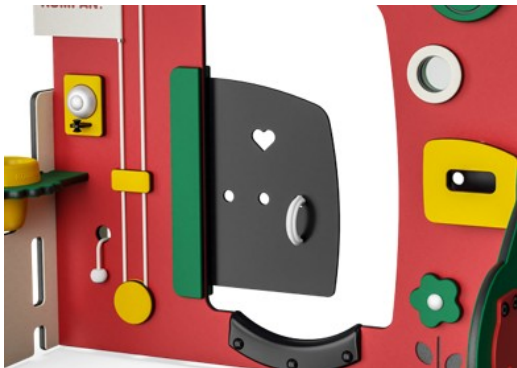
Panels of 19mm EcoCore™. EcoCore™ is a highly durable, eco friendly material, which is not only recyclable after use, but also consists of material produced from +95% recycled post consumer material from food packing waste.



Sand Pipe is made with 33% post-consumer materials in different colors in one-piece design with a wall thickness of minimum 5mm. Material in accordance with the European Standard EN 71-3 and tested for UV stability.



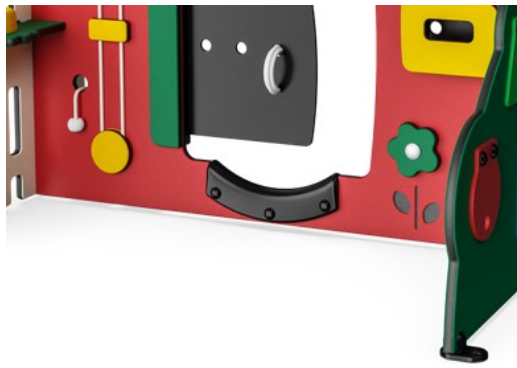
Pots are made of pressure moulded high quality nylon (PA6). PA6 has good wearing and impact strength.



Membranes consist of friction-proof rubberized material of conveyor belt quality with excellent UV resistance. Embedded is a four-layered armouring made of woven polyester. The armouring and the two surface layers result in a total thickness of 7 mm.



Flag is made of polyester. Polyester ensures strong and durable solution.



Edge protection is made of PUR. It retains its properties in the temperature range of -30°C to 60°C. Material is UV stabilised.

Item no. MSV60100-0201	
Installation Information	
Max. fall height	0 cm
Safety surfacing area	14.8 m²
Total installation time	5.9
Excavation volume	0.00 m³
Concrete volume	0.00 m³
Footing depth (standard)	0 cm
Shipment weight	47 kg
Anchoring options	Surface ✓
Warranty Information	
EcoCore HDPE	Lifetime
Membrane	2 years
Movable parts	2 years
PUR components	10 years
Spare parts guaranteed	10 years



Sustainability Data

MSV601



Cradle to Gate A1-A3	Total CO ₂ emission	CO ₂ e/kg	Recycled materials
	kg CO ₂ e	kg CO ₂ e/kg	%
MSV60100-0201	52.73	1.20	79.90

The overall framework applied for these factors is the Environmental Product Declaration (EPD), which quantifies "environmental information on the life cycle of a product and enable comparisons between products fulfilling the same function" (ISO, 2006). This follows the structure and applies a Life-Cycle Assessment approach to the entire Product stage from raw material through manufacturing (A1-A3))

Kompan A/S
C.F. Tietgens Boulevard 32C
DK-5220 Odense SØ
Denmark



Verification of CO₂ calculation of: Themed play systems



Data version no. 2023-10-05

The CO₂ calculation and data are in compliance with the principles of a carbon footprint impact according to the GHG protocol (Greenhouse Gas Protocol), Scope 3, cradle to gate related to all individual components in the product category: "Themed play systems" represented by item no.: MSC641100-3717P.

(Scope 3 emissions include emission sources in the upstream and downstream value chain).

Date: 30. October 2023 | Valid until: 30. October 2025
Verified by:

Julie Marie Vejsgaard Larsen, LCA & EPD Consultant

Verification based on report: Validation of CO₂ calculation of 9 categories of Kompan product line, version 1.0, prepared by: Bureau Veritas HSE, Denmark: Julie M. V. Larsen.

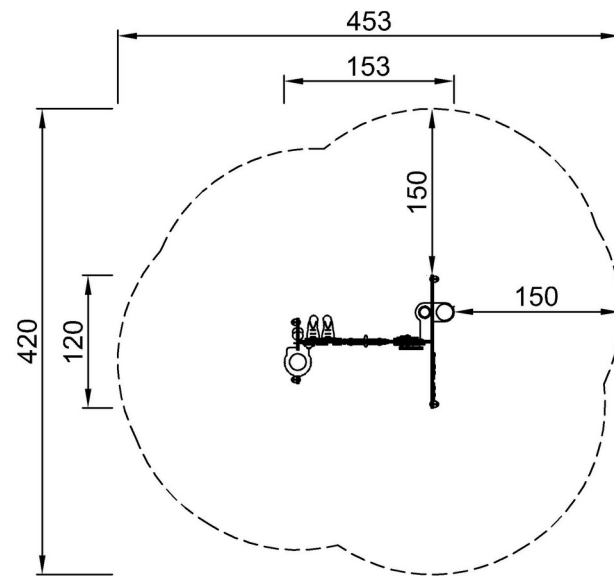
Publication date: 30. October 2023

By Bureau Veritas HSE
www.bureauveritas.dk
+45 7731 1000



* Max fall height | ** Total height | *** Safety surfacing area

* Max fall height | ** Total height



MSV60100-0201

**121cm
***14.8m²



MSV60100-0201

[Click to see TOP VIEW](#)

[Click to see SIDE VIEW](#)