

# LOOP Circle

TPP29500



Item no. TPP29500-0001

## General Product Information

Dimensions LxWxH 180x180x40 cm

Age group

Play capacity (users)

Color options



With its circular form and individual colours Loop creates a characteristic environment in urban spaces, playgrounds, parks, schools etc. For children in schools and other institutions Loop will be irresistible for a break or play. Loop can be used indoor + outdoor in various social and cultural contexts to take an informal rest or movement on, in and around. Ideal for

4-6 people.

# LOOP Circle

TPP29500



The Loops modular elements are made of rotation molded polyethylene (PE) with a thickness of 6-7mm. The Loops are UV-resistant, have excellent impact strength and are usable within a large temperature span.



The product molds are textured through abrasive blasting, enhancing surface friction and reducing slipperiness ensuring a safer experience.



The Loops come in 10 standard colors, offering a variety of options to personalize your product and ensure a perfect fit for your intended space.

Item no. TPP29500-0001

## Installation Information

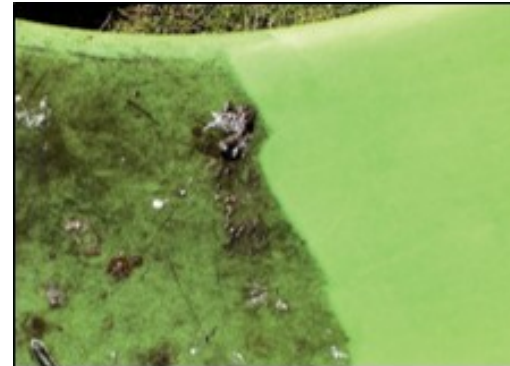
Total installation time	0.0
Excavation volume	0.00 m <sup>3</sup>
Concrete volume	0.00 m <sup>3</sup>
Footing depth (standard)	0 cm
Shipment weight	37 kg
Anchoring options	



The Loops are available in a recycled version made from 100% recycled materials. 85% of the plastic is sourced from internal waste and production surplus, while remaining 15% comes from polyethylene bags. The recycled version comes in an anthracite color.



The Loops can be anchored to the ground by filling them with water or sand using integrated plugs. Alternatively, they can be secured using surface or ground brackets.



This product withstands most cleaning agents and chemicals and can be cleaned using a high-pressure cleaner. The color can be revived using vinyl cleaner or similar.