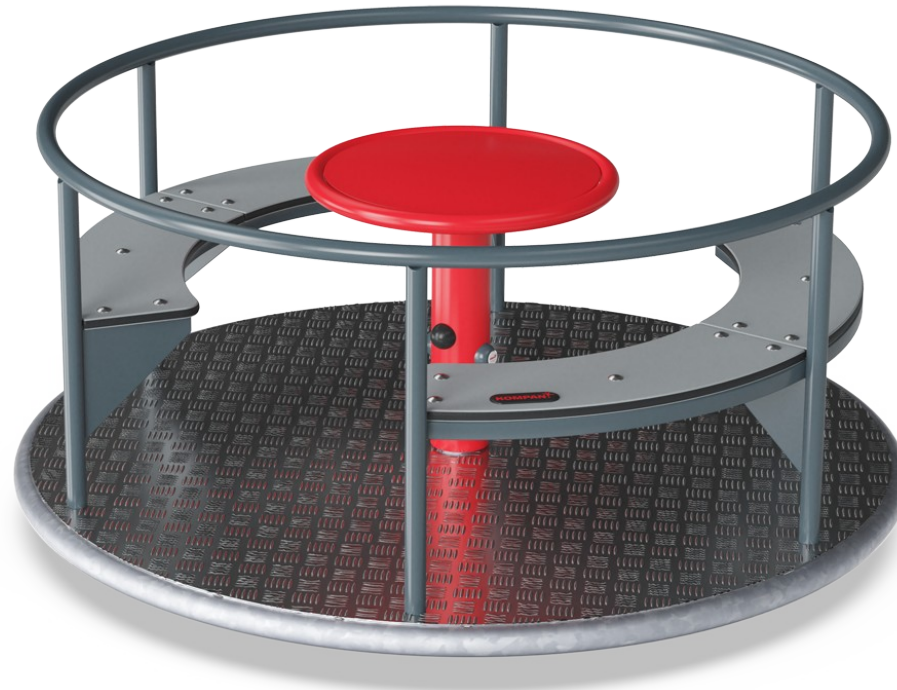


Carousel with Bench

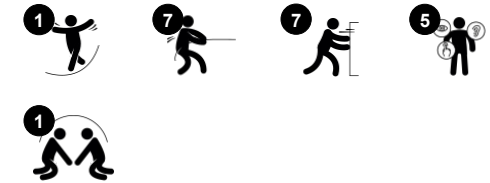
KPL114



Item no. KPL114-0902

General Product Information

Dimensions LxWxH	155x155x71 cm
Age group	2+
Play capacity (users)	8
Color options	



The red, spinning carousel attracts children and adults alike. With its turn table and two benches it radiates social spinning play, and children cannot get enough of that. The spinning can be started by pushing or pulling the carousel into motion from the outside. Or, when seated, users can use the table as a stable base to turn the carousel from. The

rounded shape makes room for users both seated and standing. Spinning on the carousel trains the vestibular system and the whole sense of balance. This is fundamental for the child's ability to move around the world safely. It's fundamental for walking, running and even being able to sit still and concentrate. When the sense of balance is under-developed, children

can focus on nothing but keeping equilibrium, seated or standing. So the fun of the thrill by spinning serves a true purpose.

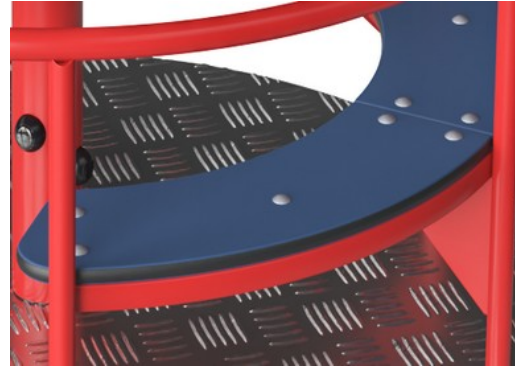


Carousel with Bench

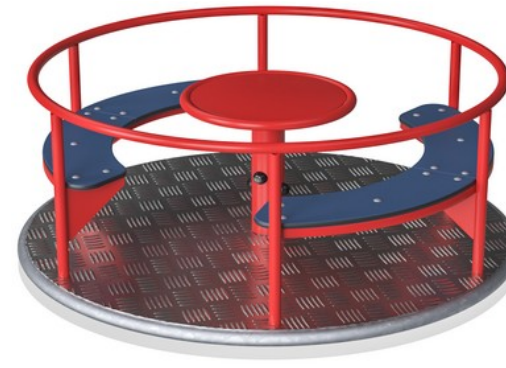
KPL114



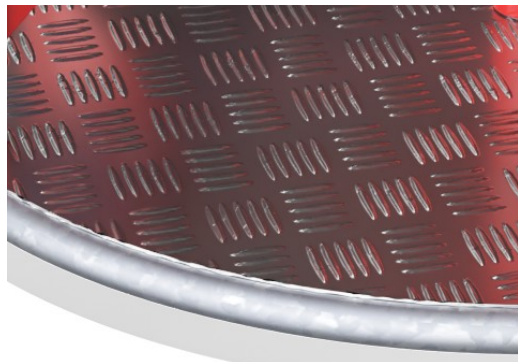
The steel surfaces are hot dip galvanised inside and outside with lead free zinc and with powder coated top-finish. The galvanisation has excellent corrosion resistance in outside environments and requires low maintenance.



Seats are made of 19mm EcoCore™. EcoCore™ is a highly durable, eco-friendly material, which is not only recyclable after use, but it is also Made of +95% recycled post-consumer material from e.g., food packing waste in both core and colorful outer layer.



Heavy duty engineered bearing system with two single row deep groove high quality ball bearings with rubber seals. The fully closed bearing construction is lifetime lubricated and located above ground.



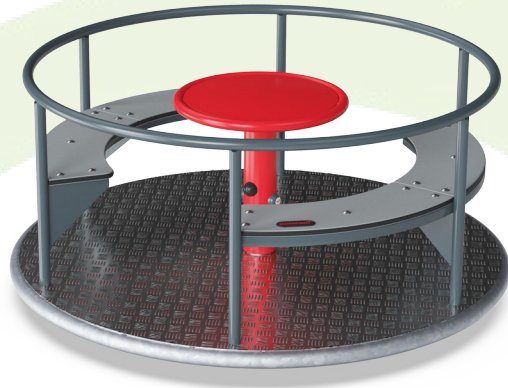
Deck plate of 3mm thick high-quality aluminium with 2mm texture pattern. This aluminium plate ensures safe play for all users and requires low maintenance.

Item no. KPL114-0902	
Installation Information	
Max. fall height	100 cm
Safety surfacing area	24.2 m ²
Total installation time	4.1
Excavation volume	0.56 m ³
Concrete volume	0.50 m ³
Footing depth (standard)	100 cm
Shipment weight	193 kg
Anchoring options	In-ground ✓



Sustainability Data

KPL114



Cradle to Gate A1-A3	Total CO ₂ emission	CO ₂ e/kg	Recycled materials
	kg CO ₂ e	kg CO ₂ e/kg	%
KPL114-0902	527.20	3.20	48.00

The overall framework applied for these factors is the Environmental Product Declaration (EPD), which quantifies "environmental information on the life cycle of a product and enable comparisons between products fulfilling the same function" (ISO, 2006). This follows the structure and applies a Life-Cycle Assessment approach to the entire Product stage from raw material through manufacturing (A1-A3)

Kompan A/S
C.F. Tietgens Boulevard 32C
DK-5220 Odense SØ
Denmark



Verification of CO₂ calculation of: Freestanding play equipment



Data version no. 2023-10-05

The CO₂ calculation and data are in compliance with the principles of a carbon footprint impact according to the GHG protocol (Greenhouse Gas Protocol), Scope 3, cradle to gate related to all individual components in the product category: "Freestanding play equipment" represented by item no.: GXY916012-3417.

(Scope 3 emissions include emission sources in the upstream and downstream value chain).

Date: 30. October 2023 | Valid until: 30. October 2025

Verified by:

Julie Marie Vejsgaard Larsen, LCA & EPD Consultant

Verification based on report: Validation of CO₂ calculation of 9 categories of Kompan product line, version 1.0, prepared by: Bureau Veritas HSE, Denmark: Julie M. V. Larsen.

Publication date: 30. October 2023

By Bureau Veritas HSE
www.bureauveritas.dk
+45 7731 1000

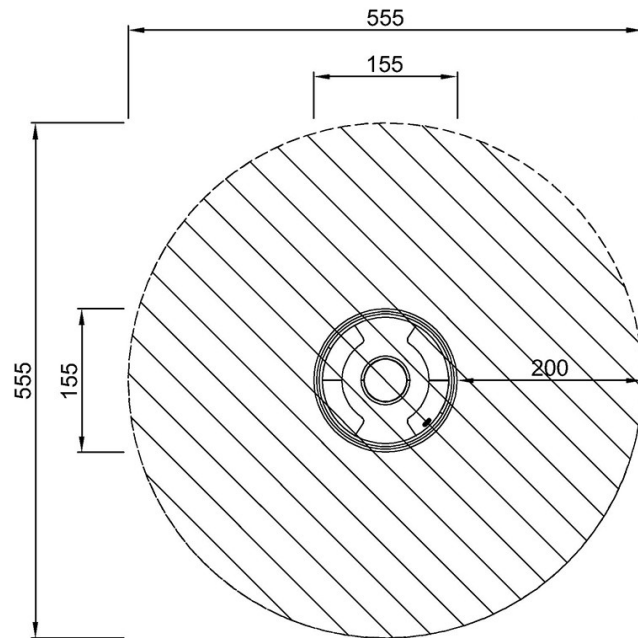


Carousel with Bench

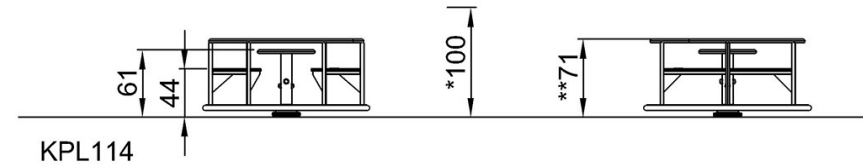
KPL114

* Max fall height | ** Total height | *** Safety surfacing area

* Max fall height | ** Total height



KPL114
*100cm
**71cm
***24.2m²



[Click to see TOP VIEW](#)

[Click to see SIDE VIEW](#)