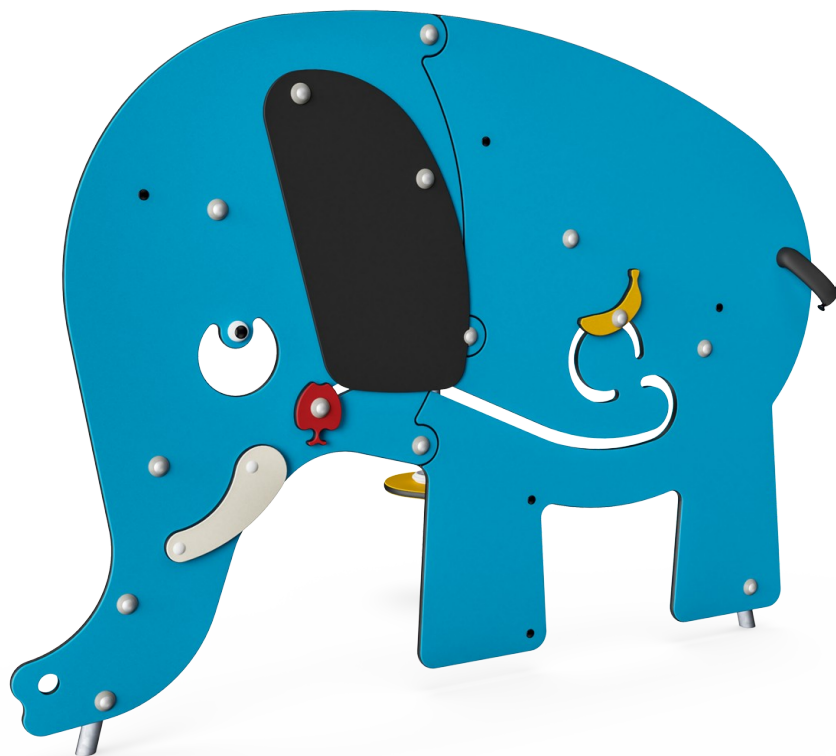

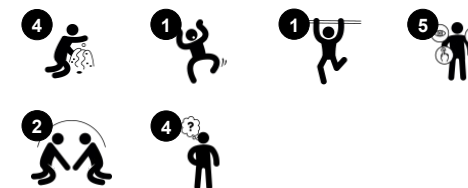


# Elephant

MSC5420



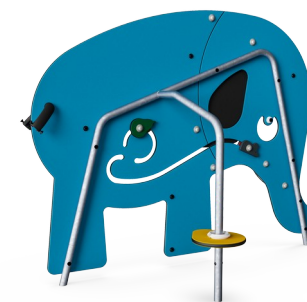
Item no. MSC542000-3417P	
<b>General Product Information</b>	
Dimensions LxWxH	188x75x140 cm
Age group	6m+
Play capacity (users)	4
Color options	



WOW! The Elephant is an iconic play-ground attraction that invites play and inspires stories. The Elephant is a fun space creator that toddlers return to again and again to investigate the playful manipulative items and create new stories: the banana, apples and pears go from the mouth to the stomach. The Mouse and Elephant story is thrilling to little

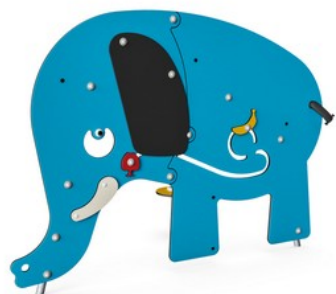
people. Storytelling and imagination are important for language development and thinking skills. The tactile variation, with rubber ear and smooth fabric tail adds to the tactile stimulation. The space under the Elephant's tummy and trunk is great for climbing through, training cross-coordination. The holes facilitate peek-a-boo games, too. Peek-a-boo develops

the infant's understanding of object permanence: that people and items still exist even if they are out of sight for a while.

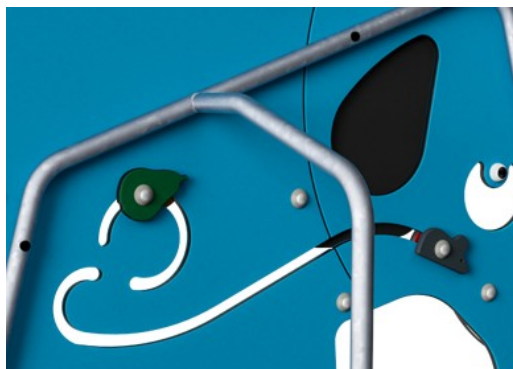


# Elephant

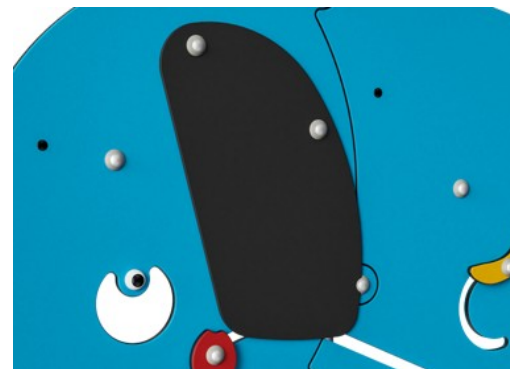
MSC5420



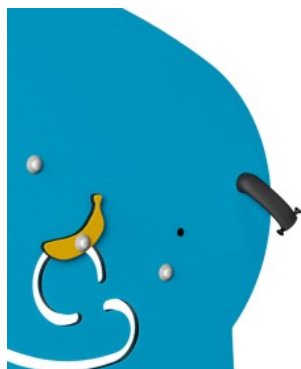
Panels of 19mm EcoCore™. EcoCore™ is a highly durable, eco friendly material, which is not only recyclable after use, but also consists of material produced from +95% recycled post consumer material from food packing waste.



The steel support posts are hot dip galvanised inside and outside with lead free zinc. The galvanisation has excellent corrosion resistance in outside environments and requires low maintenance.



Corocord membranes consist of friction-proof rubberized material of conveyor belt quality with excellent UV resistance. Tested and compliant with REACH requirements for PAH. Embedded is a four-layered armouring made of woven polyester. The armouring and the two surface layers result in a total thickness of 7.5 mm.



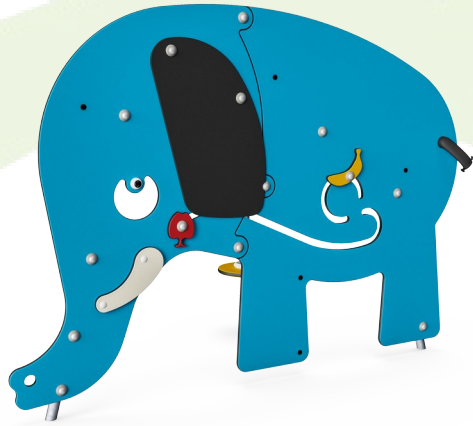
Tail is made of soft and bendable woven bands. Base material of straps is PP which has good wearing and impact resistance.

Item no. MSC542000-3417P	
Installation Information	
Max. fall height	0 cm
Safety surfacing area	14.2 m <sup>2</sup>
Total installation time	4.2
Excavation volume	0.13 m <sup>3</sup>
Concrete volume	0.00 m <sup>3</sup>
Footing depth (standard)	60 cm
Shipment weight	55 kg
Anchoring options	In-ground ✓ Surface ✓



# Sustainability Data

MSC5420



Cradle to Gate A1-A3	Total CO <sub>2</sub> emission	CO <sub>2</sub> e/kg	Recycled materials
	kg CO <sub>2</sub> e	kg CO <sub>2</sub> e/kg	%
<b>MSC542000-3417P</b>	80.20	1.58	76.00

The overall framework applied for these factors is the Environmental Product Declaration (EPD), which quantifies "environmental information on the life cycle of a product and enable comparisons between products fulfilling the same function" (ISO, 2006). This follows the structure and applies a Life-Cycle Assessment approach to the entire Product stage from raw material through manufacturing (A1-A3))

**Kompan A/S**  
 C.F. Tietgens Boulevard 32C  
 DK-5220 Odense SØ  
 Denmark



## Verification of CO<sub>2</sub> calculation of: Themed play systems



Data version no. 2023-10-05

The CO<sub>2</sub> calculation and data are in compliance with the principles of a carbon footprint impact according to the GHG protocol (Greenhouse Gas Protocol), Scope 3, cradle to gate related to all individual components in the product category: "Themed play systems" represented by item no.: MSC641100-3717P.

(Scope 3 emissions include emission sources in the upstream and downstream value chain).

**Date: 30. October 2023 | Valid until: 30. October 2025**

Verified by:

Julie Marie Vejsgaard Larsen, LCA & EPD Consultant

Verification based on report: Validation of CO<sub>2</sub> calculation of 9 categories of Kompan product line, version 1.0, prepared by: Bureau Veritas HSE, Denmark: Julie M. V. Larsen.

**Publication date: 30. October 2023**

By Bureau Veritas HSE  
 www.bureauveritas.dk  
 +45 7731 1000

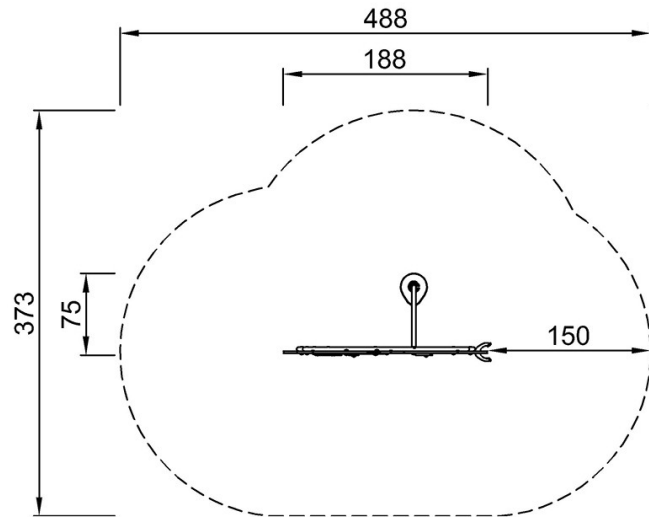


# Elephant

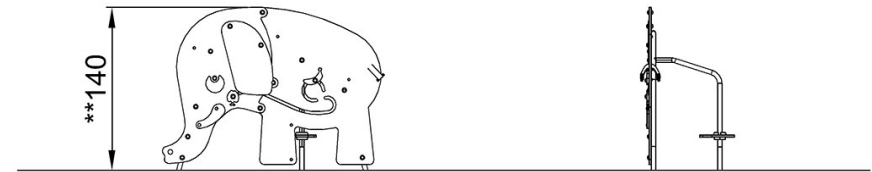
MSC5420

\* Max fall height | \*\* Total height | \*\*\* Safety surfacing area

\* Max fall height | \*\* Total height



MSC542000P  
\*\*140cm  
\*\*\*14.2m<sup>2</sup>



MSC542000P

[Click to see TOP VIEW](#)

[Click to see SIDE VIEW](#)