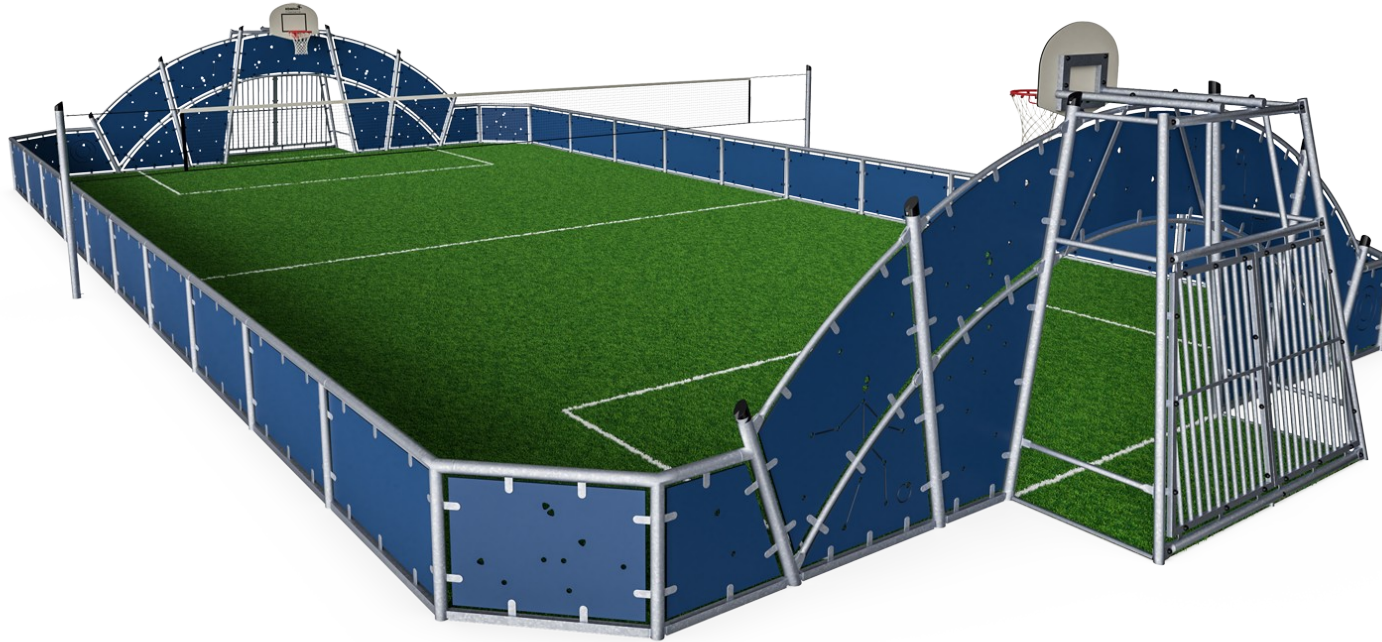


# Cosmos, 39 x 81 ft

FRE2111

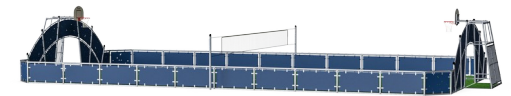
**KOMPANI**  
Let's play



Item no. FRE2111-3317

## General Product Information

Dimensions LxWxH	80'9"x42'8"x12'2"
Age group	3+
Play capacity (users)	-
Color options	●



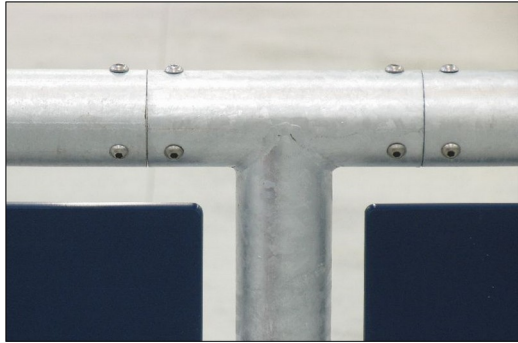
FREEGAME is designed to explore the benefits of sports and socializing. It's always open for games as well as for making friends, personality building and learning the rules of social life. It's a place for physical activities that encourage adolescents to lead active lifestyles. With facilities and all-round visibility that allow the users to feel safe, FREEGAME creates true

'living space' for all age groups. The broad entrance of the pitches provides accessibility for all and therefore inclusion. Adolescents with disabilities can access the activities to be part of the game or just relax and watch the play. Meet and move.

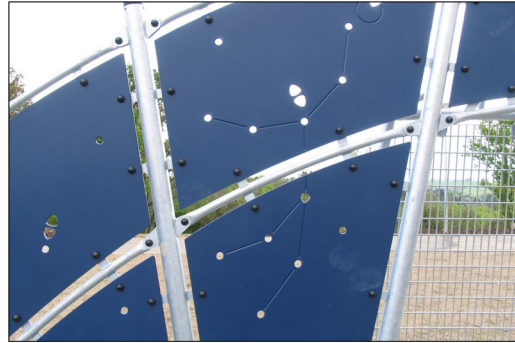


# Cosmos, 39 x 81 ft

FRE2111



All steel components are manufactured from carbon steel, welding's according EN ISO 5817 & Hot dip galvanized (HDG) according to ISO1461. This process ensures good protection in all circumstances.



The HDPE panels are made with +95% recycled post-consumer material, e.g., food packing waste. Available in Night Sky Blue, with multiple other colors available to be requested. You can also request HDPE panels with patterns or logos engraved to increase the play value.



The goal measures ~140cm in depth and ~330cm in width, with all posts made of galvanized steel with a hot dip galvanized surface treatment. The front frame is made with Ø48 tubing, and the backside of the goal uses ten tubes with a diameter of ø38.



Pole tops are molded of thermoplastic rubber (TPV) with a steel inlay. TPV is highly durable against wear and tear, and the steel inlay secures durability.



The basketball hoop is made from hot-dipped galvanized steel with a powder-coated finish, and the backboard is made from +95% PCR HDPE. The net is made from 100% nylon, with a circumference of ~Ø12.8in at the bottom and ~Ø19.7in at the top. The net can also be supplied with steel-reinforced PA net or steel chains.

Item no. FRE2111-3317

### Installation Information

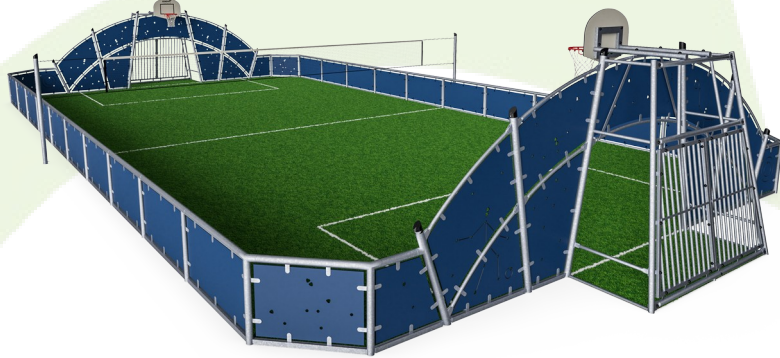
Max. fall height	0'0"
Safety surfacing area	0ft <sup>2</sup>
Total installation time	75.6
Excavation volume	4.77yd <sup>3</sup>
Concrete volume	4.66yd <sup>3</sup>
Footing depth (standard)	2'4"
Shipment weight	7876lbs
Anchoring options	In-ground ✓

### Warranty Information

EcoCore HDPE	Lifetime
Hot dip galvanized steel	Lifetime

# Sustainability Data

FRE2111



Cradle to Gate A1-A3	Total CO <sub>2</sub> emission	CO <sub>2</sub> e/kg	Recycled materials
	kg CO <sub>2</sub> e	kg CO <sub>2</sub> e/kg	%
<b>FRE2111-3317</b>	6,284.07	1.93	65.95

The overall framework applied for these factors is the Environmental Product Declaration (EPD), which quantifies "environmental information on the life cycle of a product and enable comparisons between products fulfilling the same function" (ISO, 2006). This follows the structure and applies a Life-Cycle Assessment approach to the entire Product stage from raw material through manufacturing (A1-A3))

**Kompan A/S**  
 C.F. Tietgens Boulevard 32C  
 DK-5220 Odense SØ  
 Denmark



## Verification of CO<sub>2</sub> calculation of: Sport



Data version no. 2023-10-05

The CO<sub>2</sub> calculation and data are in compliance with the principles of a carbon footprint impact according to the GHG protocol (Greenhouse Gas Protocol), Scope 3, cradle to gate related to all individual components in the product category: "Sport" represented by item no.: FRE600202-0901.

(Scope 3 emissions include emission sources in the upstream and downstream value chain).

**Date: 30. October 2023 | Valid until: 30. October 2025**

Verified by:

Julie Marie Vejsgaard Larsen, LCA & EPD Consultant

Verification based on report: Validation of CO<sub>2</sub> calculation of 9 categories of Kompan product line, version 1.0, prepared by: Bureau Veritas HSE, Denmark: Julie M. V. Larsen.

**Publication date: 30. October 2023**

By Bureau Veritas HSE  
 www.bureauveritas.dk  
 +45 7731 1000



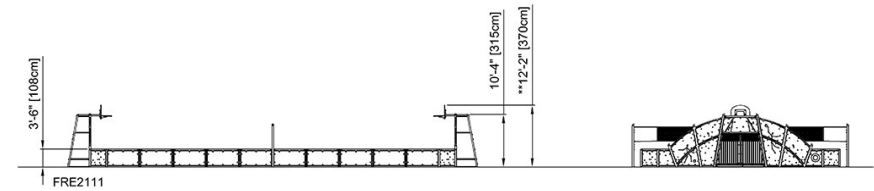
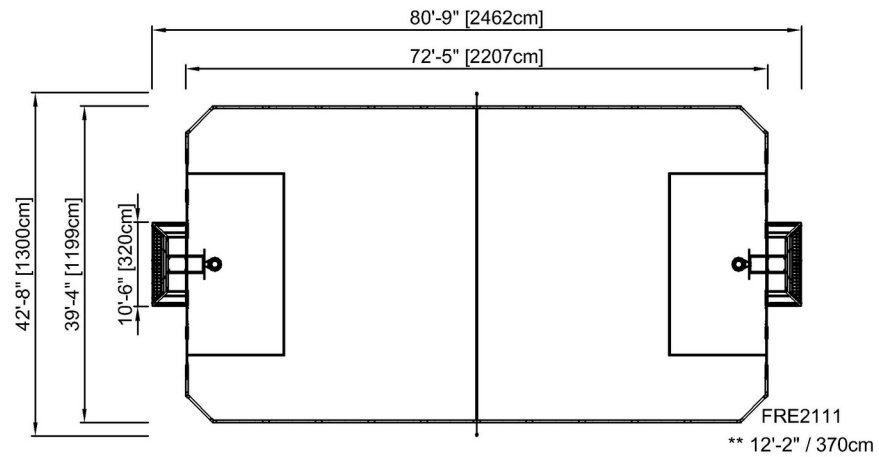


# Cosmos, 39 x 81 ft

FRE2111

\* Max fall height | \*\* Total height | \*\*\* Safety surfacing area

\* Max fall height | \*\* Total height



[Click to see TOP VIEW](#)

[Click to see SIDE VIEW](#)