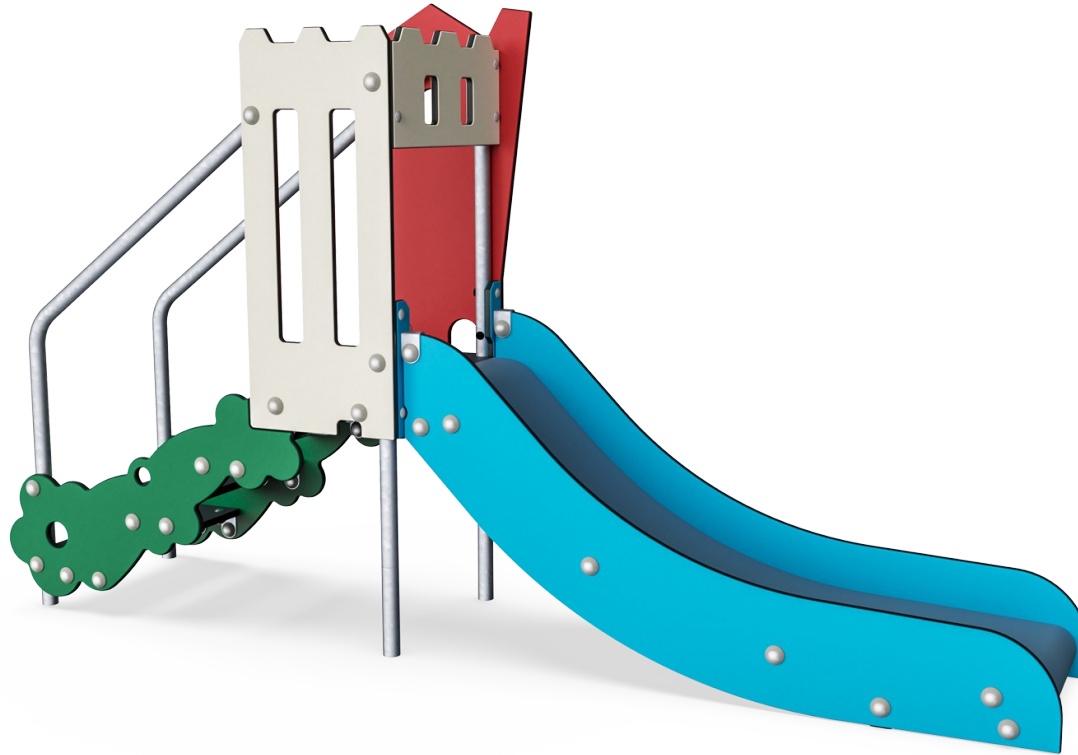


# House Slide

MSC5402

**KOMPAN**  
Let's play

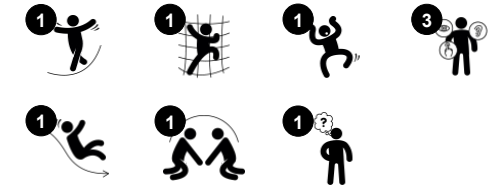


The House Slide is a favorite playground activity that attracts children to being active and playful in a thrilling way. The House Slide delights children and encourages them to be brave and enthusiastic on the playground, for hours of fun and active play. When children slide, they train their core muscles, sitting upright while sliding down. This stimulates their

trunk stability, important for avoiding back and neck pains – a growing problem in children due to sedentary lifestyles. Sliding additionally trains the child's sense of balance and spatial understanding. These skills are important in navigating the world securely. They are the fundament of all motor skills and thus a fundament in physical confidence in the child.

The house theme adds imagination to the climb and function as a story-telling prop, supporting language.

产品编号 MSC540201-3417P	
产品信息概览	
长宽高尺寸	244x55x142 cm
适用年龄段	1+
容纳人数	2
颜色选择	



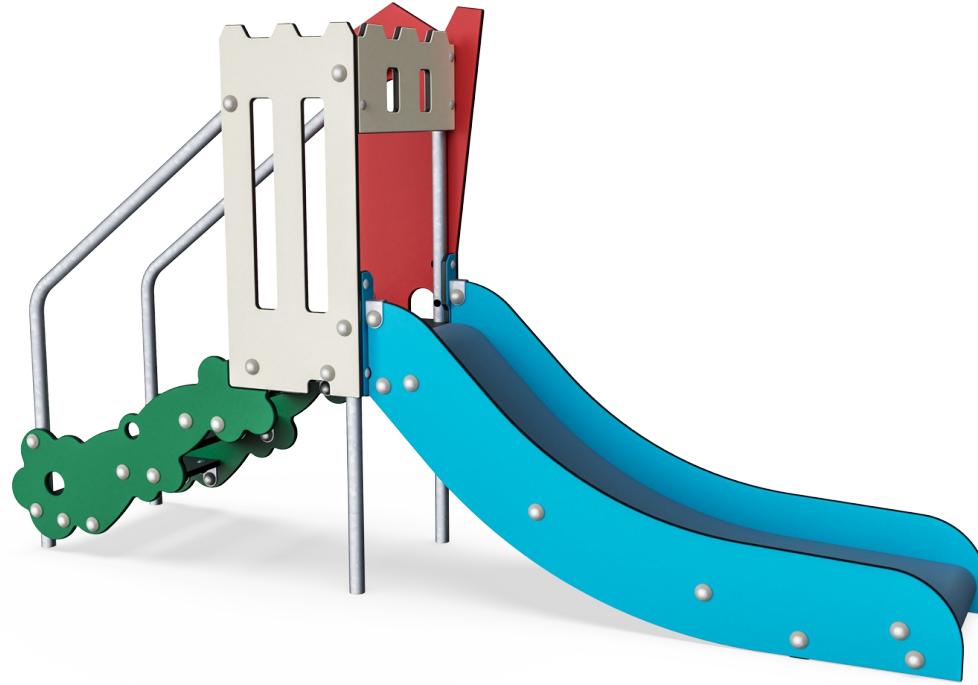
# House Slide

MSC5402



## 滑梯

**身体素质：**玩滑梯可以培养空间感和平衡感。此外，在直立向下坐时，核心肌肉也能得到锻炼。**社交情感：**轮流玩耍时可激发同理心。**认知能力：**幼儿在快速滑下时可训练对空间、速度和距离的理解。



## 游戏主题

**认知能力：**鼓励戏剧游戏，刺激儿童语言和交流能力的发展。



## Stairway

**身体素质：**climbing the stairs supports cross coordination as well as arm and leg muscles.  
**社交情感：**为中途休息和看护人提供空间。

# House Slide

MSC5402



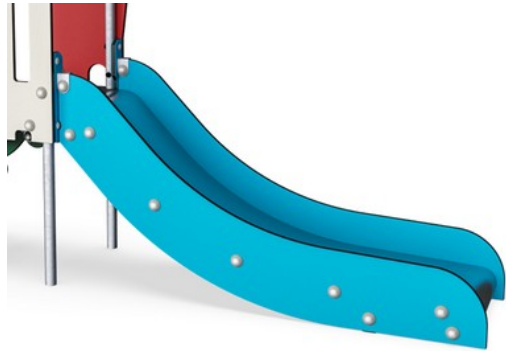
19 毫米 EcoCore™ 面板。EcoCore™ 是一种高度耐用、环保的材料，不仅在使用后可回收利用，而且还包含由 100 % 食品包装可循环材料制成的芯。



钢表面内外均采用无铅热镀锌镀层，户外耐蚀性高，维护成本低。



台阶由厚度为 178mm 的 HPL 制成，具有极高的耐磨强度和独特的 KOMPAN 防滑表面纹理。



滑梯可选用不同材质：直型成型 PE 或不锈钢滑床 t=2mm。滑梯的侧面由 EcoCore™ 制作。

产品编号 MSC540201-3417P

## 安装信息

最大跌落高度	100 cm
安全面积	15.6 m <sup>2</sup>
安装总时长	6.6
开挖量	0.17 m <sup>3</sup>
混凝土使用量	0.00 m <sup>3</sup>
标准入地深度	60 cm
运输重量	134 kg
固定选项	入地 ✓ 地表 ✓

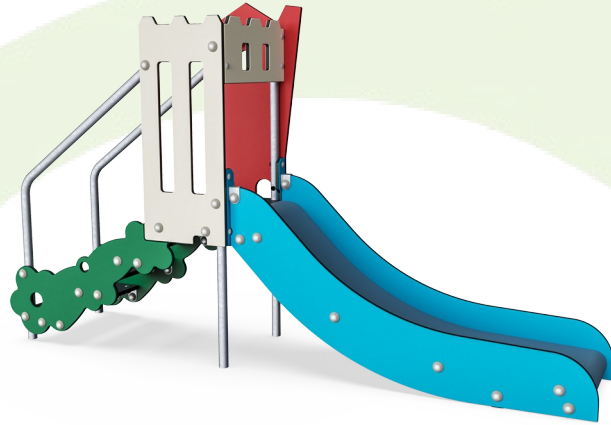
## 质保信息

EcoCore HDPE	终身质保
镀锌钢结构	终身质保
PE 滑梯	10 年
承保零部件	10 年



# Sustainability Data

MSC5402



## 从原材料到成品

CO<sub>2</sub> 排放总量

CO<sub>2</sub> 排放量 / 千克

回收的原料

kg CO<sub>2</sub>e

kg CO<sub>2</sub>e/kg

%

MSC540201-3417P

164.84

2.06

57.06

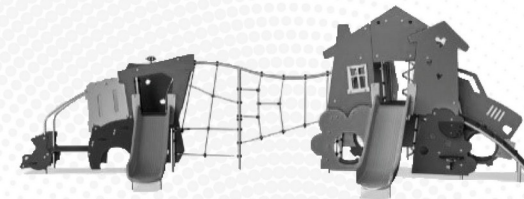
这些因素采用的总体框架为环保产品声明 (EPD), 该声明可量化“产品生命周期的环保信息, 并对相同功能的产品进行对比” (ISO, 2006)。在遵循该框架的同时, 对从原材料到制造的整个产品阶段 (A1-A3) 应用生命周期评估法。

### Kompan A/S

C.F. Tietgens Boulevard 32C  
DK-5220 Odense SØ  
Denmark



### Verification of CO<sub>2</sub> calculation of: Themed play systems



Data version no. 2023-10-05

The CO<sub>2</sub> calculation and data are in compliance with the principles of a carbon footprint impact according to the GHG protocol (Greenhouse Gas Protocol), Scope 3, cradle to gate related to all individual components in the product category: "Themed play systems" represented by item no.: MSC641100-3717P.

(Scope 3 emissions include emission sources in the upstream and downstream value chain).

Date: 30. October 2023 | Valid until: 30. October 2025

Verified by:

Julie Marie Vejsgaard Larsen, LCA & EPD Consultant

Verification based on report: Validation of CO<sub>2</sub> calculation of 9 categories of Kompan product line, version 1.0, prepared by: Bureau Veritas HSE, Denmark: Julie M. V. Larsen.

Publication date: 30. October 2023

By Bureau Veritas HSE  
www.bureauveritas.dk  
+45 7731 1000

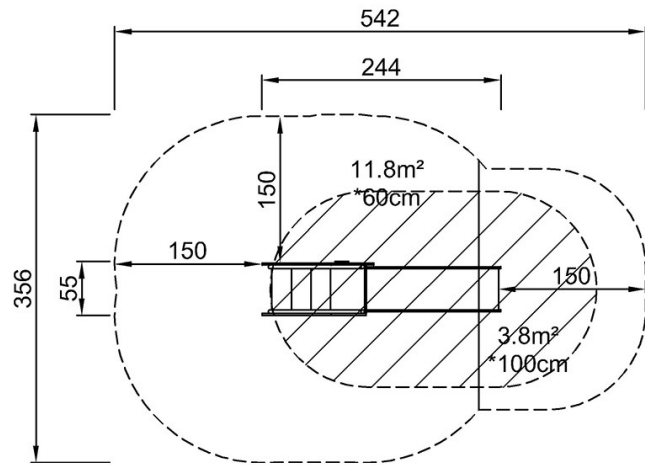


# House Slide

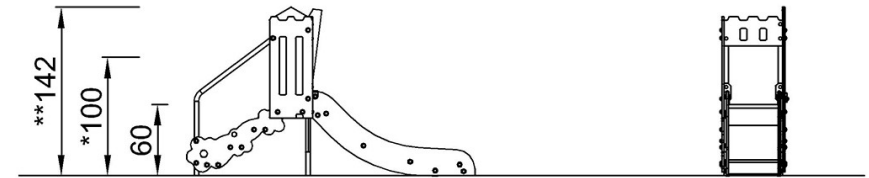
MSC5402

最大跌落高度 | 总高度 | 安全区域

最大跌落高度 | 总高度



MSC540201P  
\*100cm  
\*\*142cm  
\*\*\*15.6m<sup>2</sup>



MSC540201

[点击查看俯视图](#)

[点击查看侧面图](#)