

# LOOP Boa

TPP29660



Item no. TPP29660-0002

## General Product Information

Dimensions LxWxH 120x240x120 cm

Age group

Play capacity (users)

Color options



A funky reinterpretation of the traditional bench dining set. A functionally sculptural piece of furniture for all ages to sit, lie or hang out on – indoors and out. Boa can be used in two fundamentally different basic positions (turned 90 degrees), typically set up in groups to create spaces within spaces.

# LOOP Boa

TPP29660



The Loops modular elements are made of rotation molded polyethylene (PE) with a thickness of 6-7mm. The Loops are UV-resistant, have excellent impact strength and are usable within a large temperature span.



The product molds are textured through abrasive blasting, enhancing surface friction and reducing slipperiness, ensuring a safer experience.



The Loops come in 10 standard colors, offering a variety of options to personalize your product and ensure a perfect fit for your intended space.

Item no. TPP29660-0002

## Installation Information

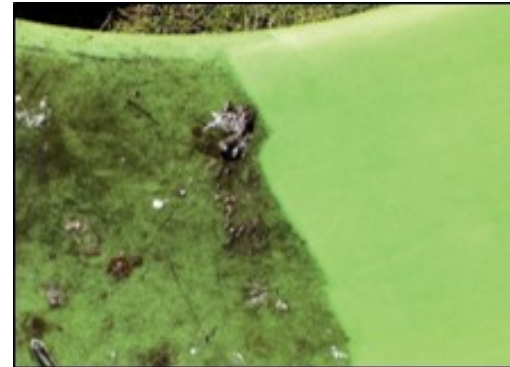
Total installation time	0.0
Excavation volume	0.00 m <sup>3</sup>
Concrete volume	0.00 m <sup>3</sup>
Footing depth (standard)	0 cm
Shipment weight	43 kg
Anchoring options	



The Loops are available in a recycled version made from 100% recycled materials. 85% of the plastic is sourced from internal waste and production surplus, while remaining 15% comes from polyethylene bags. The recycled version comes in an anthracite color.



The Loops can be anchored to the ground by filling them with water or sand using integrated plugs. Alternatively, they can be secured using surface or ground brackets.



This product withstands most cleaning agents and chemicals and can be cleaned using a high-pressure cleaner. The color can be revived using vinyl cleaner or similar.