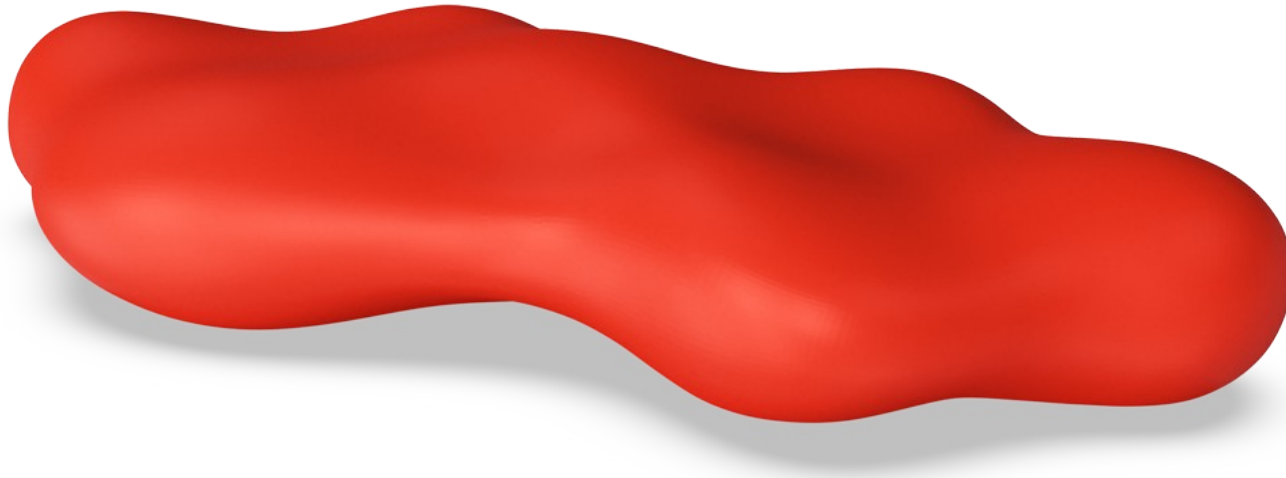



Lava

TPP29670



LOOP Lava invites informal breaks and creative expression on it and around it. This organic seating unit fits into urban spaces, parks, schools, institutions and company headquarters alike.

Item no. TPP29670-0001	
General Product Information	
Dimensions LxWxH	260x120x50 cm
Age group	
Play capacity (users)	
Colour options	

Lava

TPP29670



The Loops modular elements are made of rotation molded polyethylene (PE) with at thickness of 6-7mm. The Loops are UV-resistant, have excellent impact strength and are usable within a large temperature span.

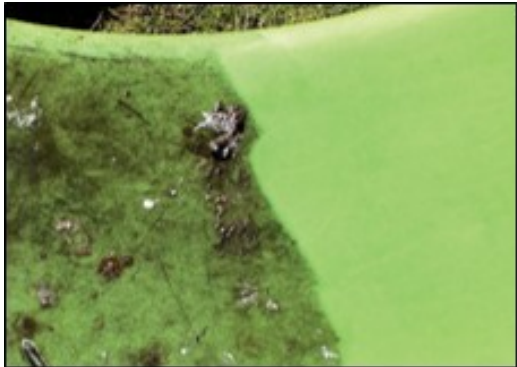


The product molds are textured through abrasive blasting, enhancing surface friction and reducing slipperiness ensuring a safer experience.



The Loops can be anchored to the ground by filling them with water or sand using integrated plugs. Alternatively, they can be secured using surface or ground brackets.

Item no. TPP29670-0001	
Installation Information	
Total installation time	0.0
Excavation volume	0.00 m³
Concrete volume	0.00 m³
Footing depth (standard)	0 cm
Shipment weight	40 kg
Anchoring options	In-ground ✓
	Surface ✓



This product withstands most cleaning agents and chemicals and can be cleaned using a high-pressure cleaner. The color can be revived using vinyl cleaner or similar.