

# LOOP HopOp 350/500

TPP29600



Item no. TPP29600-0010

## General Product Information

Dimensions LxWxH 50x50x55 cm

Age group

Play capacity (users)

Color options



Pure, simple, cylindrical forms of variable sizes and positioned at customizable heights and distances invite citizens to sit, rest, play and jump! Inspired by low tree stumps, the game "Floor is made of lava" and the possibility of varied elements in the land- and cityscape.

# LOOP HopOp 350/500

TPP29600



The Loops modular elements are made of rotation molded polyethylene (PE) with a thickness of 6-7mm. The Loops are UV-resistant, have excellent impact strength and are usable within a large temperature span.



The product molds are textured through abrasive blasting, enhancing surface friction and reducing slipperiness, ensuring a safer experience.



The Loops come in 10 standard colors, offering a variety of options to personalize your product and ensure a perfect fit for your intended space.

Item no. TPP29600-0010

### Installation Information

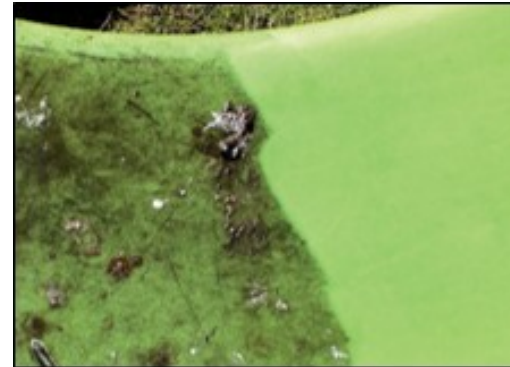
Total installation time	0.0
Excavation volume	0.00 m <sup>3</sup>
Concrete volume	0.00 m <sup>3</sup>
Footing depth (standard)	0 cm
Shipment weight	9 kg
Anchoring options	In-ground ✓ Surface ✓



The Loops are available in a recycled version made from 100% recycled materials. 85% of the plastic is sourced from internal waste and production surplus, while remaining 15% comes from polyethylene bags. The recycled version comes in an anthracite color.



The Loops can be anchored to the ground by filling them with water or sand using integrated plugs. Alternatively, they can be secured using surface or ground brackets.



This product withstands most cleaning agents and chemicals and can be cleaned using a high-pressure cleaner. The color can be revived using vinyl cleaner or similar.