

High Line Double Mega Deck Combination

PCX5101

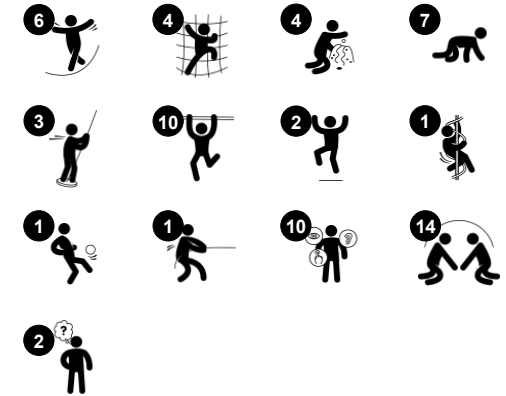
KOMPAN
Let's play



Item no. PCX510100-0901

General Product Information

Dimensions LxWxH	47'0"x46'8"x14'6"
Age group	5 - 12
Play capacity (users)	90
Color options	  



The Double Mega Deck Combination with ramps is a truly inclusive structure. It offers a great variety of activities. On the ground level is a desk for social play, a hammock where the child can have a break while still being a part of the play and a Shape Finder panel, stimulating children's thinking skills. Children love slides because they are exhilarating, fast and fun.

The High Line structure offers many different slides from low, high, wide, narrow and curved. The variety makes sure everyone will be challenged or encouraged to challenge their individual abilities. Close to the slides are challenging access points, as the thrill-seeking and fun slides motivate children to climb up for another ride. The different accesses, like the

climbing pole, overhead ladder, climbing wall, curly climber and rock climber stimulate children's cross coordination, muscle strength and balance.



High Line Double Mega Deck Combination

PCX5101



Curly climber

Physical: coordination and proprioception are supported when placing arms and legs correctly for going down. Sense of balance when rotating. Arm muscles for holding tight. **Social-Emotional:** empathy stimulated by turn-taking. **Cognitive:** logical thinking when placing arms and legs right for rotating downward.



Desk with bowl and sieve

Social-Emotional: children can gather and store materials, cooperate and take a break together. **Creative:** sand can be shifted through the sieve, for understanding of cause and effect and object permanence.



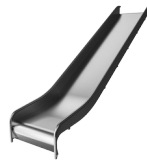
Accessible ramp

Physical: wheeling or being wheeled up the incline trains spatial awareness, and in non-electric wheelchairs it trains upper body coordination and strength. Walking or crawling up an inclined surface trains cross coordination. **Cognitive:** the gradual change of height trains the understanding of space and measures for young children.



Tunnel

Physical: the children crawl through the tunnel, developing motor skills such as cross-body coordination and proprioception. **Social-Emotional:** turn-taking when passing each other.



Wide slide

Physical: sliding develops spatial awareness and the sense of balance. **Social-Emotional:** the height ensures extra speed and thrill. Empathy stimulated by turn-taking and consideration of others. Feeling of security when stopping on extra long slide mouth.



Talk tube

Social-Emotional: encourages communication and social interaction. **Cognitive:** evokes curiosity and stimulates an understanding of cause and effect and object permanence: objects and people still exist when out of sight.



Overhead ladder

Physical: develops children's upper body muscles and arm strength, cross coordination and spatial awareness. This is especially important due to sedentary lifestyles and back-pain in children. **Social-Emotional:** chill and socialize on top of the overhead ladder, training cooperation.

High Line Double Mega Deck Combination

PCX5101



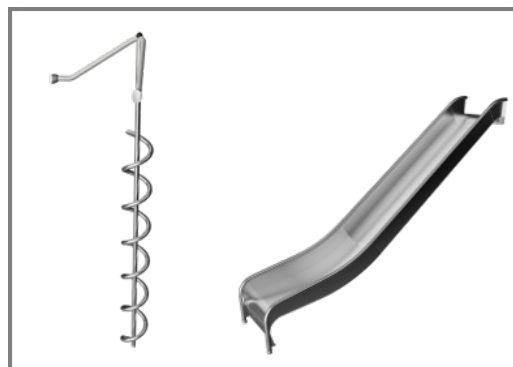
All steel components are made of high quality materials. The posts have an alloy with improved tensile and yield strength according to the NYCP material specification. The painted aluminum post caps are riveted to the top of the post.



All panels and one-piece welded steel grids are made of low carbon steel and corrosion treated by hot dip galvanization or metallization with a minimum thickness according to NYCP material specification.



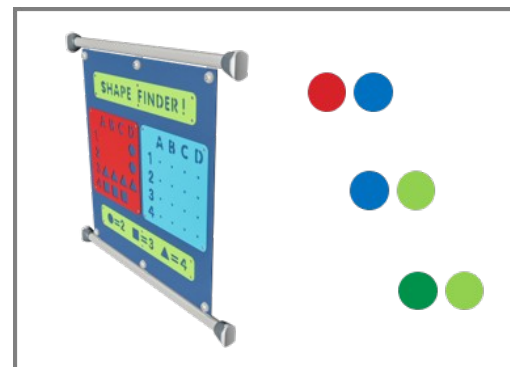
All decks are made of perforated low carbon steel plates supported by aluminum profiles with no unsupported area larger than four square feet. After metallization the decks are coated with a polyurea non-slip surface which provides extremely good wear and tear resistance.



The stainless steel activities are made of high quality stainless steel. The steel is glass blasted after manufacturing to ensure a smooth gliding surface.



Climbing Grips are a KOMPAN customized design, based on professionally designed climbing grips for optimal play value. The base material is polyester.



The products are designed in three different standard color combinations: Red and light blue, Light blue and lime green, Green and lime green. The layouts of the play structures can be customized through the KOMPAN Variant Team.

Item no. PCX510100-0901

Installation Information

Max. fall height	8'7"
Safety surfacing area	2217ft ²
Total installation time	111.2 hours
Excavation volume	3.56yd ³
Concrete volume	0.44yd ³
Footing depth (standard)	2'9"
Shipment weight	12786lbs
Anchoring options	In-ground ✓

Warranty Information

EcoCore HDPE	Lifetime
HDG post	Lifetime
HPL decks	15 Years
Ropes & nets	10 Years
Spare Parts Availability	10 Years

Elevated activities 20	Accessible elevated activities	Accessible ground level activities	Accessible ground level play types
Present	20	2	2
Required	10	0	0

**ASTM
F1487**
compliant

Sustainability Data

PCX5101



Cradle to Gate A1-A3	Total CO ₂ emission	CO ₂ e/kg	Recycled materials
	kg CO ₂ e	kg CO ₂ e/kg	%
PCX510100-0901	13,654.50	3.04	47.25

The overall framework applied for these factors is the Environmental Product Declaration (EPD), which quantifies "environmental information on the life cycle of a product and enable comparisons between products fulfilling the same function" (ISO, 2006). This follows the structure and applies a Life-Cycle Assessment approach to the entire Product stage from raw material through manufacturing (A1-A3))

Kompan A/S

C.F. Tietgens Boulevard 32C
DK-5220 Odense SØ
Denmark



Verification of CO₂ calculation of: Play systems



Data version no. 2023-10-05

The CO₂ calculation and data are in compliance with the principles of a carbon footprint impact according to the GHG protocol (Greenhouse Gas Protocol), Scope 3, cradle to gate related to all individual components in the product category: "Play systems" represented by item no.: PCM200321-0950.

(Scope 3 emissions include emission sources in the upstream and downstream value chain).

Date: 30. October 2023 | Valid until: 30. October 2025

Verified by:

Julie Marie Vejsgaard Larsen, LCA & EPD Consultant

Verification based on report: Validation of CO₂ calculation of 9 categories of Kompan product line, version 1.0, prepared by: Bureau Veritas HSE, Denmark: Julie M. V. Larsen.

Publication date: 30. October 2023

By Bureau Veritas HSE
www.bureauveritas.dk
+45 7731 1000

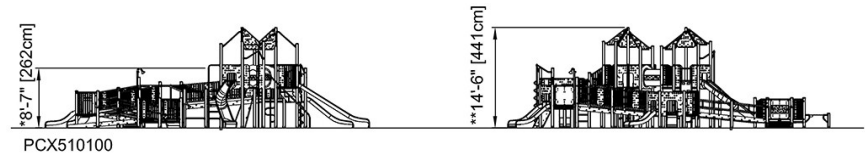
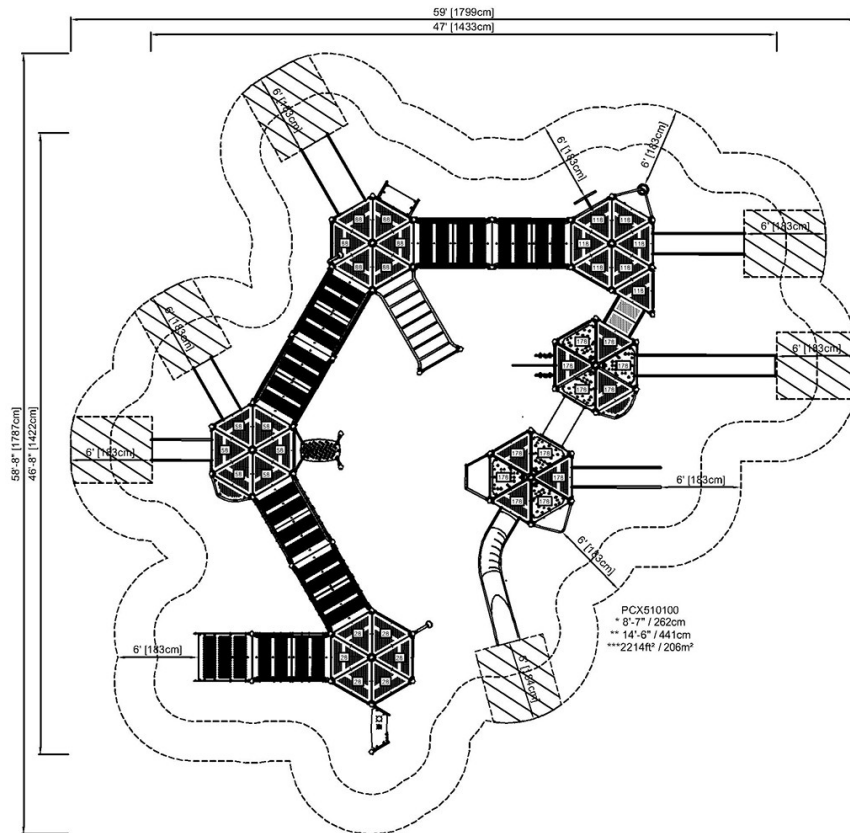


High Line Double Mega Deck Combination

PCX5101

* Max fall height | ** Total height | *** Safety surfacing area

* Max fall height | ** Total height



*NOTE: If at least 50% of the elevated play components are connected by a ramp, and if (3) of the elevated play components connected by the ramp are different play types, Table 240.2.1.2, ground level requirements shall not apply (see 2010 ADA Standards Play Areas 240.2.12 Exception.) Of the 20 elevated play components present, 12 are accessible via ramp with 5 different play types present. Therefore 240.2.1.2 need not apply for PCX510100.

[Click to see TOP VIEW](#)

[Click to see SIDE VIEW](#)