

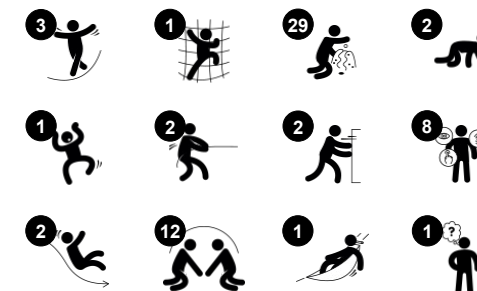
# Pioneer

PCE200531

Item no. PCE200531-0602

### General Product Information

|                       |                                                                                     |
|-----------------------|-------------------------------------------------------------------------------------|
| Dimensions LxWxH      | 1027x476x340 cm                                                                     |
| Age group             | 1+                                                                                  |
| Play capacity (users) | 44                                                                                  |
| Color options         |  |



The Pioneer is an inclusive play journey that makes children go wow. Thanks to the rich variation of play activities, children will come back again and again. A ramp leads through varied tactile play events to a vast platform with two slides. This allows for access to an elevated level. From the other end of the play structure, an accessible stairway winds up to

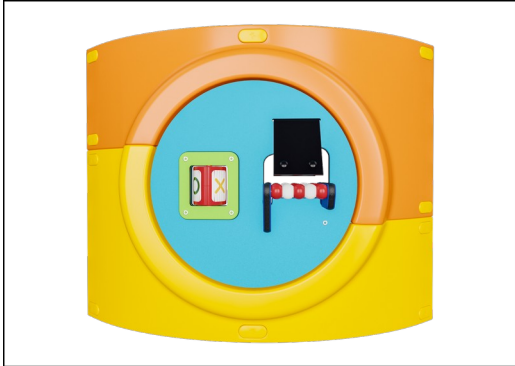
the platform. On ground level there is a hammock, a desk for sand play, music panel and numerous tactile and fun features. Talk tubes allow fun contact across the structure. All of these activities train the child's logical thinking skills and creativity. The outside of the Pioneer offers three corners for exploratory play and a break from the wilder action of the

ramp. The transparency in the structure allows for all round communication.

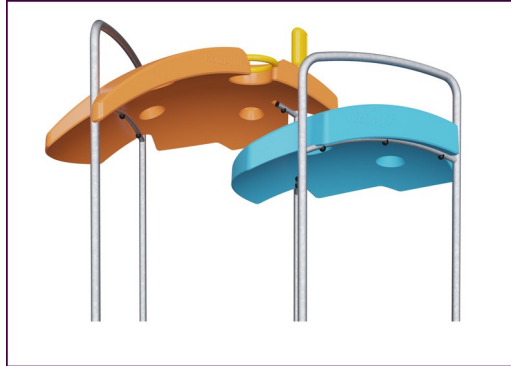


# Pioneer

PCE200531



The Curved ELEMENTS panels are moulded of UV stabilised recyclable PE using 33% post-consumer recycled material. With multiple options for in-build play features that also ensures a strong panel solution. Straight panels are made of KOMPAN 19mm HDPE EcoCore™ which is a highly durable, ecofriendly and recyclable material made from +95% PCM.



The ELEMENTS roofs are made of recyclable PE made from 33% post consumer recycled materials with a minimum wall thickness of 5 mm to ensure high durability in all climates around the world. The steel pipes are hot dip galvanised inside and outside for maximum durability.



ELEMENTS products are available in three different colour combinations: classic blue & green, blossom orange & yellow, nature lime and green.

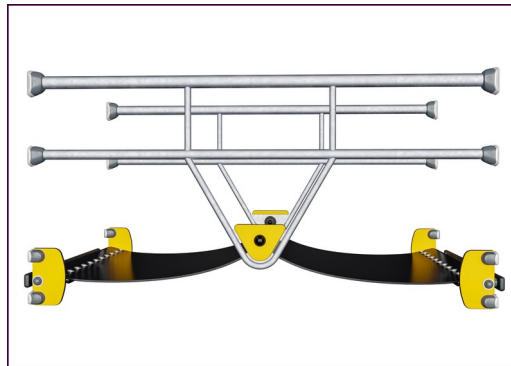
Item no. PCE200531-0602

## Installation Information

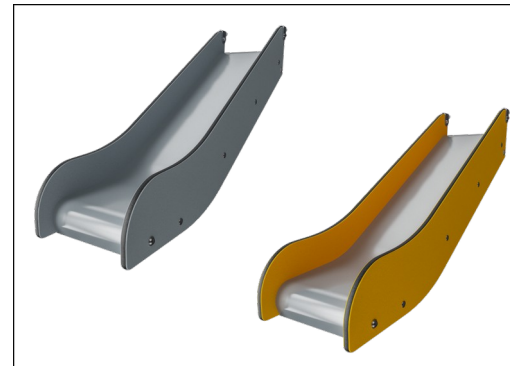
|                          |                          |
|--------------------------|--------------------------|
| Max. fall height         | 100 cm                   |
| Safety surfacing area    | 69.9 m <sup>2</sup>      |
| Total installation time  | 42.3                     |
| Excavation volume        | 0.69 m <sup>3</sup>      |
| Concrete volume          | 0.17 m <sup>3</sup>      |
| Footing depth (standard) | 60 cm                    |
| Shipment weight          | 1,463 kg                 |
| Anchoring options        | Surface ✓<br>In-ground ✓ |



The main posts are made of high quality pregalvanized steel with powder coated top finish. Post tops are closed with caps of UV stabilized nylon (PA6). The grey colored molded decks are made of 75% post-consumer waste PP material with a non-skid pattern and texture surface. All decks are supported by unique designed low-carbon aluminum profiles with multiple attachment options.



ELEMENTS rubber membranes are conveyer belt made of layers of rubber mixed of natural rubber and SBR rubber, and embedded with layers of armouring made of woven PE and PA. The thickness 8mm ensures high durability in any environment.



The special designed slide for under 2 year old's as specified in ASTM F2373 is made of EcoCore™ side panels of 95% post-consumer recycled waste and a molded PE slide bed.



# Sustainability Data

PCE200531



| Cradle to Gate A1-A3  | Total CO <sub>2</sub> emission | CO <sub>2</sub> e/kg    | Recycled materials |
|-----------------------|--------------------------------|-------------------------|--------------------|
|                       | kg CO <sub>2</sub> e           | kg CO <sub>2</sub> e/kg | %                  |
| <b>PCE200531-0602</b> | 2,970.70                       | 2.66                    | 39.50              |

The overall framework applied for these factors is the Environmental Product Declaration (EPD), which quantifies "environmental information on the life cycle of a product and enable comparisons between products fulfilling the same function" (ISO, 2006). This follows the structure and applies a Life-Cycle Assessment approach to the entire Product stage from raw material through manufacturing (A1-A3))

**Kompan A/S**  
C.F. Tietgens Boulevard 32C  
DK-5220 Odense SØ  
Denmark



## Verification of CO<sub>2</sub> calculation of: Play systems



Data version no. 2023-10-05

The CO<sub>2</sub> calculation and data are in compliance with the principles of a carbon footprint impact according to the GHG protocol (Greenhouse Gas Protocol), Scope 3, cradle to gate related to all individual components in the product category: "Play systems" represented by item no.: PCM200321-0950.

(Scope 3 emissions include emission sources in the upstream and downstream value chain).

**Date: 30. October 2023 | Valid until: 30. October 2025**

Verified by:

Julie Marie Vejsgaard Larsen, LCA & EPD Consultant

Verification based on report: Validation of CO<sub>2</sub> calculation of 9 categories of Kompan product line, version 1.0, prepared by: Bureau Veritas HSE, Denmark: Julie M. V. Larsen.

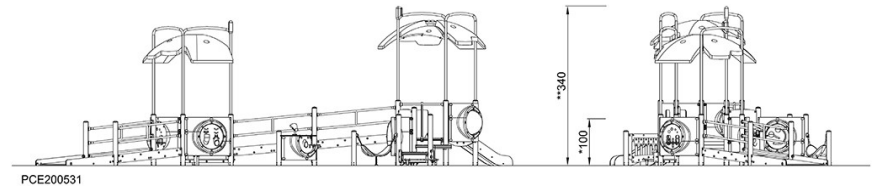
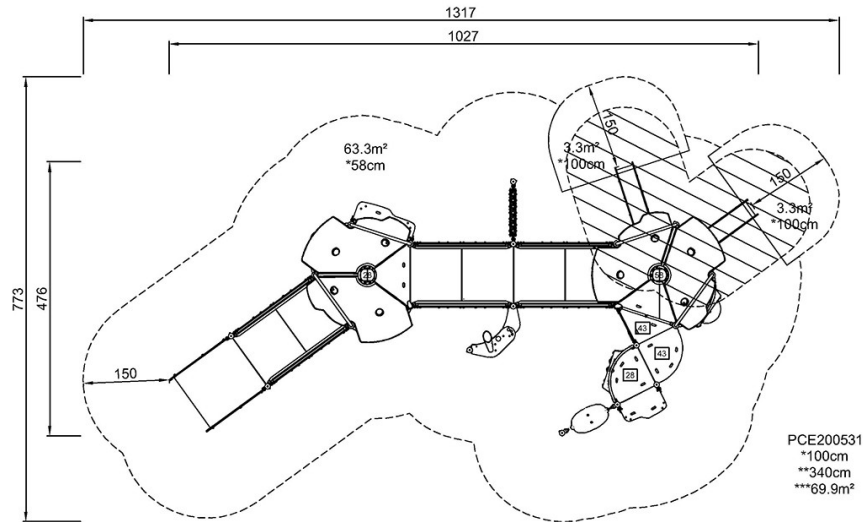
**Publication date: 30. October 2023**

By Bureau Veritas HSE  
www.bureauveritas.dk  
+45 7731 1000



\* Max fall height | \*\* Total height | \*\*\* Safety surfacing area

\* Max fall height | \*\* Total height



[Click to see TOP VIEW](#)

[Click to see SIDE VIEW](#)