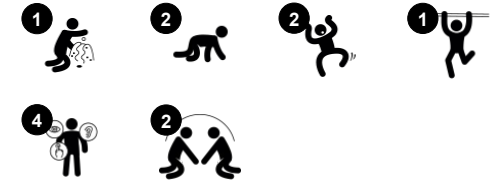


Toddler Train

M536



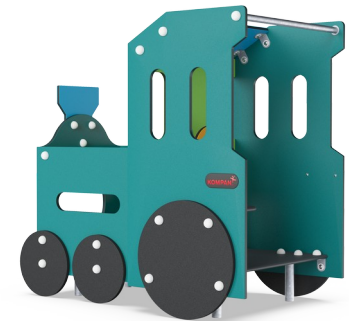
| Item no. M53601-3418P | |
|-----------------------------|---------------|
| General Product Information | |
| Dimensions LxWxH | 138x86x130 cm |
| Age group | 6m+ |
| Play capacity (users) | 4 |
| Color options | |



Wow! The Toddler Train is a huge attraction for young children. The many crawl through and meeting options offer physical and social play. The traffic theme will spur children's imagination: where are we going on the train? This will start conversations and dramatic play. Stimulating language development in the young children. The toddlers enjoy moving their

bodies around the train. This trains the cross-coordination, which is crucial to train for toddlers. The cross-coordination supports the functions in the brain that facilitate later reading skills. Thanks to the many openings and holes, social interactions are supported from the inside to the outside. Care giver interaction is made easier, and the holes invite a nice round

of peek-a-boo. In spite of transparency, the Train still provides corners for toddlers to play den in.

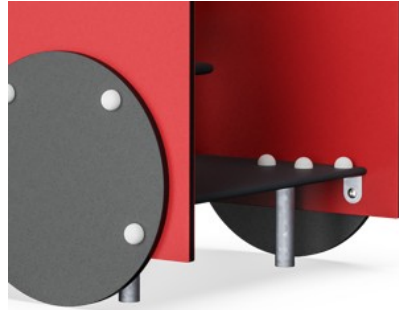


Toddler Train

M536



Panels of 19mm EcoCore™. EcoCore™ is a highly durable, eco friendly material, which is not only recyclable after use, but also consists of material produced from +95% recycled post consumer material from food packing waste.



Floor is made of HPL with a thickness 10 mm and non skid surface texture according to EN 438-6. KOMPAN HPL has high wearing strength to ensure long lifetime in all climates.



Handle is made of polypropylene PP with excellent impact strength and usable within a large temperature span.

Item no. M53601-3418P

Installation Information

| | |
|--------------------------|--------------------------|
| Max. fall height | 48 cm |
| Safety surfacing area | 14.8 m ² |
| Total installation time | 5.5 |
| Excavation volume | 0.09 m ³ |
| Concrete volume | 0.00 m ³ |
| Footing depth (standard) | 60 cm |
| Shipment weight | 136 kg |
| Anchoring options | In-ground ✓ Surface ✓ |



KOMPAN GreenLine versions are designed with ultimate environmentally friendly materials with lowest possible CO2e emission factor such as EcoCore™ panels of +95% post consumer recycled ocean waste.



Sustainability Data

M536



| Cradle to Gate A1-A3 | Total CO₂ emission | CO₂e/kg | Recycled materials |
|-----------------------------|--------------------------------------|---------------------------|---------------------------|
| | kg CO ₂ e | kg CO ₂ e/kg | % |
| M53601-3418P | 155.70 | 1.75 | 58.10 |

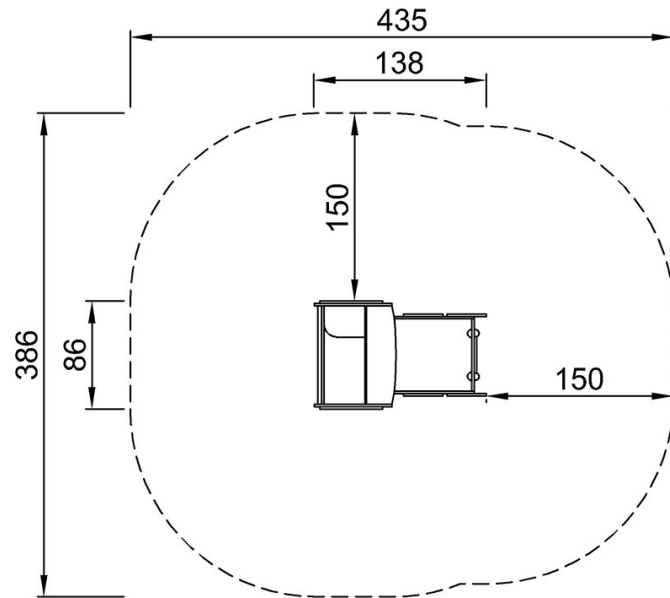
The overall framework applied for these factors is the Environmental Product Declaration (EPD), which quantifies "environmental information on the life cycle of a product and enable comparisons between products fulfilling the same function" (ISO, 2006). This follows the structure and applies a Life-Cycle Assessment approach to the entire Product stage from raw material through manufacturing (A1-A3))

Toddler Train

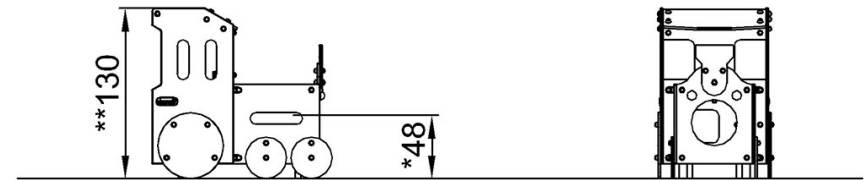
M536

* Max fall height | ** Total height | *** Safety surfacing area

* Max fall height | ** Total height



M53601
*48cm
**130cm
***14.8m²



M53601

[Click to see TOP VIEW](#)

[Click to see SIDE VIEW](#)