

# Four Tower with Wobble Bridge and Tunnel

KPL4005

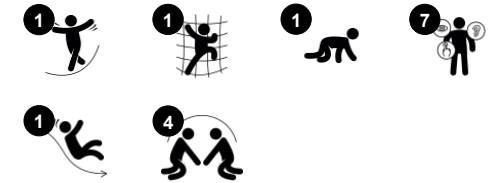
**KOMPAN**  
Let's play



Item no. KPL400511-0601

## General Product Information

Dimensions LxWxH	441x229x214 cm
Age group	1+
Play capacity (users)	18
Colour options	<span style="color: red;">●</span> <span style="color: green;">●</span>



The Four Tower with Two Bridges offers a wealth of diverse climbing, crawling, and sliding experiences. The diversity in play experiences makes children want to come back again and again. The different bridges use their muscles and motor skills to stimulate play events: the step bridge offers graded access, each platform offering a point for a break or a

meeting. Children can slide or crawl through the tunnel, both great activities for cross-body coordination. This trains the cooperation between the left and right side of the brain which is necessary for reading skills. The slide stimulates spatial awareness which is needed for navigating space, e.g. in traffic, securely. The inclined bridge with skid preventive floor

details supports less physically confident users. This is the obvious play activity for children with physical disabilities, with a perfect distance of access point on the ground level to the egress point.



# Four Tower with Wobble Bridge and Tunnel

KPL4005

**KOMPAN**  
Let's play



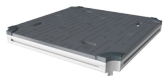
## Tunnel

**Physical:** the children crawl through the tunnel, developing motor skills such as cross-body coordination and proprioception. **Social-Emotional:** turn-taking when passing each other.



## Slide

**Physical:** develops spatial awareness, sense of balance and trains core muscles when sitting upright going down. **Social-Emotional:** empathy stimulated by turn-taking. **Cognitive:** young children develop their understanding of space, speed and distances when sliding down.



## Platform

**Social-Emotional:** courage, self-confidence, consideration and turn-taking are built when children share the platform.



## Trekking bridge

**Physical:** the wobbly bridge trains balance and coordination as well as spatial awareness: when children cross the bridge by running or jumping. **Social-Emotional:** turn-taking and consideration when passing each other. Cooperation and socialising with others in and around the bridge.



## Climb bridge

**Physical:** skid-preventive cross-bars function as support for toddlers, supporting spatial awareness

# Four Tower with Wobble Bridge and Tunnel

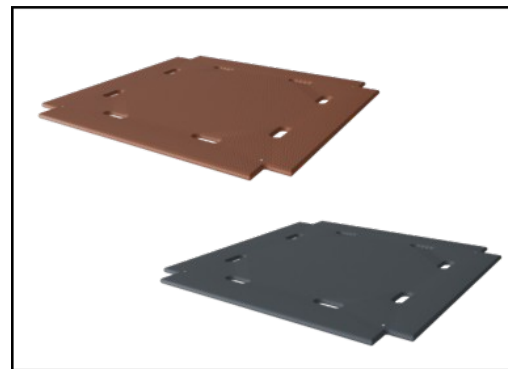
KPL4005



Panels of 19mm EcoCore™. EcoCore™ is a highly durable, eco-friendly material, which is not only recyclable after use but also consists of a core produced from 100% recycled material.



The main tower posts are available in two types of material: European pine wood posts pressure impregnated Class 3 with Tanalith E preservative, or aluminium with an anodised surface treatment.



Floors and panel activities are manufactured from high-pressure laminate HPL with a thickness 17.8mm and non-skid surface texture.

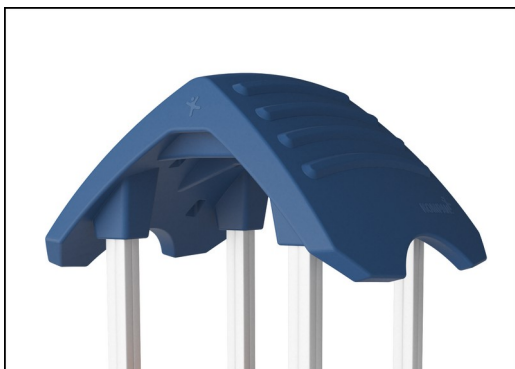
Item no. KPL400511-0601

### Installation Information

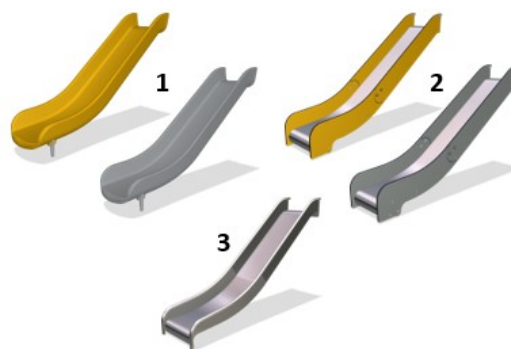
Max. fall height	100 cm
Safety surfacing area	29.5 m <sup>2</sup>
Total installation time	17.3
Excavation volume	0.97 m <sup>3</sup>
Concrete volume	0.00 m <sup>3</sup>
Footing depth (standard)	60 cm
Shipment weight	464 kg
Anchoring options	In-ground ✓ Surface ✓

### Warranty Information

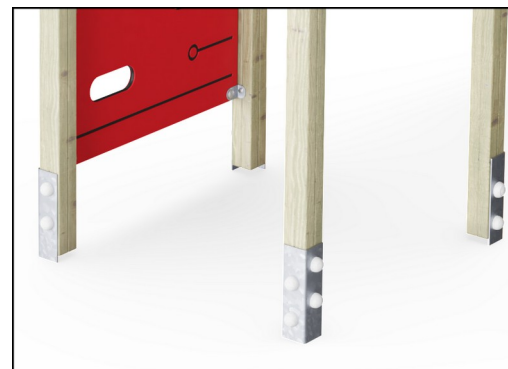
Aluminum	15 years
EcoCore HDPE	Lifetime
Hollow PE parts	10 years
Pinewood	10 years
Spare Parts Guarantee	10 years



The large hollow components are made of 100% recyclable PE. The roof displayed is moulded in one piece with minimum 5,5mm wall thickness to ensure high durability in all climates around the world.



Slides are available in three different materials: moulded on piece PE slides, combined EcoCore™ sides and stainless steel slide bed t=2mm. Full stainless steel AISI304 t=2mm.



The main posts are equipped with hot-dip galvanised steel footings. The steel footings elevate the posts position 20mm from ground level to avoid contact with surfacing material.



# Sustainability Data

KPL4005



Cradle to Gate A1-A3	Total CO <sub>2</sub> emission	CO <sub>2</sub> e/kg	Recycled materials
	kg CO <sub>2</sub> e	kg CO <sub>2</sub> e/kg	%
<b>KPL400511-0601</b>	505.33	1.42	33.10

The overall framework applied for these factors is the Environmental Product Declaration (EPD), which quantifies "environmental information on the life cycle of a product and enable comparisons between products fulfilling the same function" (ISO, 2006). This follows the structure and applies a Life-Cycle Assessment approach to the entire Product stage from raw material through manufacturing (A1-A3))

**Kompan A/S**  
 C.F. Tietgens Boulevard 32C  
 DK-5220 Odense SØ  
 Denmark



## Verification of CO<sub>2</sub> calculation of: Play systems



Data version no. 2023-10-05

The CO<sub>2</sub> calculation and data are in compliance with the principles of a carbon footprint impact according to the GHG protocol (Greenhouse Gas Protocol), Scope 3, cradle to gate related to all individual components in the product category: "Play systems" represented by item no.: PCM200321-0950.

(Scope 3 emissions include emission sources in the upstream and downstream value chain).

**Date: 30. October 2023 | Valid until: 30. October 2025**

Verified by:

Julie Marie Vejsgaard Larsen, LCA & EPD Consultant

Verification based on report: Validation of CO<sub>2</sub> calculation of 9 categories of Kompan product line, version 1.0, prepared by: Bureau Veritas HSE, Denmark: Julie M. V. Larsen.

**Publication date: 30. October 2023**

By Bureau Veritas HSE  
 www.bureauveritas.dk  
 +45 7731 1000

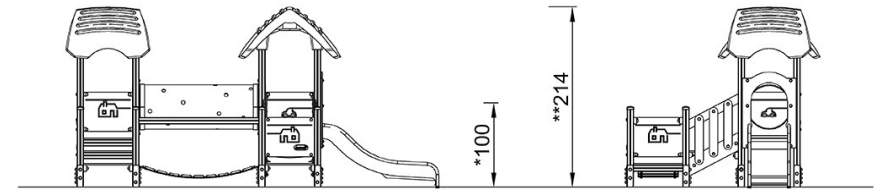
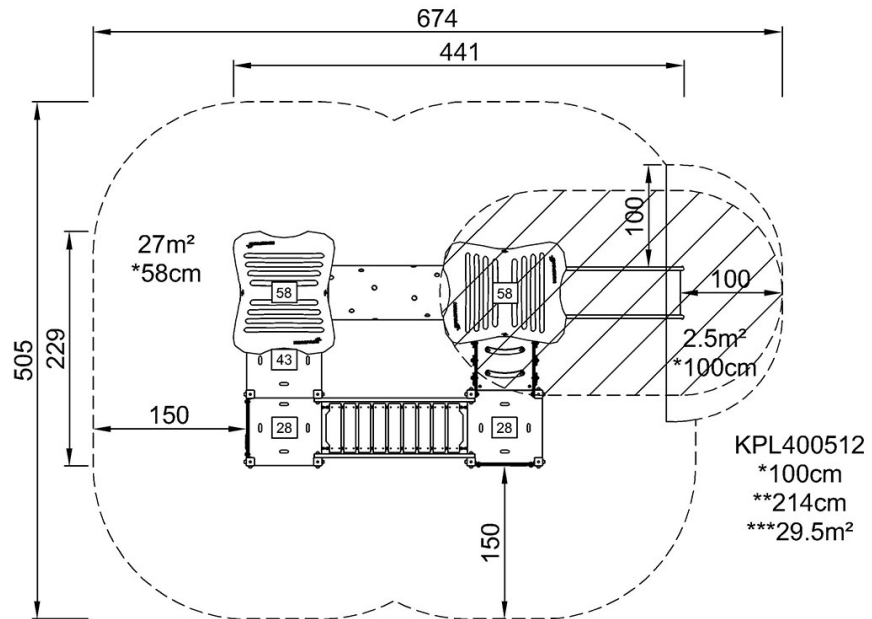


# Four Tower with Wobble Bridge and Tunnel

KPL4005

\* Max fall height | \*\* Total height | \*\*\* Safety surfacing area

\* Max fall height | \*\* Total height



KPL400512

[Click to see TOP VIEW](#)

[Click to see SIDE VIEW](#)