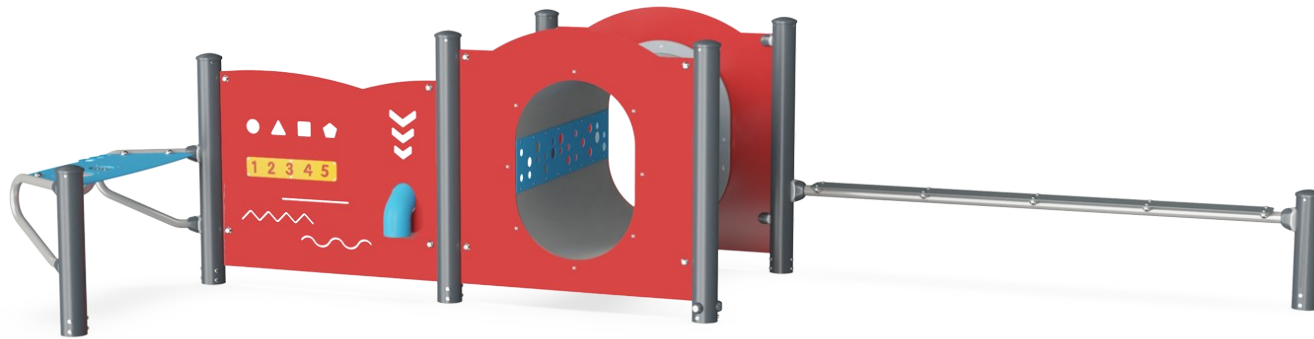
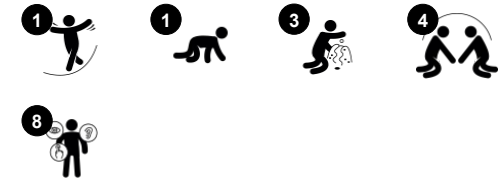


Lincoln Play & Stay

PCX0003



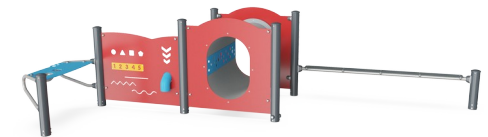
Item no. PCX000300-0602	
General Product Information	
Dimensions LxWxH	15'9"x7'7"x3'7"
Age group	2 - 5
Play capacity (users)	10
Color options	



The LINCOLN Play Tunnel with Play Panel, Desk, and Balance Beam is a nice ground level activity with great play value. It stimulates all 4 competencies of children's development: physical, social-emotional, cognitive, and creative. When crawling through the tunnel and walking on the balance beam children stimulate their cross coordination and balance. Both are

important for children's ability to concentrate and pay attention. Learning about geometric shapes and numbers as well as playing with the tube and desk allow for cognitive and creative stimulation when exploring and understanding cause and effect. The different activities invite many children to play together, stimulating social skills such as listening,

sharing, and cooperating.



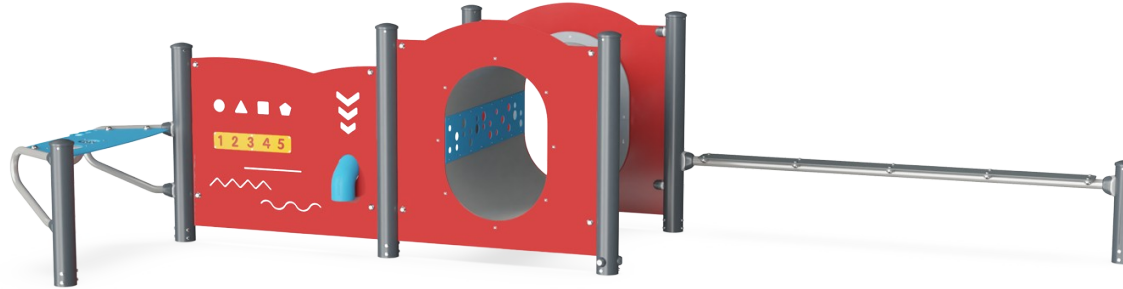
Lincoln Play & Stay

PCX0003



Balance beam

Physical: trains the sense of balance, fundamental for all other motor skills that make it possible to navigate the world confidently and securely. **Social-Emotional:** turn-taking skills and negotiation when crossing each other on the beam. Room for a seated rest and exchange.



Desk with bowl and sieve

Social-Emotional: children can gather and store materials, cooperate and take a break together. **Creative:** sand can be shifted through the sieve, for understanding of cause and effect and object permanence.



Tunnel

Physical: the children crawl through the tunnel, developing motor skills such as cross-body coordination and proprioception. **Social-Emotional:** turn-taking when passing each other.



Play panel

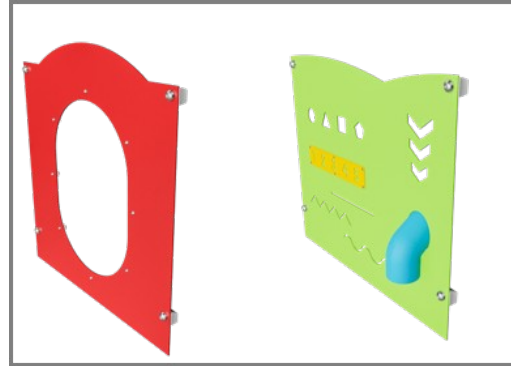
Social-Emotional: communication, listening, sharing when exploring panel with friends. **Cognitive:** stimulate children's language skills and knowledge of numbers and geometric shapes. The passing of materials through funnels supports the children's logical thinking and for younger children the understanding of object permanence: that materials don't vanish, but run through at the other end.

Lincoln Play & Stay

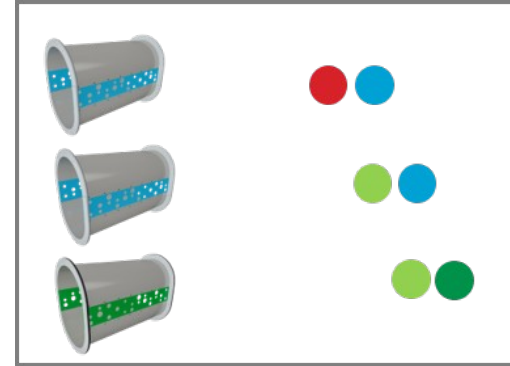
PCX0003



All steel components are made of high quality materials. The posts have an alloy with improved tensile and yield strength according to the NYCP material specification. The painted aluminum post caps are riveted to the top of the post.



All panels and one-piece welded steel grids are made of low carbon steel and corrosion treated by hot dip galvanization or metallization with a minimum thickness according to NYCP material specification.



The product is designed in three different standard color combinations: Red and light blue, Light blue and lime green, Green and lime green. The layouts of the play structures can be customized through the KOMPAN Variant Team.

Item no. PCX000300-0602

Installation Information

Max. fall height	1'3"
Safety surfacing area	384ft ²
Total installation time	8.4
Excavation volume	0.17yd ³
Concrete volume	0.07yd ³
Footing depth (standard)	2'0"
Shipment weight	705lbs
Anchoring options	In-ground <input checked="" type="checkbox"/>

Warranty Information

EcoCore HDPE	Lifetime
HDG post	Lifetime
HPL decks	15 Years
Ropes & nets	10 Years
Spare Parts Availability	10 Years

Elevated activities 0	Accessible elevated activities	Accessible ground level activities	Accessible ground level play types
Present	0	4	3
Required	0	3	3

**ASTM
F1487**
compliant

Sustainability Data

PCX0003



Cradle to Gate A1-A3	Total CO ₂ emission	CO ₂ e/kg	Recycled materials
	kg CO ₂ e	kg CO ₂ e/kg	%
PCX000300-0602	920.90	3.57	48.80

The overall framework applied for these factors is the Environmental Product Declaration (EPD), which quantifies "environmental information on the life cycle of a product and enable comparisons between products fulfilling the same function" (ISO, 2006). This follows the structure and applies a Life-Cycle Assessment approach to the entire Product stage from raw material through manufacturing (A1-A3))

Kompan A/S
 C.F. Tietgens Boulevard 32C
 DK-5220 Odense SØ
 Denmark



Verification of CO₂ calculation of: Play systems



Data version no. 2023-10-05

The CO₂ calculation and data are in compliance with the principles of a carbon footprint impact according to the GHG protocol (Greenhouse Gas Protocol), Scope 3, cradle to gate related to all individual components in the product category: "Play systems" represented by item no.: PCM200321-0950.

(Scope 3 emissions include emission sources in the upstream and downstream value chain).

Date: 30. October 2023 | Valid until: 30. October 2025

Verified by:

Julie Marie Vejsgaard Larsen, LCA & EPD Consultant

Verification based on report: Validation of CO₂ calculation of 9 categories of Kompan product line, version 1.0, prepared by: Bureau Veritas HSE, Denmark: Julie M. V. Larsen.

Publication date: 30. October 2023

By Bureau Veritas HSE
 www.bureauveritas.dk
 +45 7731 1000

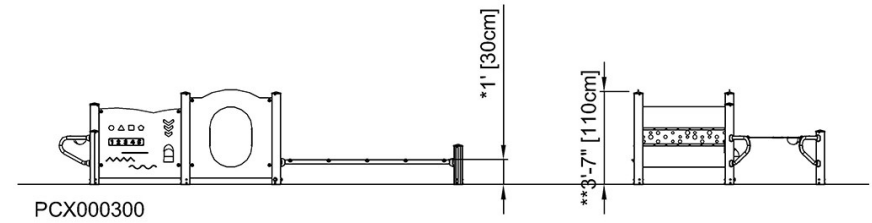
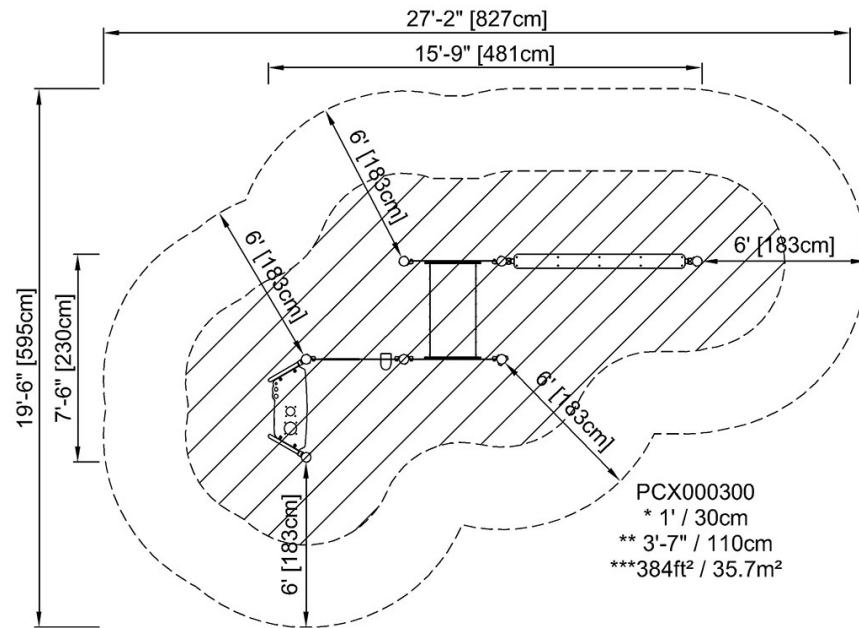


Lincoln Play & Stay

PCX0003

* Max fall height | ** Total height | *** Safety surfacing area

* Max fall height | ** Total height



[Click to see TOP VIEW](#)

[Click to see SIDE VIEW](#)