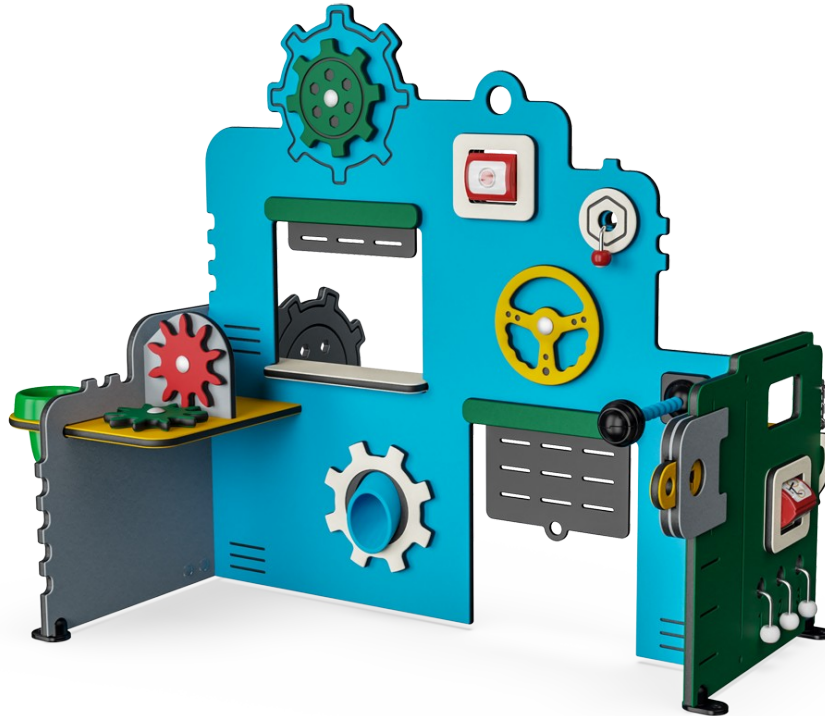
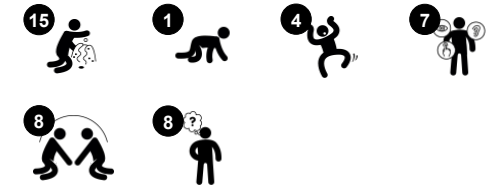


Service & Workshop

MSV602



Item no. MSV60200-0201	
General Product Information	
Dimensions LxWxH	147x120x121 cm
Age group	6m+
Play capacity (users)	8
Colour options	



The Service & Workshop is a play world for infants and toddlers loaded with play possibilities. Infants and toddlers explore, using the structure as a support for raising, crawling, and walking around. Numerous play features motivate social play and support child development. The Stop-Go sign, the gears, and strings unite children that way. The Workshop

side has tangible themes: gearing and steering wheels and microphone. The Service side has a pressure measurer and bell. The pushing, pulling, and investigation of the numerous manipulative play items, stimulate the child's logical thinking skills. The themes inspire dramatic play which is phenomenal for language development – the main factor for

learning, friendship-building, and life success.



Data is subject to change without prior notice.

Service & Workshop

MSV602



String with knobs

Social-Emotional: turn-taking and cooperation are supported when pulling the string from side to side with friends or caregiver. **Cognitive:** an understanding of object permanence is supported when the knob disappears and reappears when pulled. **Creative:** leaving the knob in different positions can support symbolic and creative thinking.



Tumbler

Social-Emotional: cooperation skills and turn-taking are supported when turning the tumbler from each side. **Cognitive:** cause and effect understanding for toddlers when spinning the tumbler.



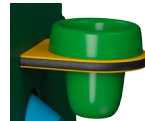
Microphone

Cognitive: inspires dramatic play which stimulates language development. Cause and effect understanding is supported when discovering that the microphone. **Creative:** positioning the microphone in different positions can support symbolic thinking.



Funnel

Social-Emotional: trains cooperation and turn-taking as children put materials into the funnel. **Cognitive:** the passing of materials through funnels supports the children's logical thinking and for younger children the understanding of object permanence: that materials don't vanish but run through at the other end.



Pot

Cognitive: filling, removing and emptying the pot stimulates cause and effect understanding and logical thinking when empty or full. **Creative:** placing the pot in other areas of the play space in creative ways can support symbolic and creative thinking.



Gear wheels

Social-Emotional: cooperation skills and turn-taking are supported when turning the gearing wheel. **Cognitive:** cause and effect understanding and logical thinking are supported when turning the gears.



Bell

Cognitive: understanding cause and effect when ringing bell. **Creative:** leaving a mark in creating a sound rhythm when ringing or knocking the bell.

Service & Workshop

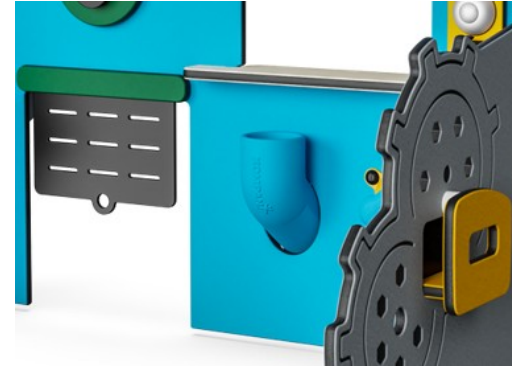
MSV602



Panels of 19mm EcoCore™. EcoCore™ is a highly durable, eco-friendly material, which is not only recyclable after use but also consists of a core produced from 100% recycled material.



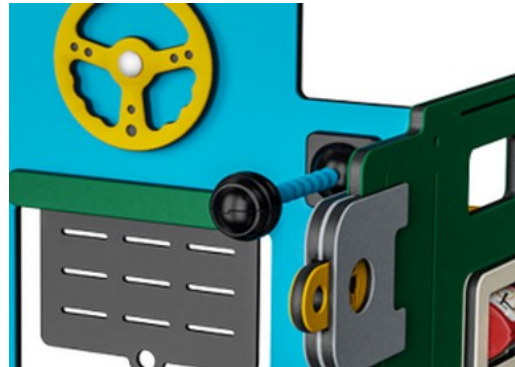
Corocord membranes consist of friction-proof rubberised material of conveyor belt quality with excellent UV resistance. Tested and compliant with REACH requirements for PAH. Embedded is a four-layered armouring made of woven polyester. The armouring and the two surface layers result in a total thickness of 7.5 mm.



The sand pipe is made from rotomoulded PE, which is a durable material which is suitable for high-temperature span climates.



Pots are made of pressure moulded high-quality nylon (PA6) which has good wearing and impact strength.



The microphone is made of PC and fitted on a flexible shaft of POM material.

Item no. MSV60200-0201

Installation Information

Max. fall height	0 cm
Safety surfacing area	15.1 m ²
Total installation time	6.1
Excavation volume	0.00 m ³
Concrete volume	0.00 m ³
Footing depth (standard)	0 cm
Shipment weight	52 kg
Anchoring options	Surface ✓

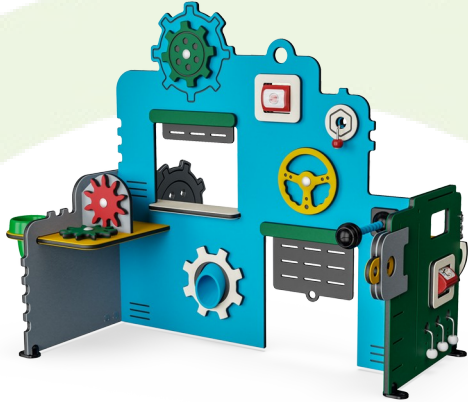
Warranty Information

EcoCore HDPE	Lifetime
Membrane	2 years
Movable Parts	2 years
PUR Components	10 years
Spare Parts Guarantee	10 years



Sustainability Data

MSV602



Cradle to Gate A1-A3	Total CO ₂ emission	CO ₂ e/kg	Recycled materials
	kg CO ₂ e	kg CO ₂ e/kg	%
MSV60200-0201	55.80	1.13	85.74

The overall framework applied for these factors is the Environmental Product Declaration (EPD), which quantifies "environmental information on the life cycle of a product and enable comparisons between products fulfilling the same function" (ISO, 2006). This follows the structure and applies a Life-Cycle Assessment approach to the entire Product stage from raw material through manufacturing (A1-A3))

Kompan A/S
 C.F. Tietgens Boulevard 32C
 DK-5220 Odense SØ
 Denmark



Verification of CO₂ calculation of: Themed play systems



Data version no. 2023-10-05

The CO₂ calculation and data are in compliance with the principles of a carbon footprint impact according to the GHG protocol (Greenhouse Gas Protocol), Scope 3, cradle to gate related to all individual components in the product category: "Themed play systems" represented by item no.: MSC641100-3717P.

(Scope 3 emissions include emission sources in the upstream and downstream value chain).

Date: 30. October 2023 | Valid until: 30. October 2025

Verified by:

Julie Marie Vejsgaard Larsen, LCA & EPD Consultant

Verification based on report: Validation of CO₂ calculation of 9 categories of Kompan product line, version 1.0, prepared by: Bureau Veritas HSE, Denmark: Julie M. V. Larsen.

Publication date: 30. October 2023

By Bureau Veritas HSE
 www.bureauveritas.dk
 +45 7731 1000

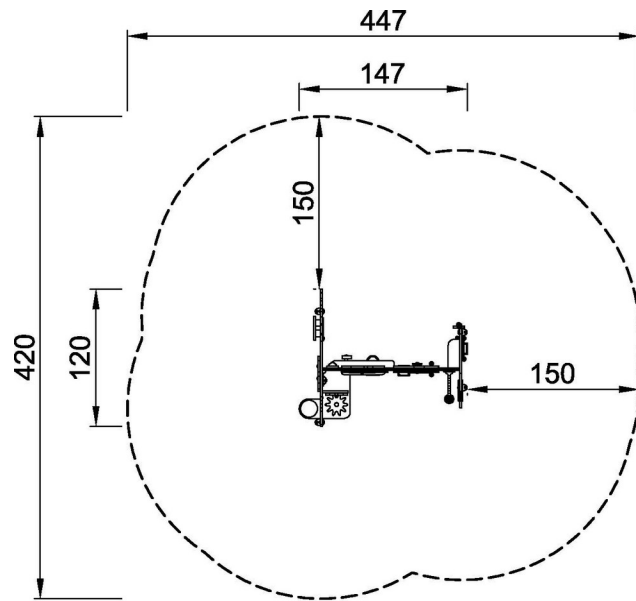


Service & Workshop

MSV602

* Max fall height | ** Total height | *** Safety surfacing area

* Max fall height | ** Total height



MSV60200-0201

**121cm
***15.1m²



MSV60200-0201

[Click to see TOP VIEW](#)

[Click to see SIDE VIEW](#)