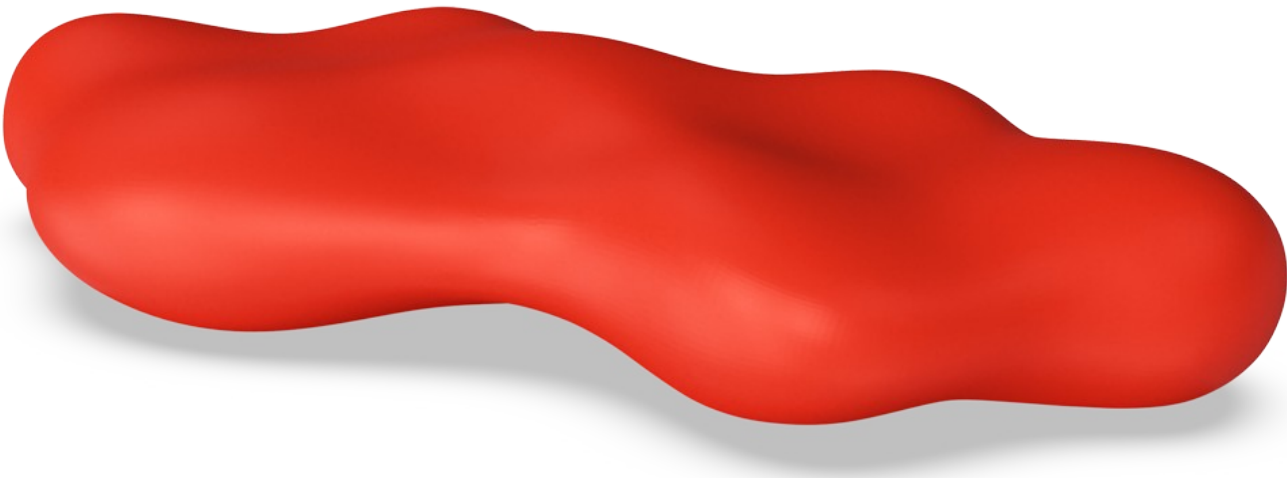


Lava

TPP29670



Item no. TPP29670-0001	
General Product Information	
Dimensions LxWxH	8'6"x3'11"x1'8"
Age group	
Play capacity (users)	
Color options	<div><div></div><div></div><div></div><div></div><div></div></div>

The LOOP Lava invites informal breaks and creative expression while people sit and interact around it. This organic seating unit fits into urban spaces, parks, schools, institutions, and company headquarters alike.

Lava

TPP29670



The Loops modular elements are made of rotation-molded polyethylene (PE) with a 6-7mm thickness. The Loops are UV-resistant, have excellent impact strength, and are usable within a large temperature span.

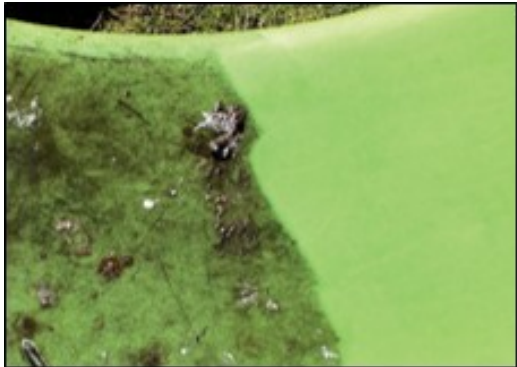


The product molds are textured through abrasive blasting, enhancing surface friction and reducing slipperiness, ensuring a safer experience.



The Loops can be anchored to the ground by filling them with water or sand using integrated plugs. Alternatively, they can be secured using surface or ground brackets.

Item no. TPP29670-0001	
Installation Information	
Total installation time	0.0
Excavation volume	0yd³
Concrete volume	0yd³
Footing depth (standard)	0'0"
Shipment weight	82lbs
Anchoring options	In-ground ✓
	Surface ✓



This product withstands most cleaning agents and chemicals and can be cleaned using a high-pressure cleaner. The color can be revived using vinyl cleaner or similar.