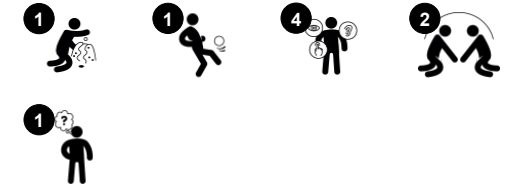


Magnetic White Board

PCM0013



产品编号 PCM001308-0902	
产品信息概览	
长宽高尺寸	166x12x140 cm
适用年龄段	2+
容纳人数	4
颜色选择	



This large magnetic white board will support hours of play and learning in an outdoor learning environment or playground. The large space is plenty for many children to join in, which will help them to develop fine motor skills when drawing, and language and literacy skills when making signs. The large size supports social play, because there is plenty of room for

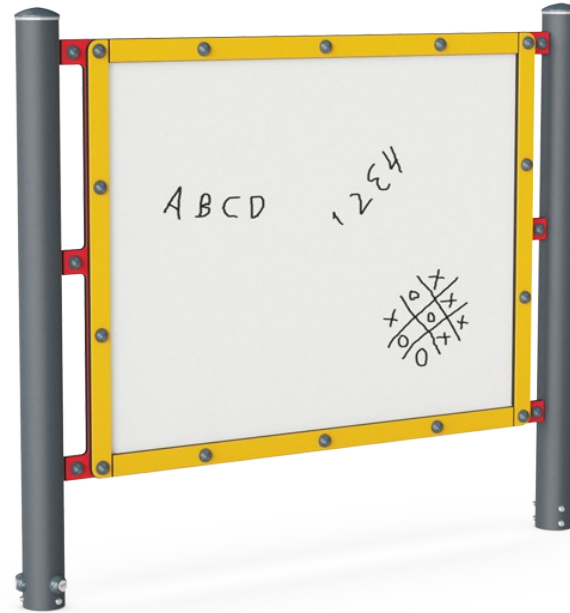
interaction and cooperation. White boards can have direct benefits for learning, and they also enhance a variety of dramatic play scenarios, from playing school to making a sign for treasure hunting games. There are cognitive benefits to drawing and leaving your mark, because it stimulates brain development. The magnetic feature can also spark conversations

about the magnetic properties of objects. All around fun for curious minds!



Magnetic White Board

PCM0013



Labyrinth panel

社交情感：与朋友一起探索迷宫时可以进行交流与合作。**认知能力：**在回忆迷宫路线时提高记忆能力

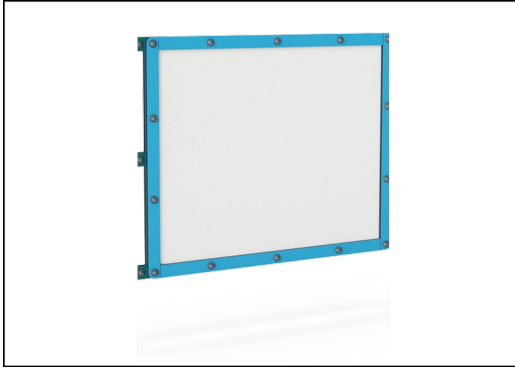


Whiteboard

社交情感：黑板的宽度适合儿童小组合作和交流想法。**创造力：**绘画和留下自己的印记能激发创造性思维。

Magnetic White Board

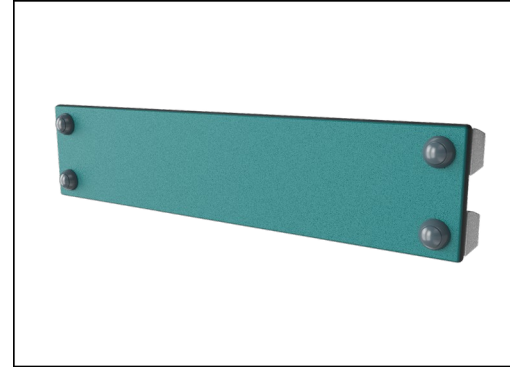
PCM0013



板材是用陶钢做的。陶瓷钢具有较高的耐腐蚀性，完全可回收利用。



立柱是由欧洲符合可持续来源的松木制成。根据 EN335 标准，木材用 Tanalith E3475 标准进行 3 级压力浸渍（相当于 NTR AB 级）。



19 毫米 EcoCore™ 面板。EcoCore™ 是一种高度耐用、环保的材料，不仅在使用后可回收利用，而且还包含由 100 % 食品包装可循环材料制成的芯。

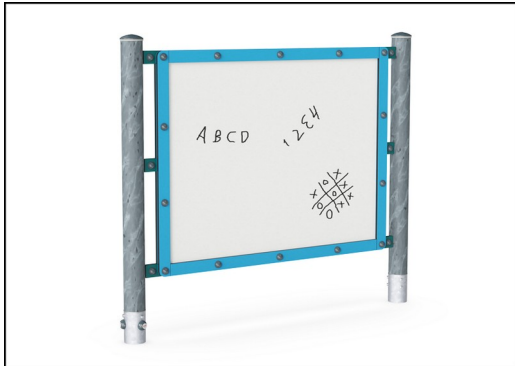
产品编号 PCM001308-0902

安装信息

最大跌落高度	0 cm
安全面积	12.3 m ²
安装总时长	3.8
开挖量	0.05 m ³
混凝土使用量	0.00 m ³
标准入地深度	85 cm
运输重量	86 kg
固定选项	地表 ✓ 入地 ✓

质保信息

EcoCore HDPE	终身质保
立柱	10 年
承保零部件	10 年



KOMPAN 环保系列产品采用终极环保材料设计，具有将二氧化碳排放当量系数降至最低的可能性。如 100% 消费后的海洋可循环材料制成的 EcoCore™ 面板。



Sustainability Data

PCM0013



从原材料到成品

CO₂ 排放总量

CO₂ 排放量 / 千克

回收的原料

kg CO₂e

kg CO₂e/kg

%

PCM001308-0950

80.08

1.16

82.96

PCM001308-0902

95.25

1.56

76.62

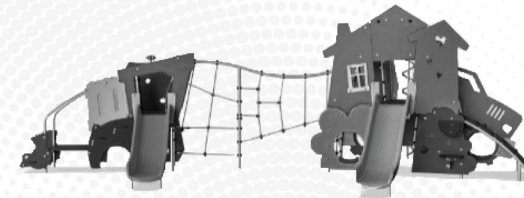
这些因素采用的总体框架为环保产品声明 (EPD), 该声明可量化“产品生命周期的环保信息, 并对相同功能的产品进行对比”(ISO, 2006)。在遵循该框架的同时, 对从原材料到制造的整个产品阶段 (A1-A3) 应用生命周期评估法。

Kompan A/S

C.F. Tietgens Boulevard 32C
DK-5220 Odense SØ
Denmark



Verification of CO₂ calculation of: Themed play systems



Data version no. 2023-10-05

The CO₂ calculation and data are in compliance with the principles of a carbon footprint impact according to the GHG protocol (Greenhouse Gas Protocol), Scope 3, cradle to gate related to all individual components in the product category: "Themed play systems" represented by item no.: MSC641100-3717P.

(Scope 3 emissions include emission sources in the upstream and downstream value chain).

Date: 30. October 2023 | Valid until: 30. October 2025

Verified by:

Julie Marie Vejsgaard Larsen, LCA & EPD Consultant

Verification based on report: Validation of CO₂ calculation of 9 categories of Kompan product line, version 1.0, prepared by: Bureau Veritas HSE, Denmark: Julie M. V. Larsen.

Publication date: 30. October 2023

By Bureau Veritas HSE
www.bureauveritas.dk
+45 7731 1000

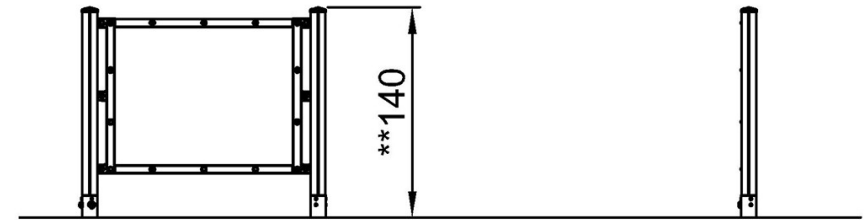
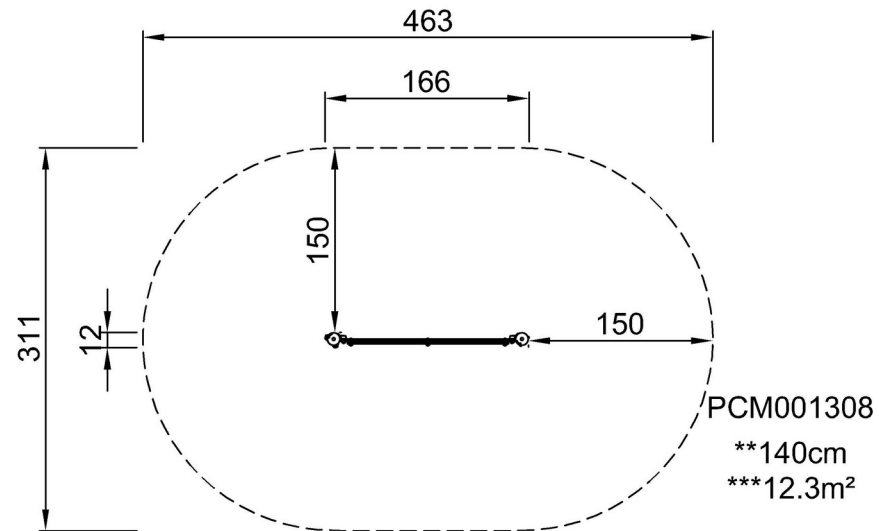


Magnetic White Board

PCM0013

最大跌落高度 | 总高度 | 安全区域

最大跌落高度 | 总高度



PCM001308
1:100

[点击查看俯视图](#)

[点击查看侧面图](#)