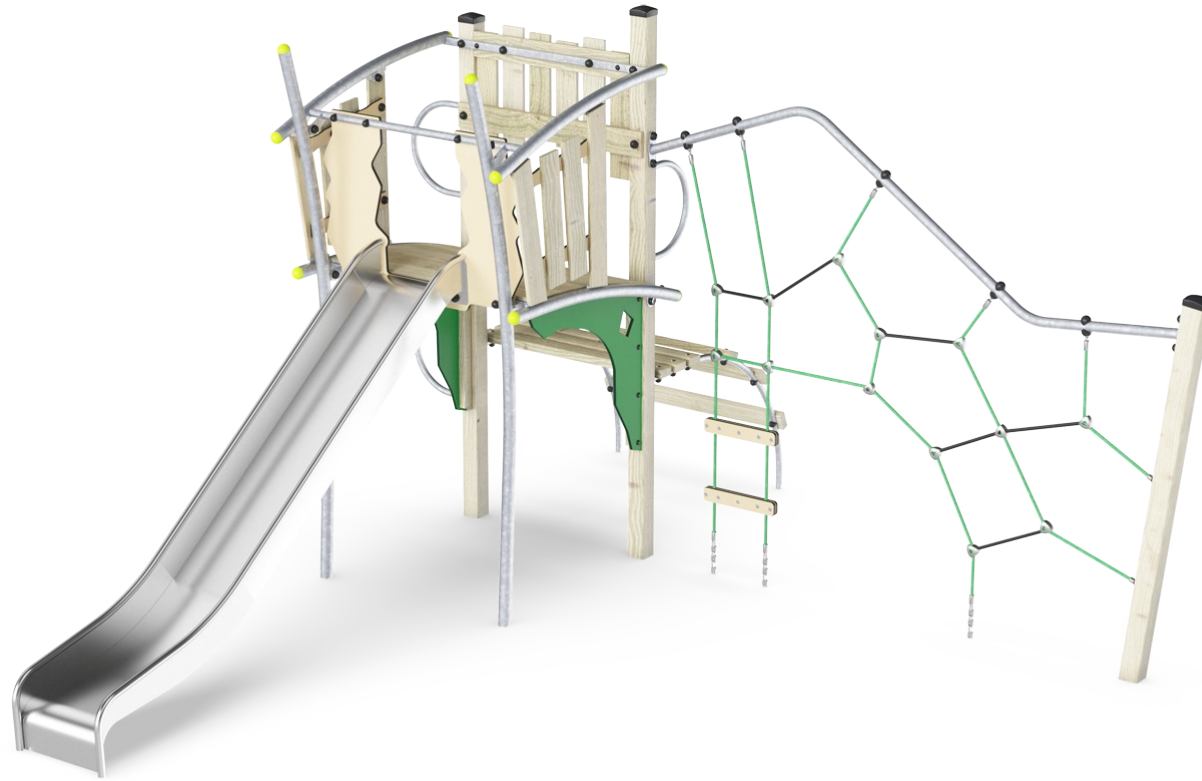


Xplorer

NAT525

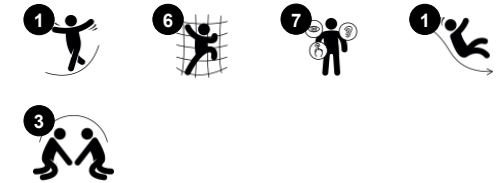
KOMPANI
Let's play



Item no. NAT525-0912

General Product Information

Dimensions LxWxH	428x470x267 cm
Age group	4+
Play capacity (users)	9
Colour options	



The Xplorer hugely attracts world explorers among school-age children with its fascinating variety of thrilling play activities. The 5 varied climbs and crawls via nets, ladders, floors, and climbing tubes to the slide stimulate children's balance and cross-coordination, and the proprioception: The variety of inclined, straight, swaying and firm climbs provide fun challenges

for all and ways up and around the Xplorer for bigger and lesser daredevils. The motor skills trained are important for children's physical confidence and their security in moving, for instance in the street. The senses of balance and space are trained to whiz down the slide. The sense of balance is fundamental for all other physical skills. The platforms and nets

are nice rest and meeting points for socialising with friends.



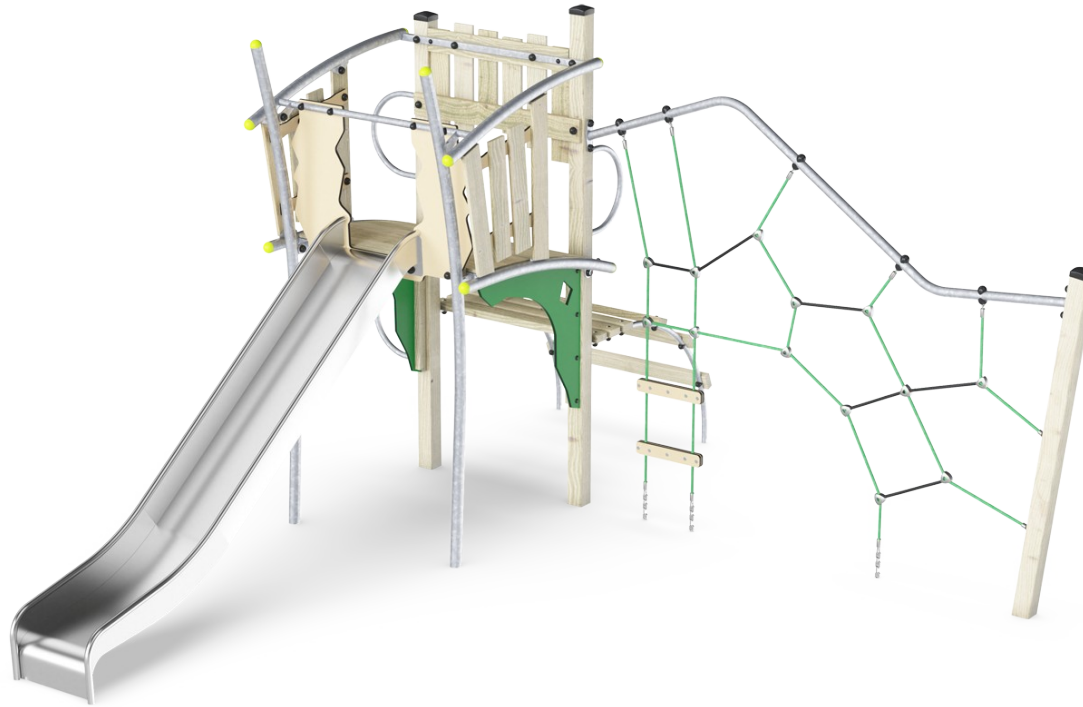
Xplorer

NAT525



Climbing net

Physical: children develop cross-body coordination and muscle strength. The asymmetry of the net challenges the children's climbing and crawling through. **Social-Emotional:** the big meshes allow for more children seated together, sharing.



Slide

Physical: develops spatial awareness, sense of balance and trains core muscles when sitting upright going down. **Social-Emotional:** empathy stimulated by turn-taking. **Cognitive:** young children develop their understanding of space, speed and distances when sliding down.

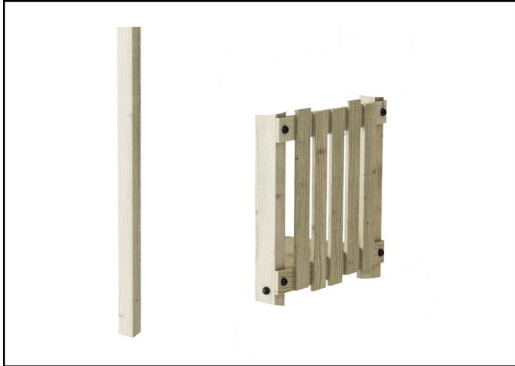


Inclined platform

Physical: trains the sense of balance and space. **Social-Emotional:** the room allows for more children being together

Xplorer

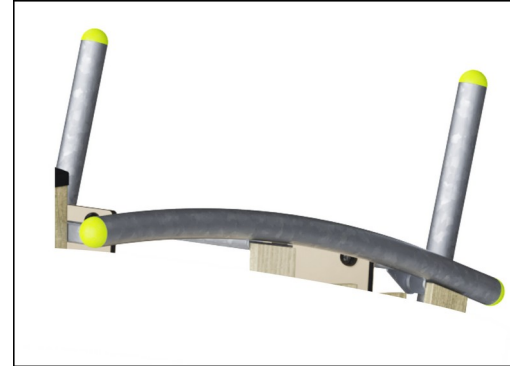
NAT525



Posts and boards are made of pine wood from sustainable European sources. The wood is pressure impregnated Class 3 with Tanalith E. On request it can be supplied as FSC® Certified (FSC® C004450).



Panels of 19mm EcoCore™. EcoCore™ is a highly durable, eco-friendly material, which is not only recyclable after use but also consists of a core produced from 100% recycled material.



The steel surfaces are hot-dip galvanised inside and outside with lead-free zinc. The galvanisation has excellent corrosion resistance in outside environments and requires low maintenance.



Corocord ropes of UV-stabilized PES rope strands with inner steel cable reinforcement. The polyester yarn is made from +95% post-consumer materials and is inductively melted onto each strand. PES has high strength with excellent resistance to abrasion and UV radiation. The rope loops are assembled by aluminum connectors.



The post end caps are made of injection molded high quality nylon (PA6). PA6 has good wearing and impact strength and is UV stabilized. The end caps protect vertical placed posts to ensure long lifetime.



The slide is manufactured from high-quality stainless steel AISI 304. The steel is cleaned by a total pickling process after manufacturing to ensure smooth and clean gliding surfaces.

Item no. NAT525-0912

Installation Information

Max. fall height	232 cm
Safety surfacing area	38.7 m ²
Total installation time	12.7
Excavation volume	1.46 m ³
Concrete volume	0.23 m ³
Footing depth (standard)	92 cm
Shipment weight	447 kg
Anchoring options	In-ground ✓ Surface ✓

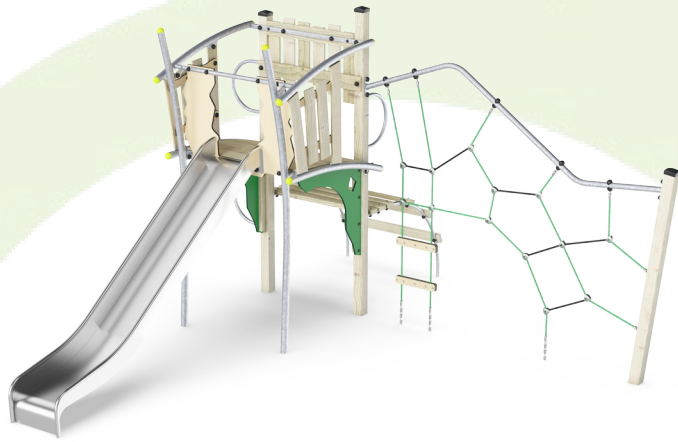
Warranty Information

EcoCore HDPE	Lifetime
Pinewood	10 years
Ropes & Nets	10 years
Spare Parts Guarantee	10 years
Stainless Steel Slide	10 years



Sustainability Data

NAT525



Cradle to Gate A1-A3	Total CO ₂ emission	CO ₂ e/kg	Recycled materials
	kg CO ₂ e	kg CO ₂ e/kg	%
NAT525-0912	660.30	1.98	40.42

The overall framework applied for these factors is the Environmental Product Declaration (EPD), which quantifies "environmental information on the life cycle of a product and enable comparisons between products fulfilling the same function" (ISO, 2006). This follows the structure and applies a Life-Cycle Assessment approach to the entire Product stage from raw material through manufacturing (A1-A3))

Kompan A/S
 C.F. Tietgens Boulevard 32C
 DK-5220 Odense SØ
 Denmark



Verification of CO₂ calculation of: Nature play



Data version no. 2023-10-05

The CO₂ calculation and data are in compliance with the principles of a carbon footprint impact according to the GHG protocol (Greenhouse Gas Protocol), Scope 3, cradle to gate related to all individual components in the product category: "Nature play" represented by item no.: NRO409-0621.

(Scope 3 emissions include emission sources in the upstream and downstream value chain).

Date: 30. October 2023 | Valid until: 30. October 2025

Verified by:

Julie Marie Vejsgaard Larsen, LCA & EPD Consultant

Verification based on report: Validation of CO₂ calculation of 9 categories of Kompan product line, version 1.0, prepared by: Bureau Veritas HSE, Denmark: Julie M. V. Larsen.

Publication date: 30. October 2023

By Bureau Veritas HSE
 www.bureauveritas.dk
 +45 7731 1000

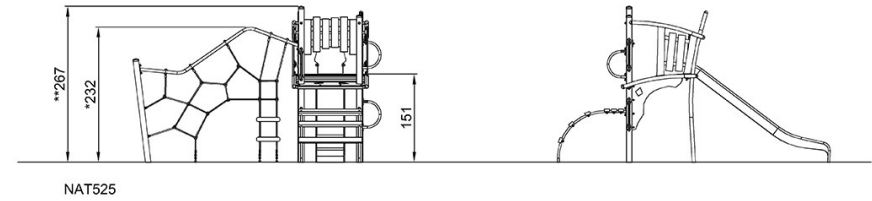
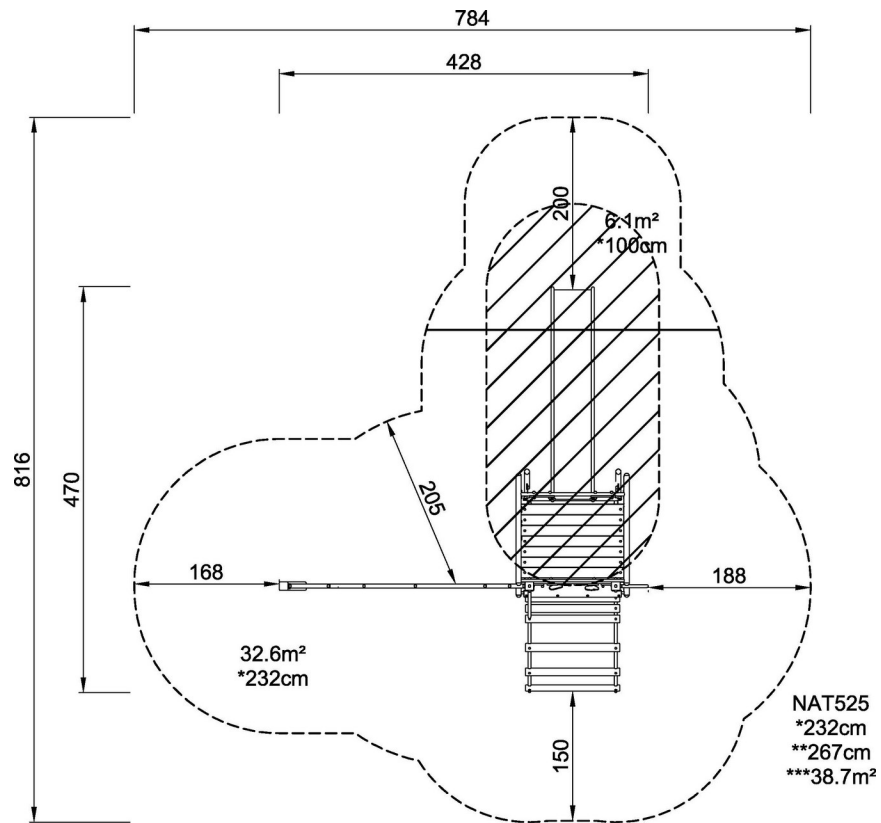


Xplorer

NAT525

* Max fall height | ** Total height | *** Safety surfacing area

* Max fall height | ** Total height



[Click to see TOP VIEW](#)

[Click to see SIDE VIEW](#)