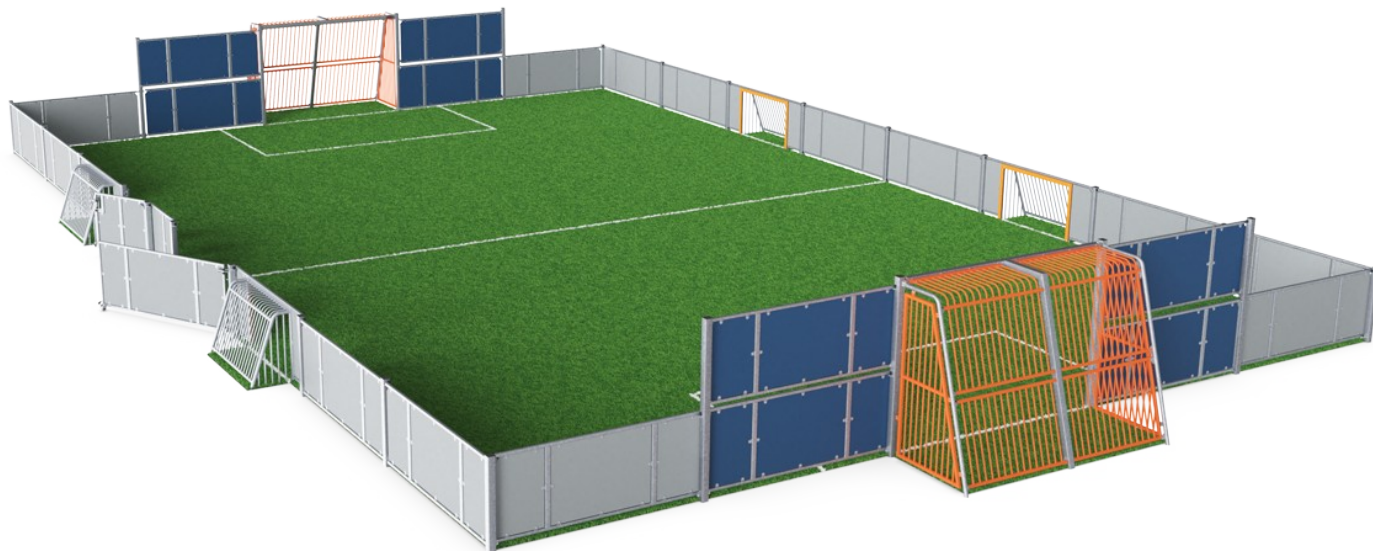


MUGA, 14 x 23m, Low 1m, Plate Design

FRE600302

KOMPAN
Let's play



Item no. FRE600302-0904	
General Product Information	
Dimensions LxWxH	2254x1411x210 cm
Age group	3+
Play capacity (users)	-
Colour options	



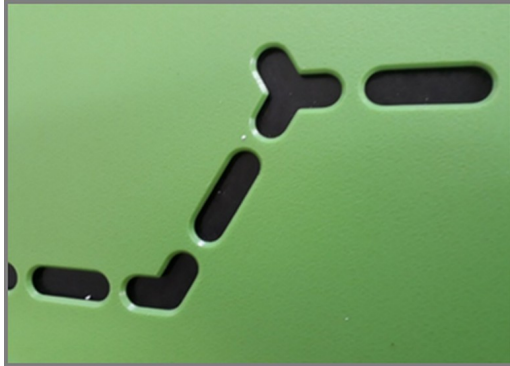
The EcoCore™ is a highly durable, eco-friendly material that is not only recyclable after use but also consists of a core produced from 100% recycled material. The core has a thickness of 15 mm and is representing 80% of the total material. The fully flat inside gives the best bounce experience when playing, this flat wall becomes a part of the game and means the

game can flow whilst adding another dimension that can challenge and develop players' tactical vision of the game. The 3 m x 2 m Multi-Goal follows the goal size of FIFA Futsal and IHF Handball regulations.



MUGA, 14 x 23m, Low 1m, Plate Design

FRE600302



The HDPE panels are available in Night Sky Blue, Grey and Orange, but if required, you can request multiple colours to match playground theming. To increase the design and play value, you can also choose HDPE panels with patterns or have logo's engraved.



All steel components are manufactured from high-quality carbon steel and are hot-dip galvanised (HDG).



The Mini goals are 147 x 90cm and the distance between the vertical \varnothing 21.3mm tubes is 68mm, small enough to keep all balls in play. The goal is framed with coloured HDPE strips to highlight the target.

Item no. FRE600302-0904	
Installation Information	
Max. fall height	0 cm
Safety surfacing area	0.0 m ²
Total installation time	64.9
Excavation volume	2.37 m ³
Concrete volume	1.64 m ³
Footing depth (standard)	85 cm
Shipment weight	3,076 kg
Anchoring options	In-ground <input checked="" type="checkbox"/> Surface <input checked="" type="checkbox"/>
Warranty Information	
EcoCore HDPE	Lifetime
HDG Post	Lifetime
Spare Parts Guarantee	10 years



Each panel has 4 Thermoplastic Vulcanizates plugs connecting the panels to the posts. The plugs reduce the vibration and therefore reduce the noise level. The plugs will also simplify installation as they come with pre-assembled nuts.



The hinges on the entrance gate are 16mm and made of Stainless Steel. The handles can be accessed from either side of the pitch.

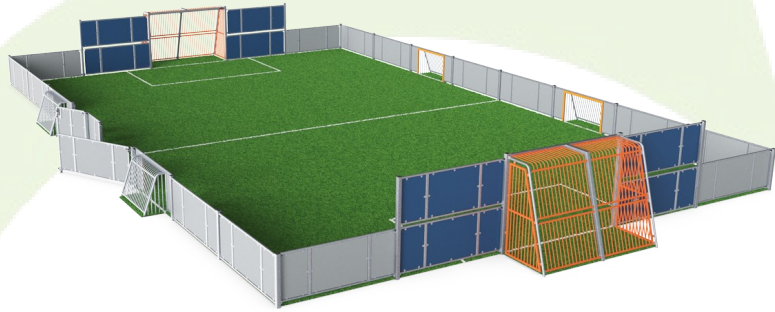


The HDPE panels are connected with M8 stainless steel bolts to 42.5 x 40 x 3mm welded flanges. These connections are not visible from the inside and create a strong and safe connection.



Sustainability Data

FRE600302



Cradle to Gate A1-A3	Total CO ₂ emission	CO ₂ e/kg	Recycled materials
	kg CO ₂ e	kg CO ₂ e/kg	%
FRE600302-0904	5,034.00	1.90	65.51

The overall framework applied for these factors is the Environmental Product Declaration (EPD), which quantifies "environmental information on the life cycle of a product and enable comparisons between products fulfilling the same function" (ISO, 2006). This follows the structure and applies a Life-Cycle Assessment approach to the entire Product stage from raw material through manufacturing (A1-A3))

Kompan A/S
 C.F. Tietgens Boulevard 32C
 DK-5220 Odense SØ
 Denmark



Verification of CO₂ calculation of: Sport



Data version no. 2023-10-05

The CO₂ calculation and data are in compliance with the principles of a carbon footprint impact according to the GHG protocol (Greenhouse Gas Protocol), Scope 3, cradle to gate related to all individual components in the product category: "Sport" represented by item no.: FRE600202-0901.

(Scope 3 emissions include emission sources in the upstream and downstream value chain).

Date: 30. October 2023 | Valid until: 30. October 2025

Verified by:

Julie Marie Vejsgaard Larsen, LCA & EPD Consultant

Verification based on report: Validation of CO₂ calculation of 9 categories of Kompan product line, version 1.0, prepared by: Bureau Veritas HSE, Denmark: Julie M. V. Larsen.

Publication date: 30. October 2023

By Bureau Veritas HSE
 www.bureauveritas.dk
 +45 7731 1000

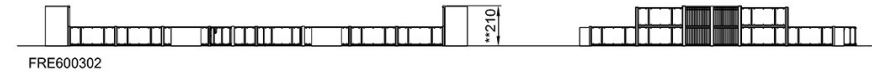
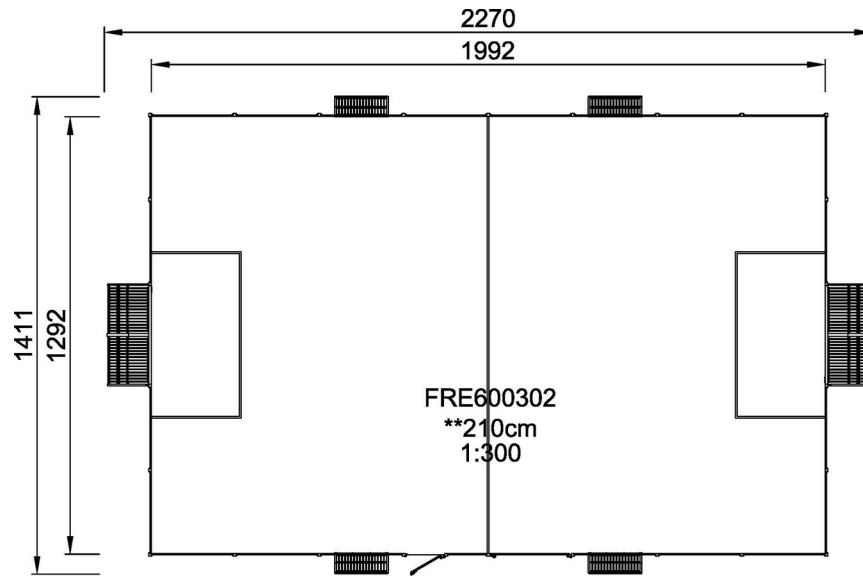


MUGA, 14 x 23m, Low 1m, Plate Design

FRE600302

* Max fall height | ** Total height | *** Safety surfacing area

* Max fall height | ** Total height



[Click to see TOP VIEW](#)

[Click to see SIDE VIEW](#)