

LOOP Circle

TPP29500



Item no. TPP29500-0001

General Product Information

Dimensions LxWxH 5'11"x5'11"x1'4"

Age group

Play capacity (users)

Color options



With its circular form and individual colors, Loop creates a characteristic environment in urban spaces, playgrounds, parks, schools, etc. A Loop will be irresistible for children in schools and other institutions for a break or play.

A Loop can be used indoors + outdoors in

various social and cultural contexts to take an informal rest or movement on, in, and around. Ideal for 4-6 people.

LOOP Circle

TPP29500



The Loops modular elements are made of rotation-molded polyethylene (PE) with a 6-7mm thickness. The Loops are UV-resistant, have excellent impact strength, and are usable within a large temperature span.



The product molds are textured through abrasive blasting, enhancing surface friction and reducing slipperiness, ensuring a safer experience.



The Loops come in 10 standard colors, offering various options to personalize your product and ensure a perfect fit for your intended space.

Item no. TPP29500-0001

Installation Information

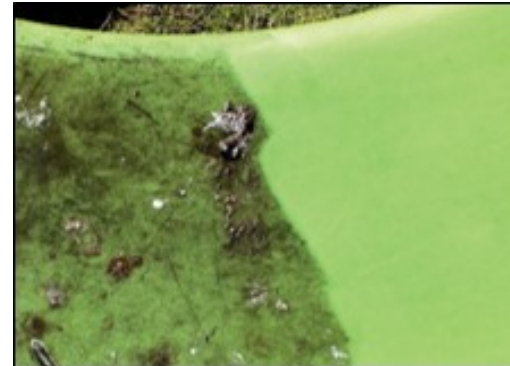
Total installation time	0.0
Excavation volume	0yd ³
Concrete volume	0yd ³
Footing depth (standard)	0'0"
Shipment weight	76lbs
Anchoring options	In-ground ✓ Surface ✓



The Loops are available in a recycled version made from 100% recycled materials. 85% of the plastic is sourced from internal waste and production surplus, while the remaining 15% comes from polyethylene bags. The recycled version comes in an anthracite color.



The Loops can be anchored to the ground by filling them with water or sand using integrated plugs. Alternatively, they can be secured using surface or ground brackets.



This product withstands most cleaning agents and chemicals and can be cleaned using a high-pressure cleaner. The color can be revived using vinyl cleaner or similar.