

Stinger

ELE400020



Item no. ELE400020-01E

General Product Information

Dimensions LxWxH	2'7"x1'3"x2'4"
Age group	2 - 5
Play capacity (users)	1
Color options	



Spring toys like the Stinger make a welcome addition to any playground. Young children enjoy the sheer exuberance of rocking, while the effort required to set the toy in motion (and keep it going) provides excellent gross motor physical exercise. Rocking stimulates the vestibular nerves, promoting balance and spatial skills, and small children learn about

cause and effect as their actions are reflected by the Stinger's springing motions. Rhythmic movement is also a crucial support to learning languages and offers a soothing motion to those who need it.



Stinger

ELE400020



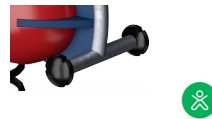
Handhold

Physical: the vertical handgrips ensure a firm grip at different heights, necessary for rocking intensely. This trains hand and arm muscles.



Rocking spring

Physical: response to movement increases spatial awareness and sense of balance. These are fundamental motor skills that help the child's ability to sit still on a chair which takes a good sense of balance. **Cognitive:** trains the understanding of cause and effect: when I move my body, the spring responds with movement.

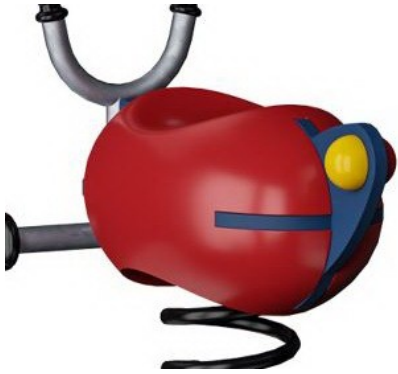


Foot support

Physical: the possibility of footrest supports intense rocking. Rocking stimulates the senses of balance and space that are fundamental in managing the world securely.

Stinger

ELE400020



The seat is made of recyclable PE and molded in one piece with a minimum 5mm wall thickness. PE has high impact resistance across a wide temperature span which ensures vandal resistance in all locations.



KOMPAN Springs are made of high quality spring steel according to EN10270. The springs are cleaned by phosphating before they are painted with an epoxy primer and a polyester powder coating as top finish. The springs are fixed by unique anti pinch fittings for maximum safety and long lifetime.



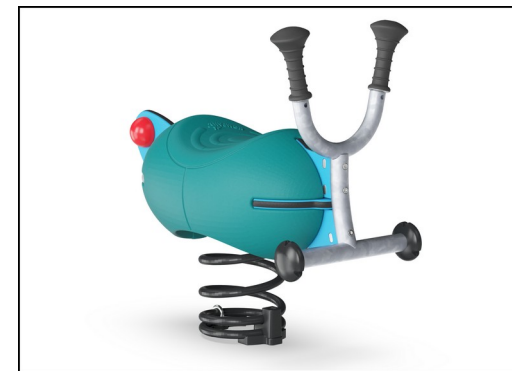
The springs are fixed by unique anti pinch fittings for maximum safety and long lifetime.



Handles are made with a molded PP insert and an outer layer of soft TPV rubber. The handles are attached to the pipe with a galvanized steel inlay to ensure strength and durability.



The steel surfaces are hot-dip galvanized inside and outside with lead-free zinc. The galvanization has excellent corrosion resistance in outside environments and requires minimal maintenance.



KOMPAN GreenLine versions are designed with the most environmentally friendly materials with the lowest possible CO2e emission factor such as EcoCore™ panels of 100% post-consumer recycled ocean waste.

Item no. ELE400020-01E	
Installation Information	
Max. fall height	1'5"
Safety surfacing area	154ft ²
Total installation time	1.9
Excavation volume	0.25yd ³
Concrete volume	0yd ³
Footing depth (standard)	1'6"
Shipment weight	71lbs
Anchoring options	In-ground ✓ Surface ✓
Warranty Information	
Hollow PE Parts	10 Years
Hot dip galvanized steel	Lifetime
Spare Parts Availability	10 Years
Springs	5 Years

Elevated activities 0	Accessible elevated activities	Accessible ground level activities	Accessible ground level play types
Present	0	1	1
Required	0	1	1



Sustainability Data

ELE400020



Cradle to Gate A1-A3	Total CO ₂ emission	CO ₂ e/kg	Recycled materials
	kg CO ₂ e	kg CO ₂ e/kg	%
ELE400020-01E	76.36	2.54	42.07

The overall framework applied for these factors is the Environmental Product Declaration (EPD), which quantifies "environmental information on the life cycle of a product and enable comparisons between products fulfilling the same function" (ISO, 2006). This follows the structure and applies a Life-Cycle Assessment approach to the entire Product stage from raw material through manufacturing (A1-A3))

Kompan A/S
 C.F. Tietgens Boulevard 32C
 DK-5220 Odense SØ
 Denmark



Verification of CO₂ calculation of: Freestanding play equipment



Data version no. 2023-10-05

The CO₂ calculation and data are in compliance with the principles of a carbon footprint impact according to the GHG protocol (Greenhouse Gas Protocol), Scope 3, cradle to gate related to all individual components in the product category: "Freestanding play equipment" represented by item no.: GXY916012-3417.

(Scope 3 emissions include emission sources in the upstream and downstream value chain).

Date: 30. October 2023 | Valid until: 30. October 2025

Verified by:

Julie Marie Vejsgaard Larsen, LCA & EPD Consultant

Verification based on report: Validation of CO₂ calculation of 9 categories of Kompan product line, version 1.0, prepared by: Bureau Veritas HSE, Denmark: Julie M. V. Larsen.

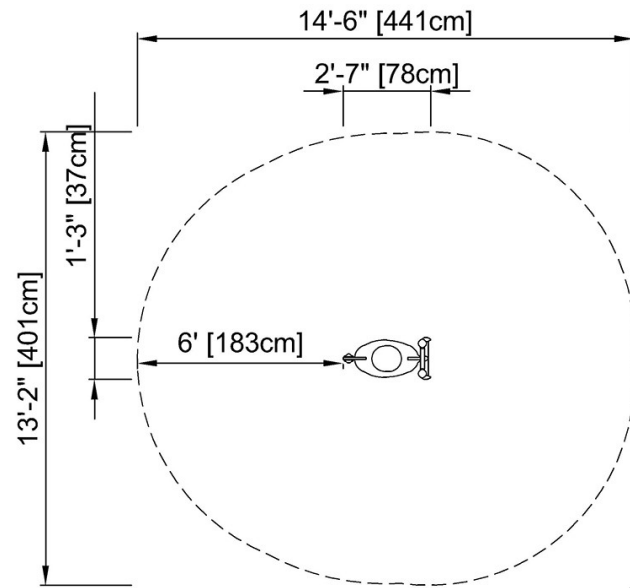
Publication date: 30. October 2023

By Bureau Veritas HSE
 www.bureauveritas.dk
 +45 7731 1000

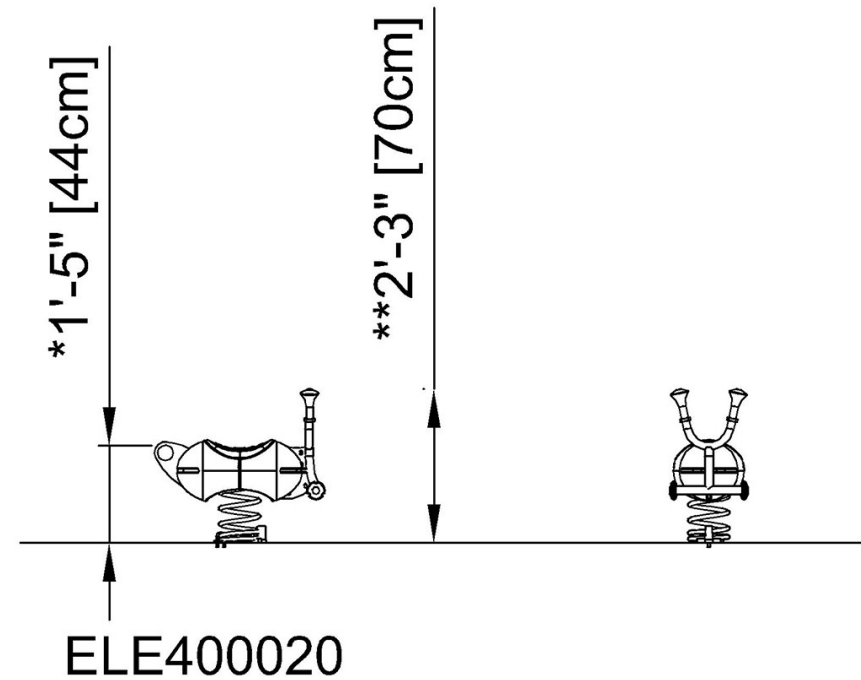


* Max fall height | ** Total height | *** Safety surfacing area

* Max fall height | ** Total height



ELE400020
*1'-5" / 44cm
**2'-3" / 70cm
***154.1ft² / 14.3m²



[Click to see TOP VIEW](#)

[Click to see SIDE VIEW](#)