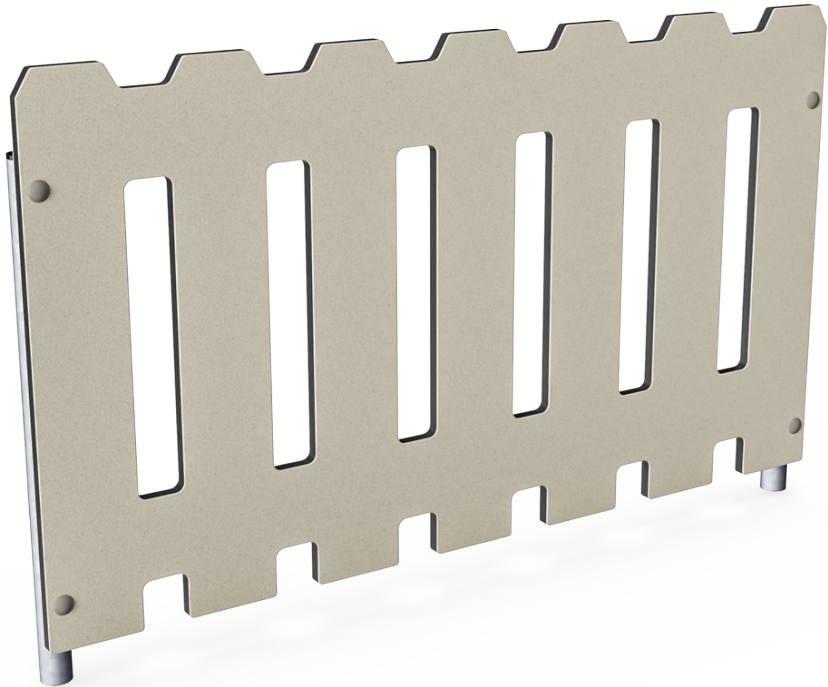

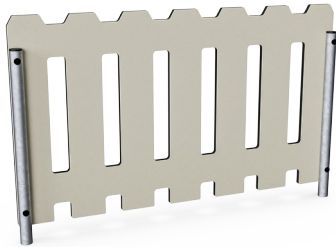


Fence

MSC5404



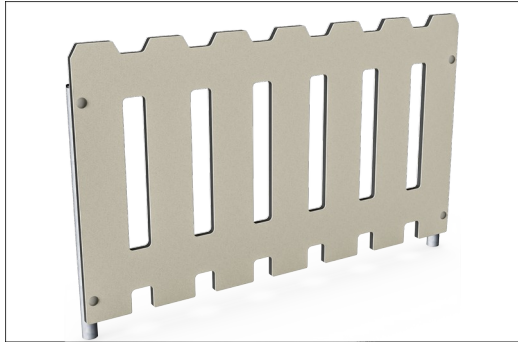
Item no. MSC540400-3417P	
General Product Information	
Dimensions LxWxH	3'9"x0'2"x2'4"
Age group	6m - 4
Play capacity (users)	-
Color options	



Toddlers do need guidance, but are by nature quite independent too. Their curiosity will often tempt them to explore their surroundings looking for great adventures. The Fence can be used to structure the playground, so that the toddler doesn't wander away. Alternatively, it can be used to separate play spaces, which might otherwise be connected.

Fence

MSC5404



Panels of 19mm EcoCore™. EcoCore™ is a highly durable, eco-friendly material, which is not only recyclable after use but also consists of material produced from +95% recycled post-consumer material from food packing waste.



The steel support posts are hot dip galvanized inside and outside with lead free zinc. The galvanization has excellent corrosion resistance in outside environments and requires low maintenance.

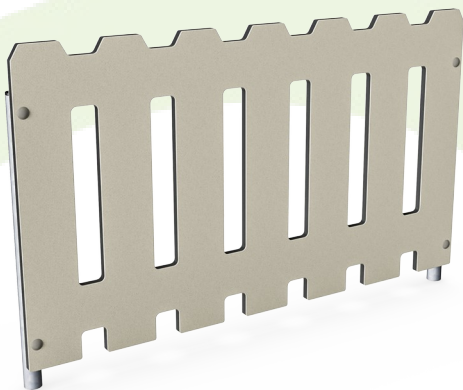
Item no. MSC540400-3417P	
Installation Information	
Max. fall height	0'0"
Safety surfacing area	0ft²
Total installation time	2.2 hours
Excavation volume	0.14yd³
Concrete volume	0yd³
Footing depth (standard)	2'0"
Shipment weight	41lbs
Anchoring options	In-ground ✓ Surface ✓
Warranty Information	
EcoCore HDPE	Lifetime
Hot dip galvanized steel	Lifetime
Spare Parts Availability	10 Years

Elevated activities 0	Accessible elevated activities	Accessible ground level activities	Accessible ground level play types
Present	0	0	0
Required	0	0	0



Sustainability Data

MSC5404



Cradle to Gate A1-A3	Total CO ₂ emission	CO ₂ e/kg	Recycled materials
	kg CO ₂ e	kg CO ₂ e/kg	%
MSC540400-3417P	44.24	2.31	70.12

The overall framework applied for these factors is the Environmental Product Declaration (EPD), which quantifies "environmental information on the life cycle of a product and enable comparisons between products fulfilling the same function" (ISO, 2006). This follows the structure and applies a Life-Cycle Assessment approach to the entire Product stage from raw material through manufacturing (A1-A3))

Kompan A/S
C.F. Tietgens Boulevard 32C
DK-5220 Odense SØ
Denmark



Verification of CO₂ calculation of: Themed play systems



Data version no. 2023-10-05

The CO₂ calculation and data are in compliance with the principles of a carbon footprint impact according to the GHG protocol (Greenhouse Gas Protocol), Scope 3, cradle to gate related to all individual components in the product category: "Themed play systems" represented by item no.: MSC641100-3717P.

(Scope 3 emissions include emission sources in the upstream and downstream value chain).

Date: 30. October 2023 | Valid until: 30. October 2025
Verified by:

Julie Marie Vejsgaard Larsen, LCA & EPD Consultant

Verification based on report: Validation of CO₂ calculation of 9 categories of Kompan product line, version 1.0, prepared by: Bureau Veritas HSE, Denmark: Julie M. V. Larsen.

Publication date: 30. October 2023

By Bureau Veritas HSE
www.bureauveritas.dk
+45 7731 1000

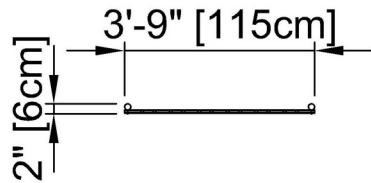


Fence

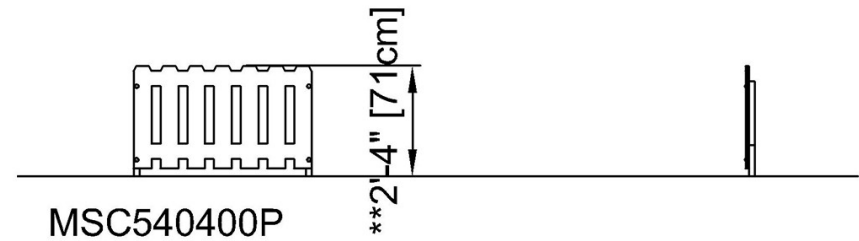
MSC5404

* Max fall height | ** Total height | *** Safety surfacing area

* Max fall height | ** Total height



MSC540400-xx17P
** 2'-4" / 71cm



[Click to see TOP VIEW](#)

[Click to see SIDE VIEW](#)