

# Hangout Tree with Hideaway

PCM52921

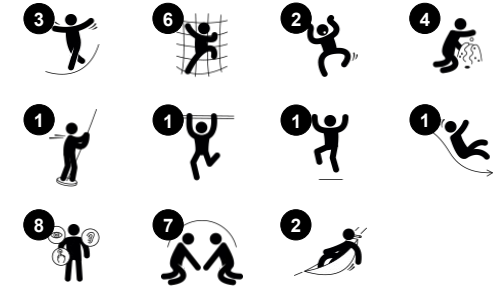
**KOMPAN**  
Let's play



Item no. PCM52921-0901

## General Product Information

Dimensions LxWxH	552x437x451 cm
Age group	6+
Play capacity (users)	21
Color options	



Hangout Tree with Hideaway 는 아이들이 계속해서 놀고 싶어하는 매력적인 놀이 유닛입니다. 아름다운 나무는 재미있는 등반과 사회적 놀이 옵션을 제공합니다. 아이들은 출동봉을 이용하거나 계단이나 클라이밍 월을 통해 플랫폼에 올라갈 수 있습니다. 플랫폼의 높이는 매력적인 놀이 목적지이자 전망대로, 아이들에게 큰 매력을 제공합니다.

등반은 아이들이 좋아하는 놀이 활동으로, 이를 통해 아이들의 좌우 협응력과 근육 발달을 촉진하며, 기본적인 운동 능력을 기를 수 있습니다. 이는 교차 모드 인식과 학습에 긍정적인 영향을 미칩니다. 슬라이딩, 특히 출동봉을 타고 미끄러지는 것은 짜릿한 재미를 제공하며, 아이들의 균형 감각과 공간 인식, 코어 근육을 훈련하는 데

도움이 됩니다. 플랫폼 위와 아래에는 다양한 해먹들이 배치되어 있어 아이들이 사회적으로 교류하고, 등반에서 잠시 휴식을 취할 수 있는 공간을 제공합니다.

# Hangout Tree with Hideaway

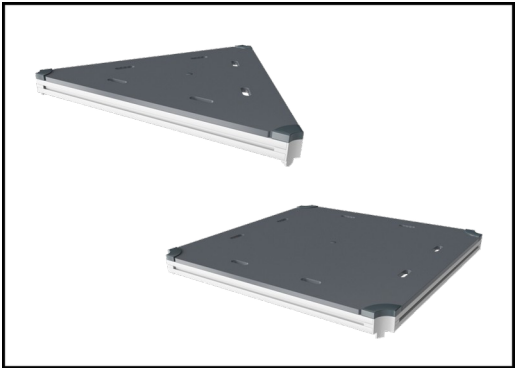
PCM52921



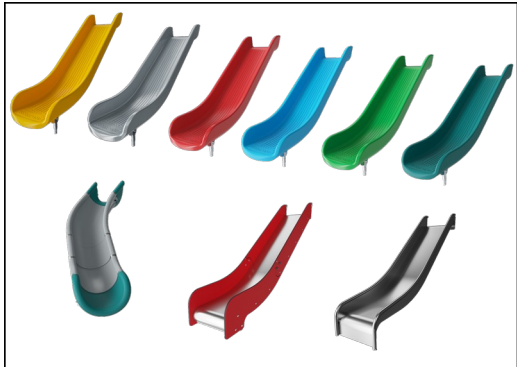
Panels of 19mm EcoCore™. EcoCore™ is a highly durable, eco friendly material, which is not only recyclable after use, but also consists of material produced from +95% recycled post consumer material from food packing waste.



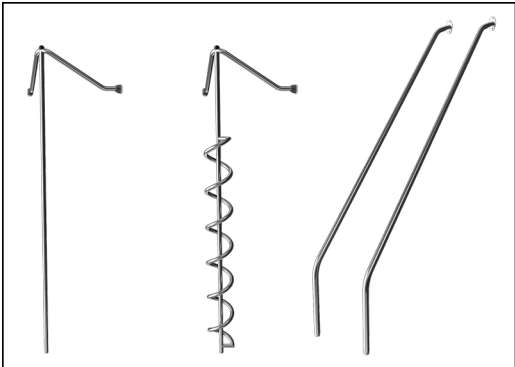
Main posts with hot dip galvanized steel footing are available in different materials: Pre-galvanized inside and outside with powder coated top finish steel posts. Lead free aluminum with color anodized top finish. TexMade posts of 95% post-consumer recycled PE and textile waste.



All decks are supported by unique designed low-carbon aluminum profiles with multiple attachment options. The grey colored molded decks are made of 75% post-consumer waste PP material with a non-skid pattern and texture surface.



The slides can be chosen in six different colors and three materials: Straight or curved one-piece molded PE slides, made from 33% recycled post-consumer materials in different colours. Combined EcoCore™ sides and stainless-steel. Full stainless steel in one piece design for more vandalism proof solutions.



The stainless-steel activities are made of high-quality stainless steel. The steel is cleaned by a total pickling process after manufacturing to ensure a smooth and clean gliding surfaces.



KOMPAN GreenLine versions are designed with ultimate environmentally friendly materials with lowest possible CO2e emission factor. TexMade post, EcoCore™ panels of 95% post-consumer recycled waste and molded PP decks.

Item no. PCM52921-0901	
Installation Information	
Max. fall height	238 cm
Safety surfacing area	42.2 m²
Total installation time	37.4
Excavation volume	0.81 m³
Concrete volume	0.05 m³
Footing depth (standard)	90 cm
Shipment weight	1,485 kg
Anchoring options	Surface ✓ In-ground ✓
Warranty Information	
EcoCore HDPE	Lifetime
Post	10 years
PP Decks	10 years
Spare parts guaranteed	10 years
Stainless steel components	Lifetime

# Sustainability Data

PCM52921



Cradle to Gate A1-A3	Total CO <sub>2</sub> emission	CO <sub>2</sub> e/kg	Recycled materials
	kg CO <sub>2</sub> e	kg CO <sub>2</sub> e/kg	%
PCM52921-0901	1,559.77	1.49	75.27

The overall framework applied for these factors is the Environmental Product Declaration (EPD), which quantifies "environmental information on the life cycle of a product and enable comparisons between products fulfilling the same function" (ISO, 2006). This follows the structure and applies a Life-Cycle Assessment approach to the entire Product stage from raw material through manufacturing (A1-A3))

**KOMPAN**  
Let's play

## Kompan A/S

C.F. Tietgens Boulevard 32C  
DK-5220 Odense SØ  
Denmark



## Verification of CO<sub>2</sub> calculation of: Play systems



Data version no. 2023-10-05

The CO<sub>2</sub> calculation and data are in compliance with the principles of a carbon footprint impact according to the GHG protocol (Greenhouse Gas Protocol), Scope 3, cradle to gate related to all individual components in the product category: "Play systems" represented by item no.: PCM200321-0950.

(Scope 3 emissions include emission sources in the upstream and downstream value chain).

**Date: 30. October 2023 | Valid until: 30. October 2025**

**Verified by:**

Julie Marie Vejsgaard Larsen, LCA & EPD Consultant

Verification based on report: Validation of CO<sub>2</sub> calculation of 9 categories of Kompan product line, version 1.0, prepared by: Bureau Veritas HSE, Denmark: Julie M. V. Larsen.

**Publication date: 30. October 2023**

By Bureau Veritas HSE  
www.bureauveritas.dk  
+45 7731 1000

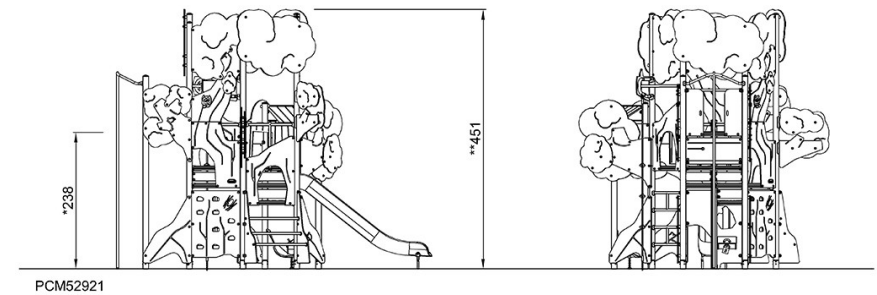
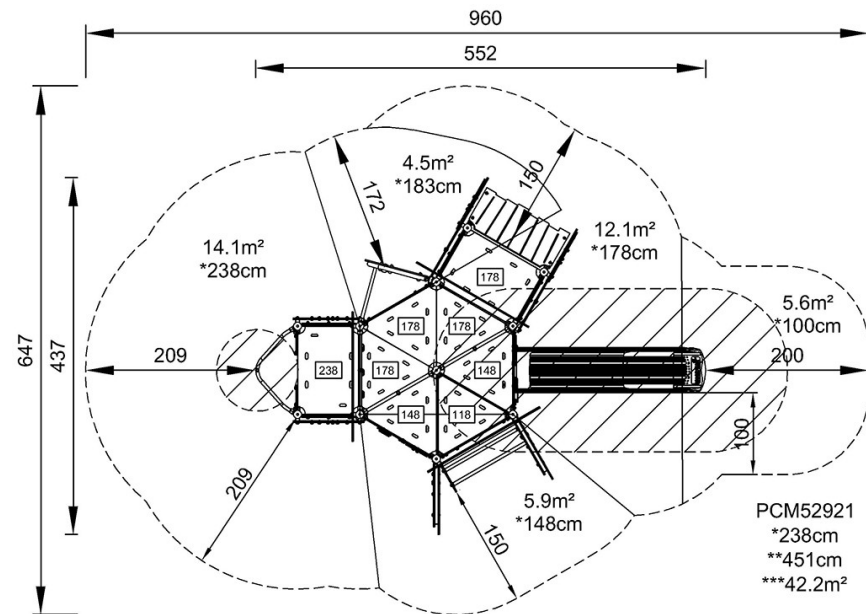


# Hangout Tree with Hideaway

PCM52921

\* Max fall height | \*\* Total height | \*\*\* Safety surfacing area

\* Max fall height | \*\* Total height



[Click to see TOP VIEW](#)

[Click to see SIDE VIEW](#)