

# SkyTwister, Sensory

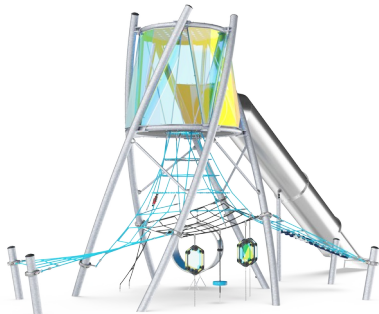
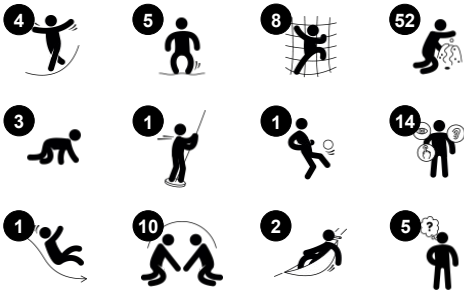
COR29910



Item no. COR299101-0412

### General Product Information

Dimensions LxWxH	631x894x503 cm
Age group	5+
Play capacity (users)	36
Colour options	



The Sky Twister Sensory is an intriguing, novel activity-packed play magnet for children. Novel play activities increase retention, but they also increase play value. The Twisted Tower is an intense place to wonder, feel, move, and make friends. The twisted frame contains a rich variety of puzzling optic effects, climbing, and swaying play heights that attract children. On top awaits an entirely fascinating destination: optic see-through panels change the way the world looks and lights the faces of friends up in varied colours. The top meeting point has bouncy membrane flooring to add sensory

wonders, and a thrilling, high slide to complete the feel. The transparency of the Twisted Tower, from bottom to top, makes it a play unit for intense cooperation, consideration, and communication across levels and activities. On the ground level, inclined nets offer varied climbing, and novel net-rolls add to the play experience with nice, tactile elements for massaging the back or just having fun gliding down the rolls. A swaying, hanging pod is suspended in the nets and invites a break that reflects the movements of the friends climbing the nets above. The optic panels create a

sense of wonder on ground level with their moiré-like visual effects, encouraging logical thinking. Combined with the inclined, horizontal nets, the lower level of the Sky Twister offers an inviting, varied, and responsive meeting point for all. When swaying and climbing in the Sky Twister, children intensely train crucial motor skills and major muscles in a fun way. Motor skills such as cross-coordination and balance build the capability to move confidently and securely through the world. Not least, children get a sensory kick from the sensory play items.



Data is subject to change without prior notice.

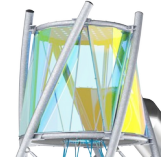
# SkyTwister, Sensory

COR29910



## Tube slide

**Physical:** develops spatial awareness, sense of balance and trains core muscles when sitting upright going down. **Social-Emotional:** thrill when going down fast. Empathy stimulated by turn-taking.



## Twisted dichroic tower top

**Social-Emotional:** the soft, bouncy floored-meeting point placed up high adds a feeling of achievement to meeting friends here. The entry trains turn-taking skills and empathy. **Cognitive:** the hugely appealing dichroic panels make children wonder about how the colors are created and reflected, which supports thinking skills.



## Hangout pod

**Physical:** sitting and lying enjoying the swaying movements stimulate the sense of balance. **Social-Emotional:** meeting, taking a break is invited. Turn-taking supports the skills necessary to learn how to avoid conflicts.



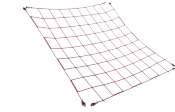
## Dichroic panels

**Physical:** hanging and leaning on the rope-suspended panels train muscles, balance and cross-coordination. **Social-Emotional:** twisting the panels to create colorful shadows encourage turn-taking and cooperation skills. **Cognitive:** wondering about, understanding and explaining the reasons for the color occurrence support logical thinking skills.



## Rollers

**Physical:** the rolling feel adds body pressure when lying and trains the balance when seated. This impacts physical stability. The children can feel the movement of their peers climbing and be part of the play. **Social-Emotional:** the body pressure of the rolls give a soothing, relaxing feel when lying. **Creative:** the rollers' two sidedness and colors makes it possible to change the patterns of the rollers, which stimulates creativity.



## Inclined climbing net

**Physical:** the inclined net supports the upward climbing movement of the body. The net supports cross-body coordination, which impacts coordination of the right and left part of the brain. **Social-Emotional:** the inclination makes climbing feel secure, especially for younger children.

# SkyTwister, Sensory

COR29910



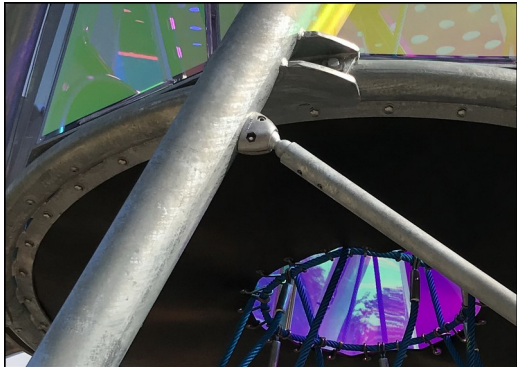
The graphic panels are made of high-quality polycarbonate with a thickness of 6mm. The colour changing dichroic film is glued on the outside. The PC panels are UV stabilized to prevent degradation.



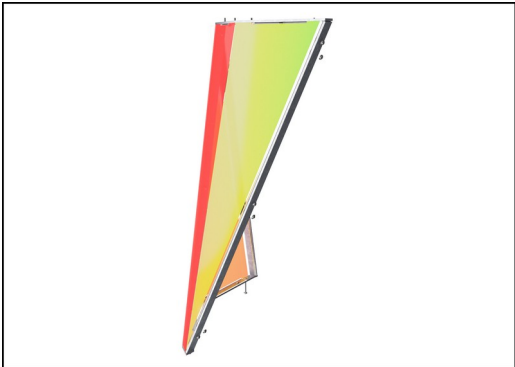
Turnable optic panels of two 7mm thick polycarbonate plates with a distance of 40mm. The inside graphic print consist of an inner image layer and outer transparent protection layer. Both PC panel and the water-based lacquer are UV stabilized to prevent fading of the print.



Hangout pod designed with a welded frame of two steel rings which are hot dip galvanized and powder coated. The membrane consist of friction-proof rubberized material of conveyor belt quality with excellent UV resistance.



The steel surfaces are hot-dip galvanised inside and outside with lead-free zinc. The galvanisation has excellent corrosion resistance in outside environments and requires low maintenance.



Please note: Dichroic film is a reflective material. As the sun moves around a product, there will be reflections to the environment around, which can be quite bright when the sun is at a certain angle. But as the sun moves, so will the reflections.



Corocord ropes of UV-stabilized PES rope strands with inner steel cable reinforcement. The polyester yarn is made from +95% post-consumer materials and is inductively melted onto each strand. PES has high strength with excellent resistance to abrasion and UV radiation. The ropes are connected by stainless steel S-Clamps which are pressed around the rope which results in a durable and vandalism solution.

Item no. COR299101-0412	
Installation Information	
Max. fall height	245 cm
Safety surfacing area	65.6 m²
Total installation time	39.1 hours
Excavation volume	11.14 m³
Concrete volume	4.25 m³
Footing depth (standard)	90 cm
Shipment weight	2,423 kg
Anchoring options	In-ground ✓
Warranty Information	
Galvanised Steel	Lifetime
Painted Toplayer	10 years
Ropes & Nets	10 years
Spare Parts Guarantee	10 years
Stainless Steel Components	Lifetime





# Sustainability Data

COR29910



Cradle to Gate A1-A3	Total CO <sub>2</sub> emission	CO <sub>2</sub> e/kg	Recycled materials
	kg CO <sub>2</sub> e	kg CO <sub>2</sub> e/kg	%
<b>COR299101-0412</b>	6,042.32	3.27	47.68

The overall framework applied for these factors is the Environmental Product Declaration (EPD), which quantifies "environmental information on the life cycle of a product and enable comparisons between products fulfilling the same function" (ISO, 2006). This follows the structure and applies a Life-Cycle Assessment approach to the entire Product stage from raw material through manufacturing (A1-A3))

**KOMPAN**  
Let's play

## Kompan A/S

C.F. Tietgens Boulevard 32C  
DK-5220 Odense SØ  
Denmark



## Verification of CO<sub>2</sub> calculation of: Corocord



Data version no. 2023-10-05

The CO<sub>2</sub> calculation and data are in compliance with the principles of a carbon footprint impact according to the GHG protocol (Greenhouse Gas Protocol), Scope 3, cradle to gate related to all individual components in the product category: "Corocord" represented by item no.: COR314011-1101.

(Scope 3 emissions include emission sources in the upstream and downstream value chain).

**Date: 30. October 2023 | Valid until: 30. October 2025**

**Verified by:**

Julie Marie Vejsgaard Larsen, LCA & EPD Consultant

Verification based on report: Validation of CO<sub>2</sub> calculation of 9 categories of Kompan product line, version 1.0, prepared by: Bureau Veritas HSE, Denmark: Julie M. V. Larsen.

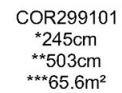
**Publication date: 30. October 2023**

By Bureau Veritas HSE  
www.bureauveritas.dk  
+45 7731 1000



## COR29910

\* Max fall height | \*\* Total height | \*\*\* Safety surfacing area



5 / 07/03/2025

*Data is subject to change without prior notice.*