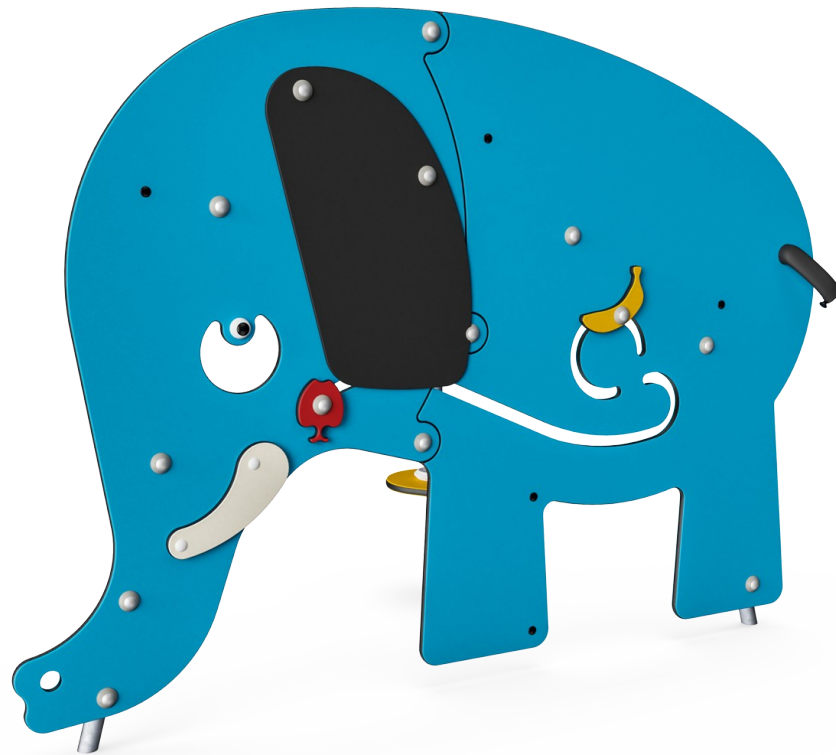
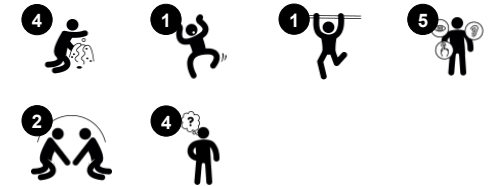


# Elephant

MSC5420



Item no. MSC542000-3417P	
<b>General Product Information</b>	
Dimensions LxWxH	6'2"x2'6"x4'7"
Age group	6m - 4
Play capacity (users)	4
Color options	



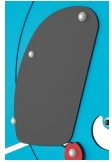
WOW! The Elephant is an iconic playground attraction that invites play and inspires stories. The Elephant is a fun destination that toddlers return to again and again to investigate the playful manipulative items and create new stories: the banana, apples, and pears go from the mouth to the stomach. The Mouse and Elephant story is thrilling to little people.

Storytelling and imagination are important for language development and thinking skills. The tactile variation, with rubber ear and smooth fabric tail adds to the tactile stimulation. The space under the Elephant's tummy and trunk is great for climbing through, training cross-coordination. The holes facilitate peek-a-boo games, too. Peek-a-boo develops the small

child's understanding of object permanence: that people and items still exist even if they are out of sight for a while.

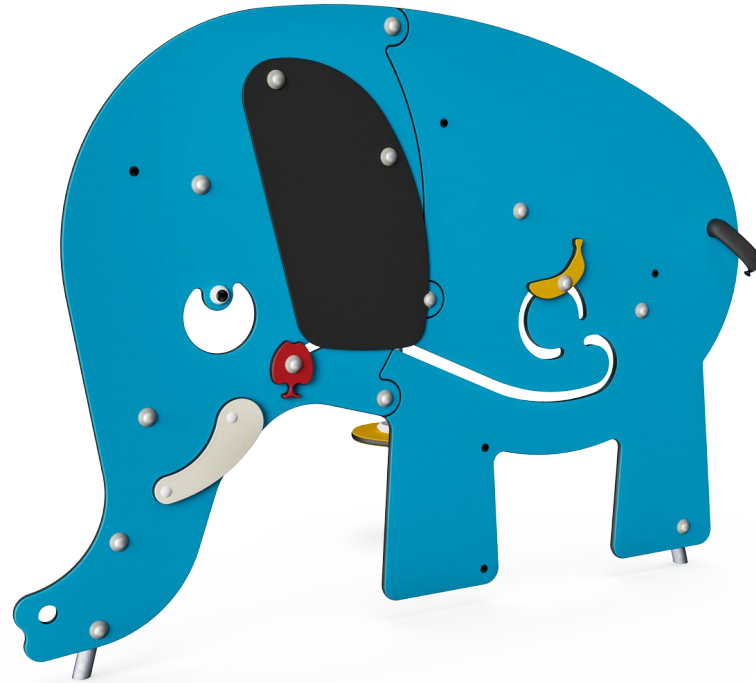
# Elephant

MSC5420



## Ear

**Social-Emotional:** can be played from both sides, encouraging cooperation. **Cognitive:** tactile variation helps children to understand the characteristics of different materials and their uses. cause and effect understanding when bending rubber flaps.



## Table

**Social-Emotional:** fine meeting place and a space creator. Sharing and cooperation create a social scenario that supports communication and cooperation.



## Tail

**Social-Emotional:** cooperation and turn-taking when pulling the tail. **Cognitive:** understanding of object permanence: things can disappear without being gone forever. **Creative:** leaving a mark by placing tail in your preferred position.



## Theme

**Cognitive:** suggests a theme and supports dramatic play, which stimulates language and communication skills.



## Eye

**Social-Emotional:** the eye evokes emotions of empathy, encouraging children to look the animal in the eye.

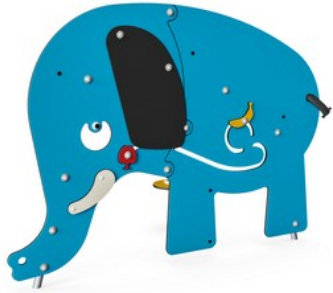


## Play sphere

**Social-Emotional:** can be played from both sides, encouraging cooperation. **Cognitive:** cause and effect understanding. **Creative:** leave a mark and place the spheres at different positions.

# Elephant

MSC5420



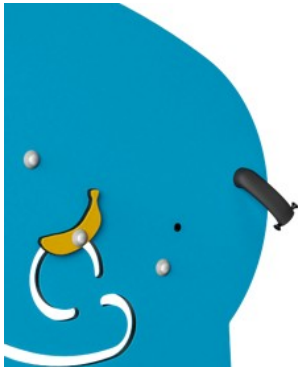
Panels of 19mm EcoCore™. EcoCore™ is a highly durable, eco friendly material, which is not only recyclable after use, but also consists of a core produced from 100% recycled material.



The steel support posts are hot dip galvanized inside and outside with lead free zinc. The galvanization has excellent corrosion resistance in outside environments and requires low maintenance.



Corocord membranes consist of friction-proof rubberized material of conveyor belt quality with excellent UV resistance. Tested and compliant with REACH requirements for PAH. Embedded is a four-layered armoring made of woven polyester. The armoring and the two surface layers result in a total thickness of 7.5 mm.



Tail is made of soft and bendable woven bands. Base material of straps is PP which has good wearing and impact resistance.

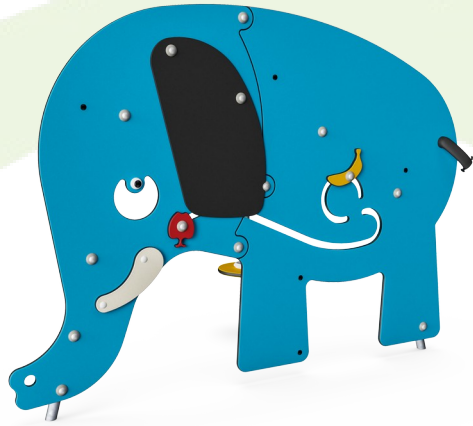
Item no. MSC542000-3417P	
Installation Information	
Max. fall height	0'0"
Safety surfacing area	0ft²
Total installation time	4.2
Excavation volume	0.17yd³
Concrete volume	0yd³
Footing depth (standard)	2'0"
Shipment weight	113lbs
Anchoring options	In-ground ✓ Surface ✓
Warranty Information	
EcoCore HDPE	Lifetime
Hot dip galvanized steel	Lifetime
Membrane	2 Years
Movable parts	2 Years
Spare Parts Availability	10 Years

Elevated activities 0	Accessible elevated activities	Accessible ground level activities	Accessible ground level play types
Present	0	1	1
Required	0	1	1



# Sustainability Data

MSC5420



Cradle to Gate A1-A3	Total CO <sub>2</sub> emission	CO <sub>2</sub> e/kg	Recycled materials
	kg CO <sub>2</sub> e	kg CO <sub>2</sub> e/kg	%
<b>MSC542000-3417P</b>	80.18	1.57	76.01

The overall framework applied for these factors is the Environmental Product Declaration (EPD), which quantifies "environmental information on the life cycle of a product and enable comparisons between products fulfilling the same function" (ISO, 2006). This follows the structure and applies a Life-Cycle Assessment approach to the entire Product stage from raw material through manufacturing (A1-A3))

**Kompan A/S**  
 C.F. Tietgens Boulevard 32C  
 DK-5220 Odense SØ  
 Denmark



## Verification of CO<sub>2</sub> calculation of: Themed play systems



Data version no. 2023-10-05

The CO<sub>2</sub> calculation and data are in compliance with the principles of a carbon footprint impact according to the GHG protocol (Greenhouse Gas Protocol), Scope 3, cradle to gate related to all individual components in the product category: "Themed play systems" represented by item no.: MSC641100-3717P.

(Scope 3 emissions include emission sources in the upstream and downstream value chain).

**Date: 30. October 2023 | Valid until: 30. October 2025**

Verified by:

Julie Marie Vejsgaard Larsen, LCA & EPD Consultant

Verification based on report: Validation of CO<sub>2</sub> calculation of 9 categories of Kompan product line, version 1.0, prepared by: Bureau Veritas HSE, Denmark: Julie M. V. Larsen.

**Publication date: 30. October 2023**

By Bureau Veritas HSE  
 www.bureauveritas.dk  
 +45 7731 1000

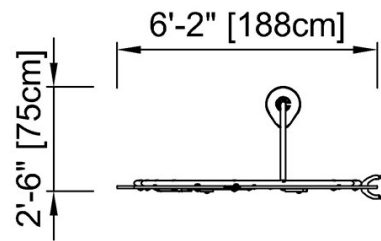


# Elephant

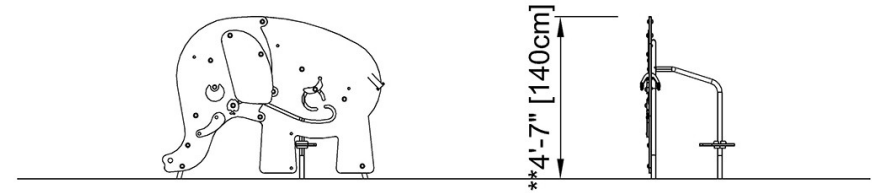
MSC5420

\* Max fall height | \*\* Total height | \*\*\* Safety surfacing area

\* Max fall height | \*\* Total height



MSC542000P  
\*\*4'-7" / 140cm



MSC542000P

[Click to see TOP VIEW](#)

[Click to see SIDE VIEW](#)