

Fence

MSC5404

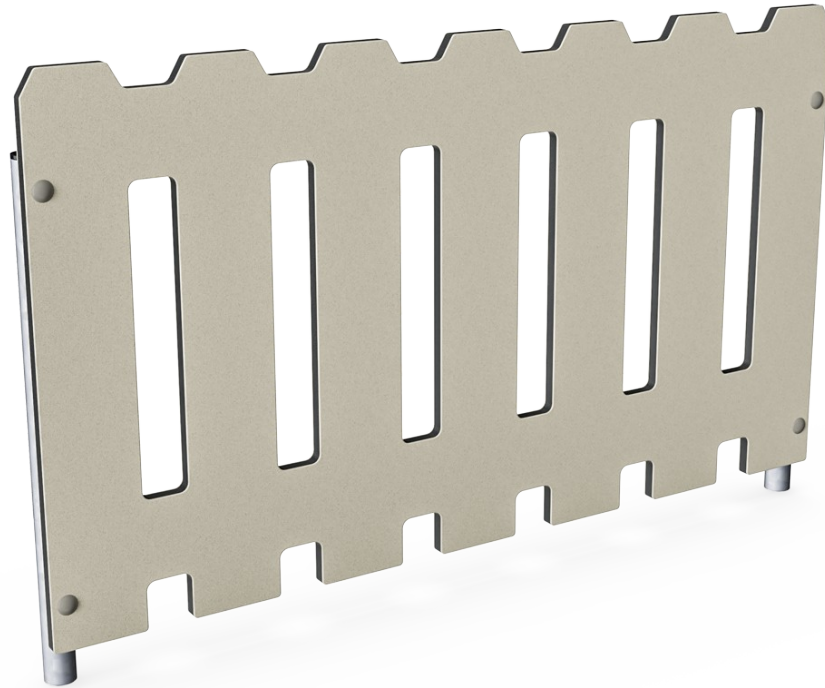

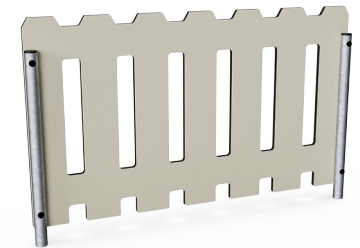


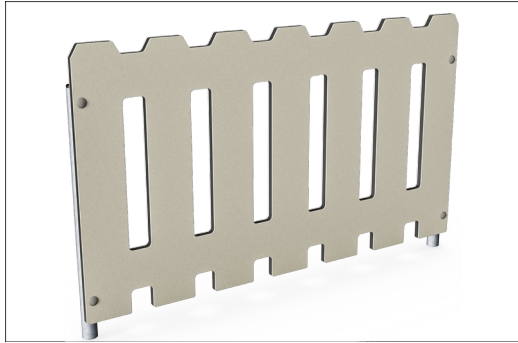
plate with two legs

Item no. MSC540400-3417P	
General Product Information	
Dimensions LxWxH	115x6x71 cm
Age group	6m+
Play capacity (users)	-
Color options	



Fence

MSC5404



Panels of 19mm EcoCore™. EcoCore™ is a highly durable, eco friendly material, which is not only recyclable after use, but also consists of material produced from +95% recycled post consumer material from food packing waste.



The steel support posts are hot dip galvanised inside and outside with lead free zinc. The galvanisation has excellent corrosion resistance in outside environments and requires low maintenance.

Item no. MSC540400-3417P

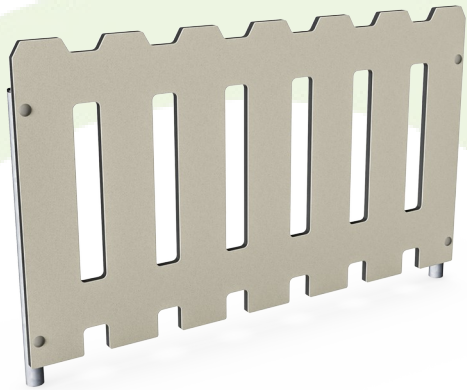
Installation Information

Max. fall height	0 cm
Safety surfacing area	0.0 m ²
Total installation time	2.2
Excavation volume	0.11 m ³
Concrete volume	0.00 m ³
Footing depth (standard)	60 cm
Shipment weight	20 kg
Anchoring options	In-ground ✓ Surface ✓



Sustainability Data

MSC5404



Cradle to Gate A1-A3	Total CO ₂ emission	CO ₂ e/kg	Recycled materials
	kg CO ₂ e	kg CO ₂ e/kg	%
MSC540400-3417P	33.03	1.73	70.12

The overall framework applied for these factors is the Environmental Product Declaration (EPD), which quantifies "environmental information on the life cycle of a product and enable comparisons between products fulfilling the same function" (ISO, 2006). This follows the structure and applies a Life-Cycle Assessment approach to the entire Product stage from raw material through manufacturing (A1-A3))

Kompan A/S
 C.F. Tietgens Boulevard 32C
 DK-5220 Odense SØ
 Denmark



Verification of CO₂ calculation of: Themed play systems



Data version no. 2023-10-05

The CO₂ calculation and data are in compliance with the principles of a carbon footprint impact according to the GHG protocol (Greenhouse Gas Protocol), Scope 3, cradle to gate related to all individual components in the product category: "Themed play systems" represented by item no.: MSC641100-3717P.

(Scope 3 emissions include emission sources in the upstream and downstream value chain).

Date: 30. October 2023 | Valid until: 30. October 2025

Verified by:

Julie Marie Vejsgaard Larsen, LCA & EPD Consultant

Verification based on report: Validation of CO₂ calculation of 9 categories of Kompan product line, version 1.0, prepared by: Bureau Veritas HSE, Denmark: Julie M. V. Larsen.

Publication date: 30. October 2023

By Bureau Veritas HSE
 www.bureauveritas.dk
 +45 7731 1000

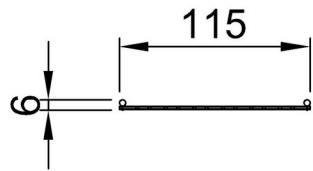


Fence

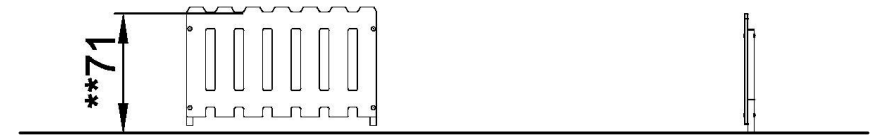
MSC5404

* Max fall height | ** Total height | *** Safety surfacing area

* Max fall height | ** Total height



MSC540400-xx17P
**71cm



MSC540400P
1:100

[Click to see TOP VIEW](#)

[Click to see SIDE VIEW](#)