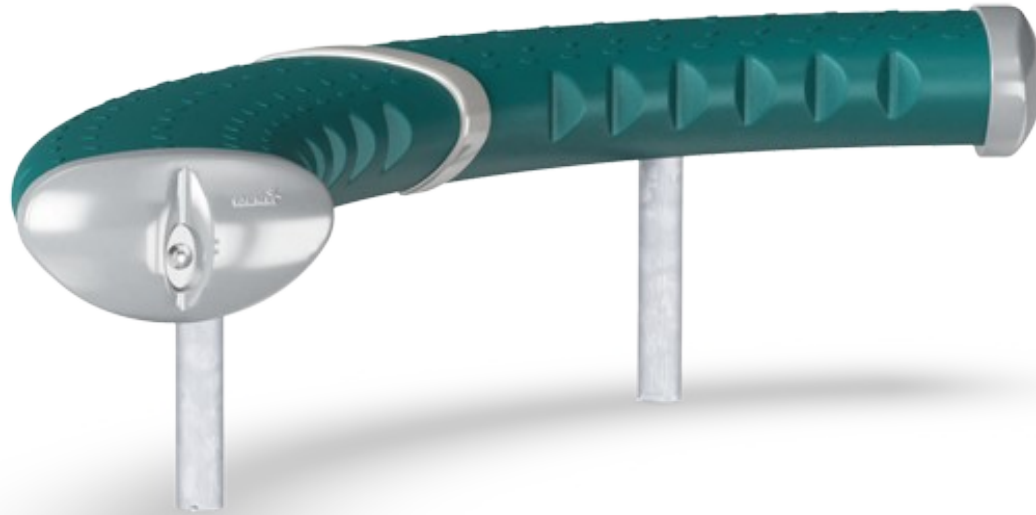

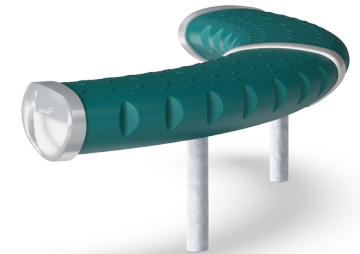


Crescent 40

FRE3010



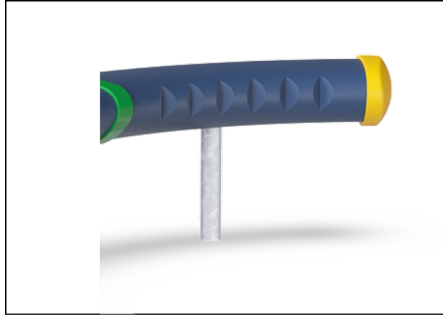
Item no. FRE3010-3417DT	
General Product Information	
Dimensions LxWxH	4'2"x3'7"x1'4"
Age group	3+
Play capacity (users)	-
Color options	



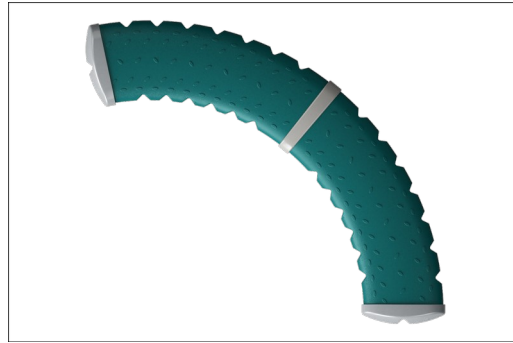
The Crescent is a backless bench with a contemporary architectural style.

Crescent 40

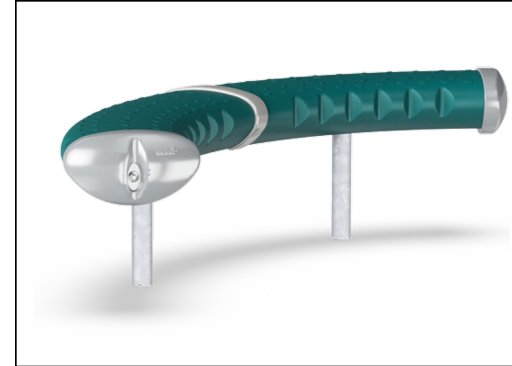
FRE3010



The steel surfaces are hot-dip galvanized inside and outside with lead-free zinc. The galvanization has excellent corrosion resistance in outside environments and requires minimal maintenance.



The significant components are made of 100% recyclable PE made from 33% post-consumer materials. They are molded in one piece with a minimum 5mm wall thickness to ensure high durability in all climates worldwide.



KOMPAN GreenLine versions are designed with the most environmentally friendly materials with the lowest possible CO₂e emission factor such as EcoCore™ panels of 100% post-consumer recycled ocean waste.

Item no. FRE3010-3417DT

Installation Information

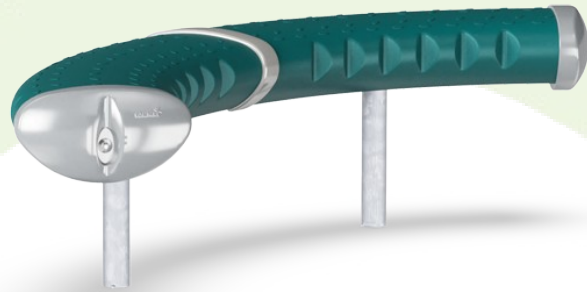
Max. fall height	0'0"
Safety surfacing area	0ft ²
Total installation time	1.9
Excavation volume	0.38yd ³
Concrete volume	0.13yd ³
Footing depth (standard)	2'0"
Shipment weight	63lbs
Anchoring options	In-ground ✓ Surface ✓

Warranty Information

Hollow PE Parts	10 Years
Hot dip galvanized steel	Lifetime
Spare Parts Availability	10 Years

Sustainability Data

FRE3010



Cradle to Gate A1-A3	Total CO ₂ emission	CO ₂ e/kg	Recycled materials
	kg CO ₂ e	kg CO ₂ e/kg	%
FRE3010-3417DT	68.52	2.26	33.69

The overall framework applied for these factors is the Environmental Product Declaration (EPD), which quantifies "environmental information on the life cycle of a product and enable comparisons between products fulfilling the same function" (ISO, 2006). This follows the structure and applies a Life-Cycle Assessment approach to the entire Product stage from raw material through manufacturing (A1-A3))

Kompan A/S
C.F. Tietgens Boulevard 32C
DK-5220 Odense SØ
Denmark



Verification of CO₂ calculation of: Park



Data version no. 2023-10-05

The CO₂ calculation and data are in compliance with the principles of a carbon footprint impact according to the GHG protocol (Greenhouse Gas Protocol), Scope 3, cradle to gate related to all individual components in the product category: "Park" represented by item no.: PAR4070-0001.

(Scope 3 emissions include emission sources in the upstream and downstream value chain).

Date: 30. October 2023 | Valid until: 30. October 2025

Verified by:

Julie Marie Vejsgaard Larsen, LCA & EPD Consultant

Verification based on report: Validation of CO₂ calculation of 9 categories of Kompan product line, version 1.0, prepared by: Bureau Veritas HSE, Denmark: Julie M. V. Larsen.

Publication date: 30. October 2023

By Bureau Veritas HSE
www.bureauveritas.dk
+45 7731 1000

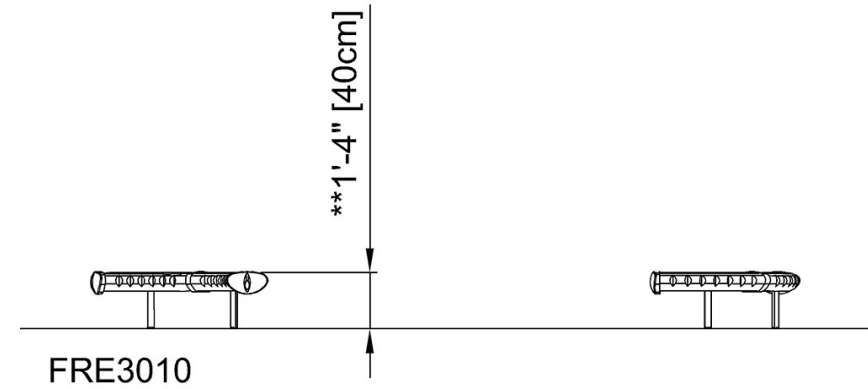
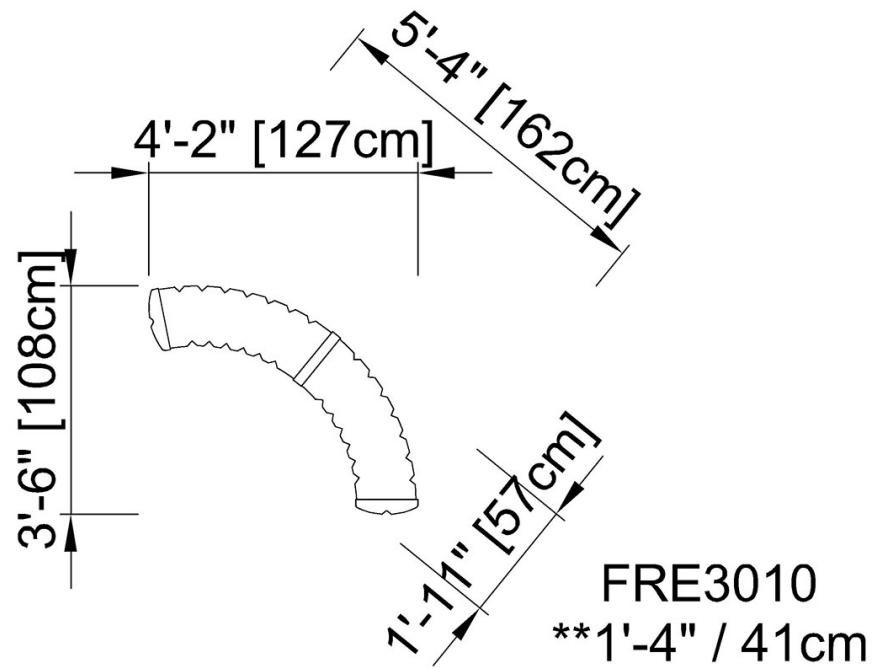


Crescent 40

FRE3010

* Max fall height | ** Total height | *** Safety surfacing area

* Max fall height | ** Total height



[Click to see TOP VIEW](#)

[Click to see SIDE VIEW](#)