

Double Tower with Spider Net

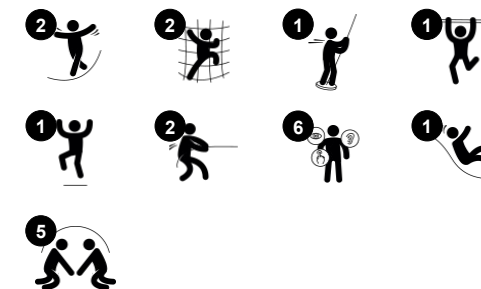
NRO2003



Item no. NRO2003-1021

General Product Information

Dimensions LxWxH	648x652x308 cm
Age group	4+
Play capacity (users)	15
Colour options	



The Double Tower with Spider Net looks fantastic, and is packed with play value. Sliding, climbing and chasing around a large structure like this entertains children for hours. The climbing will also train the muscles and coordination, while the organic-shaped bridge trains balance. With a fall height of just over 2m, it is an excellent mid-range challenge for

those ready to take on the climbing adventures in a playground. It is made from natural Robinia timber, which provides an organic structure that can either blend into or stand out from your surrounds. Children can touch and feel the timber while playing, observing how nature inspiration interacts with the built environment.



Double Tower with Spider Net

NRO2003



Slide

Physical: develops spatial awareness, sense of balance and trains core muscles when sitting upright going down. **Social-Emotional:** empathy stimulated by turn-taking.



Net bridge

Physical: children develop spatial awareness in the open net. **Social-Emotional:** interaction with children outside, socialising. Cooperation and consideration, e.g. when passing others.



Fireman's pole

Physical: supports coordination, arm and core muscles. Landing strengthens bone density. **Social-Emotional:** turn-taking and risk-taking.



Vertical spider net

Physical: supports cross coordination, cooperation of left and right brain half. Strengthens core, arm and leg muscles. **Social-Emotional:** supports social abilities such as cooperation and communication when letting others cross the net.

Double Tower with Spider Net

NRO2003



All organic Robinia products by KOMPAN are made of Robinia wood which is sourced from sustainable plantation farms. On request it can be supplied as FSC® Certified (FSC® C004450).



The paint used for coloured components is water based, which is environmentally friendly and has excellent UV resistance. The paint complies with Australian Standards.



The stainless-steel slides with one-piece slide bed are made of high-quality stainless-steel AISI 304.



Ropes of UV-stabilized PES rope strands with inner steel cable reinforcement. The polyester yarn is made from +95% post-consumer materials and is inductively melted onto each strand.



The hardware is made of stainless steel or galvanised steel to ensure durable connections that has high corrosion resistance.



The Robinia products come in a number of standard colour options. The wood can also be supplied as untreated or with brown painted with a pigment that maintains the wood colour.

Item no. NRO2003-1021

Installation Information

Max. fall height	207 cm
Safety surfacing area	59.5 m ²
Total installation time	22.5
Excavation volume	1.84 m ³
Concrete volume	0.25 m ³
Footing depth (standard)	100 cm
Shipment weight	1,173 kg
Anchoring options	In-ground ✓

Warranty Information

Robinia Wood	15 years
Ropes & Nets	10 years
Spare Parts Guarantee	10 years
Stainless Steel Components	Lifetime
Stainless Steel Components	Lifetime



Sustainability Data

NRO2003



Cradle to Gate A1-A3	Total CO ₂ emission	CO ₂ e/kg	Recycled materials
	kg CO ₂ e	kg CO ₂ e/kg	%
NRO2003-1021	794.63	0.91	9.19

The overall framework applied for these factors is the Environmental Product Declaration (EPD), which quantifies "environmental information on the life cycle of a product and enable comparisons between products fulfilling the same function" (ISO, 2006). This follows the structure and applies a Life-Cycle Assessment approach to the entire Product stage from raw material through manufacturing (A1-A3))

Kompan A/S
 C.F. Tietgens Boulevard 32C
 DK-5220 Odense SØ
 Denmark



Verification of CO₂ calculation of: Nature play



Data version no. 2023-10-05

The CO₂ calculation and data are in compliance with the principles of a carbon footprint impact according to the GHG protocol (Greenhouse Gas Protocol), Scope 3, cradle to gate related to all individual components in the product category: "Nature play" represented by item no.: NRO409-0621.

(Scope 3 emissions include emission sources in the upstream and downstream value chain).

Date: 30. October 2023 | Valid until: 30. October 2025

Verified by:

Julie Marie Vejsgaard Larsen, LCA & EPD Consultant

Verification based on report: Validation of CO₂ calculation of 9 categories of Kompan product line, version 1.0, prepared by: Bureau Veritas HSE, Denmark: Julie M. V. Larsen.

Publication date: 30. October 2023

By Bureau Veritas HSE
 www.bureauveritas.dk
 +45 7731 1000

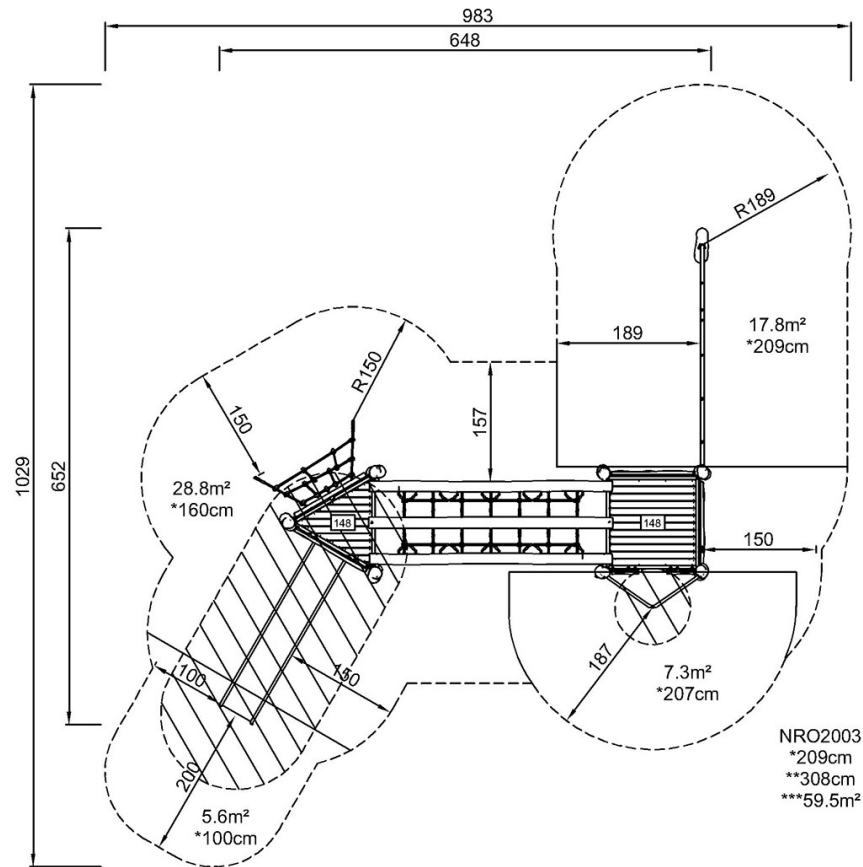


Double Tower with Spider Net

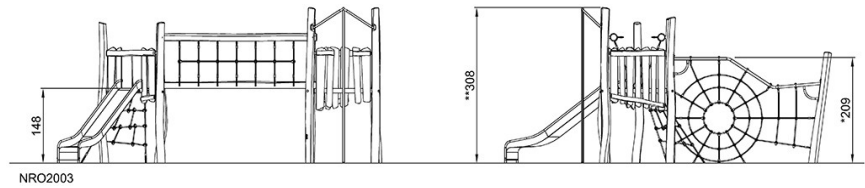
NRO2003

* Max fall height | ** Total height | *** Safety surfacing area

* Max fall height | ** Total height



NRO2003
*209cm
**308cm
***59.5m²



[Click to see TOP VIEW](#)

[Click to see SIDE VIEW](#)