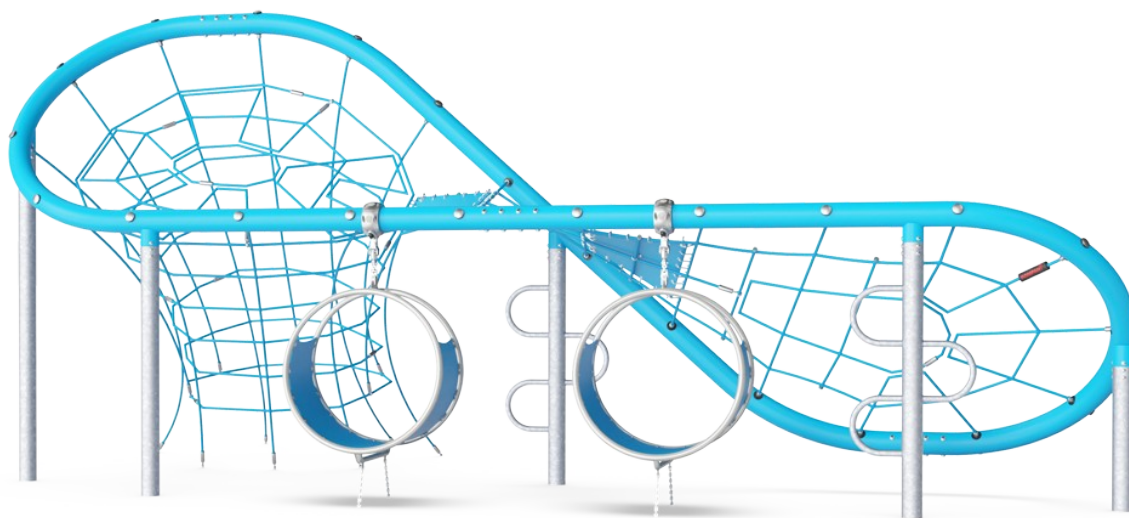


Butterfly, Social

COR17520

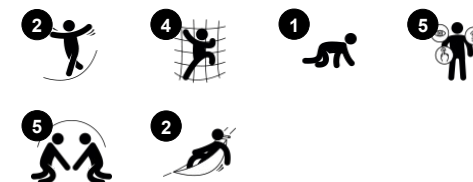
KOMPAN
Let's play



Item no. COR175201-0412

General Product Information

Dimensions LxWxH	687x453x308 cm
Age group	5+
Play capacity (users)	22
Colour options	



The Butterfly is a transparent, social climbing magnet for children. The elegantly curved wings with their twisted climbs invite climbing try-outs again and again. Thanks to the transparency of the Butterfly nets, the children can see each other and communicate across the Butterfly, and from ground level to top. This adds social interaction and a possibility for

cooperation and sharing. The twisted blue membranes on top add a fun, Glide-feel destination for meeting. Climbing the Butterfly trains cross-coordination and balancing techniques, which stimulate the child's ability to control movements, and ultimately to move confidently through the world. The visible heights add thrill. There are faster and slower

ways across and up into the Butterfly: Curved Climbers add fast access to the top frame. On ground level two blue Loops invite fun, swaying meetings, two, four or more together.



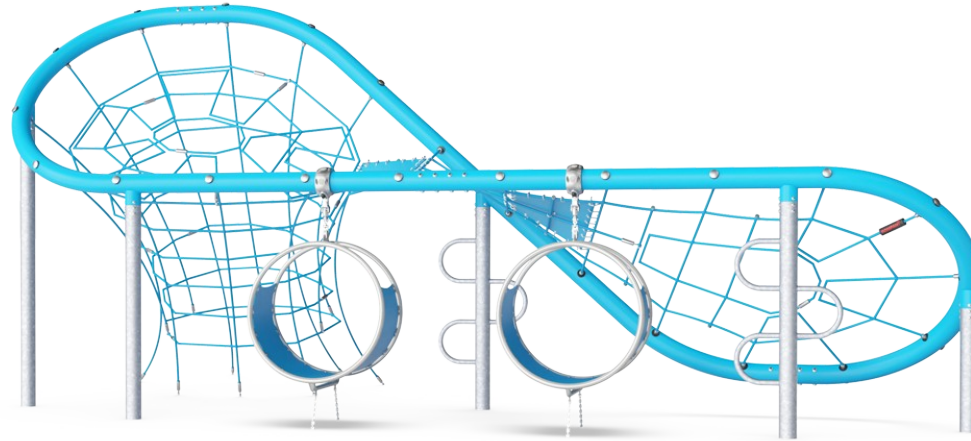
Butterfly, Social

COR17520



Large climbing net

Physical: the connected nets make climbers feel the movements of the other climbers, adding a dimension of fun and demanding concentration. All muscle groups are trained, as well as cross coordination. **Social-Emotional:** room for breaks for many and support cooperation and turn-taking skills.



Climbing pole

Physical: cross coordination and muscle strength are trained. **Social-Emotional:** turn-taking and cooperation.



Hangout pod

Physical: sitting and lying enjoying the swaying movements stimulate the sense of balance. **Social-Emotional:** meeting, taking a break is invited. Turn-taking supports the skills necessary to learn how to avoid conflicts.



Vertical climbing funnel

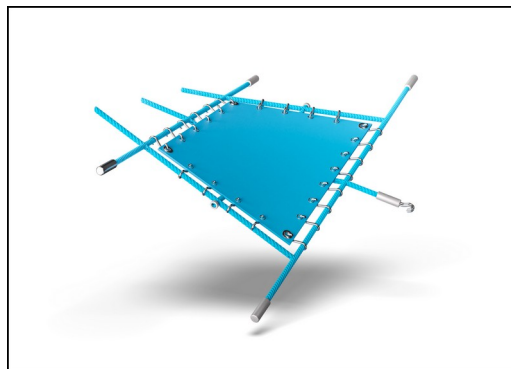
Physical: develops cross coordination and trains major muscles when climbing up or down. **Social-Emotional:** socializing and friendly competition when climbing up and down with friends.

Butterfly, Social

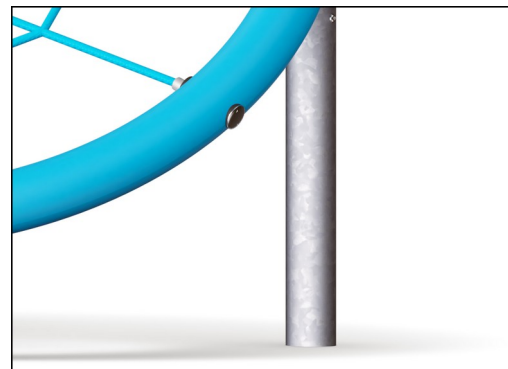
COR17520



Hangout pod designed with a welded frame of two steel rings which are hot dip galvanized and powder coated. The membrane consists of friction-proof rubberized material of conveyor belt quality with excellent UV resistance.



Corocord membranes consist of friction-proof rubberized material of conveyor belt quality with excellent UV resistance. Tested and compliant with REACH requirements for PAH. Embedded is a four-layered armouring made of woven polyester. The armouring and the two surface layers result in a total thickness of 7.5 mm.



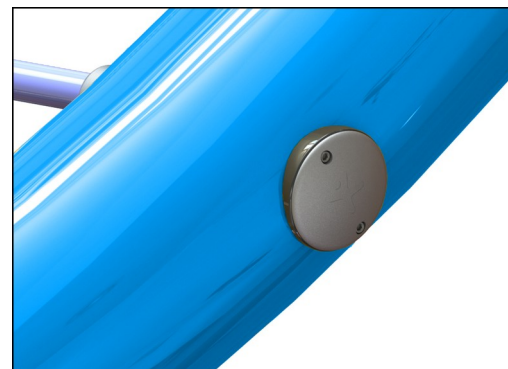
Colored steel components have a base of hot dip galvanization and a powder coated top finish. This provides an ultimate corrosion resistance in all climates around the world. Other steel surfaces are hot dip galvanized inside and outside with lead free zinc.



Ropes of UV-stabilized PES rope strands with inner steel cable reinforcement. The polyester yarn is made from +95% post-consumer materials and is inductively melted onto each strand. The ropes are highly wear- and vandalism-resistant and can be replaced at site if needed.



Corocord 'S' clamps are used as universal connections in Corocord products. 8mm stainless steel rods with rounded edges are pressed around the ropes with a special hydraulic press, making them the ideal connector: safe, durable and vandalism-proof, all while allowing the typical movement of rope play structures.



The rope is fixed to the large steel pipe by a unique KOMPAN designed tightening solution. It consists of inner and outer nylon (PA6) bushings that guide the rope to an outside threaded aluminum part that tightens the rope.

Item no. COR175201-0412

Installation Information

Max. fall height	300 cm
Safety surfacing area	55.5 m ²
Total installation time	22.4
Excavation volume	16.80 m ³
Concrete volume	5.60 m ³
Footing depth (standard)	60 cm
Shipment weight	1,653 kg
Anchoring options	In-ground ✓

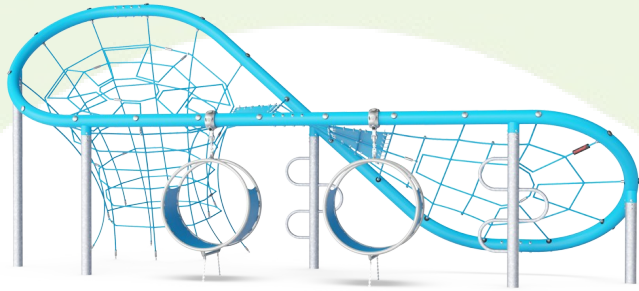
Warranty Information

Hot dip galvanised steel	Lifetime
Painted toplayer	10 years
Ropes & nets	10 years
Spare parts guaranteed	10 years
Stainless steel components	Lifetime



Sustainability Data

COR17520



Cradle to Gate A1-A3	Total CO ₂ emission	CO ₂ e/kg	Recycled materials
	kg CO ₂ e	kg CO ₂ e/kg	%
COR175201-0412	2,990.30	2.77	48.47

The overall framework applied for these factors is the Environmental Product Declaration (EPD), which quantifies "environmental information on the life cycle of a product and enable comparisons between products fulfilling the same function" (ISO, 2006). This follows the structure and applies a Life-Cycle Assessment approach to the entire Product stage from raw material through manufacturing (A1-A3))

KOMPAN
Let's play

Kompan A/S

C.F. Tietgens Boulevard 32C
DK-5220 Odense SØ
Denmark



Verification of CO₂ calculation of: Corocord



Data version no. 2023-10-05

The CO₂ calculation and data are in compliance with the principles of a carbon footprint impact according to the GHG protocol (Greenhouse Gas Protocol), Scope 3, cradle to gate related to all individual components in the product category: "Corocord" represented by item no.: COR314011-1101.

(Scope 3 emissions include emission sources in the upstream and downstream value chain).

Date: 30. October 2023 | Valid until: 30. October 2025

Verified by:

Julie Marie Vejsgaard Larsen, LCA & EPD Consultant

Verification based on report: Validation of CO₂ calculation of 9 categories of Kompan product line, version 1.0, prepared by: Bureau Veritas HSE, Denmark: Julie M. V. Larsen.

Publication date: 30. October 2023

By Bureau Veritas HSE
www.bureauveritas.dk
+45 7731 1000

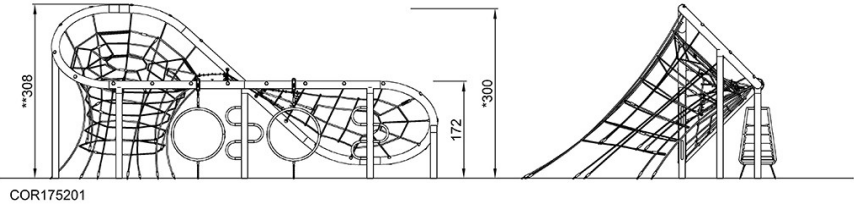
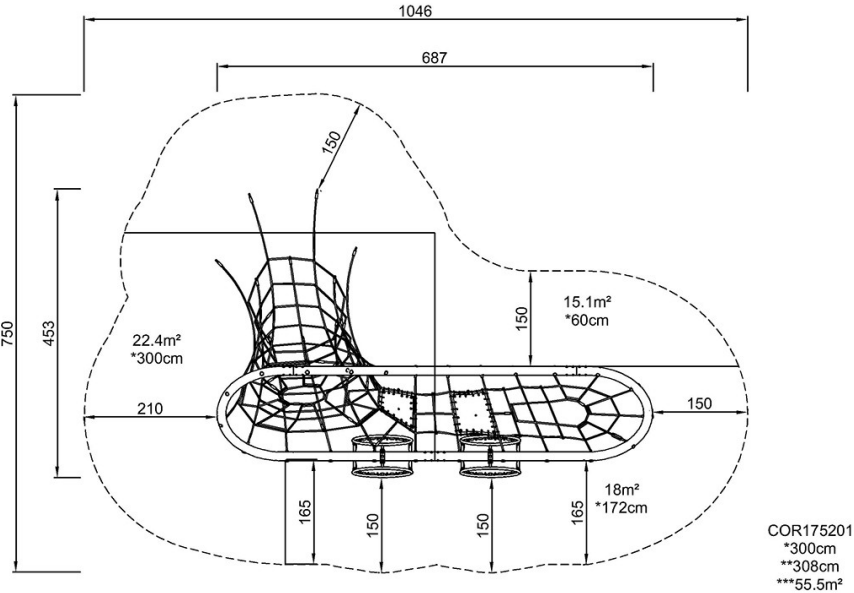


Butterfly, Social

COR17520

* Max fall height | ** Total height | *** Safety surfacing area

* Max fall height | ** Total height



[Click to see TOP VIEW](#)

[Click to see SIDE VIEW](#)